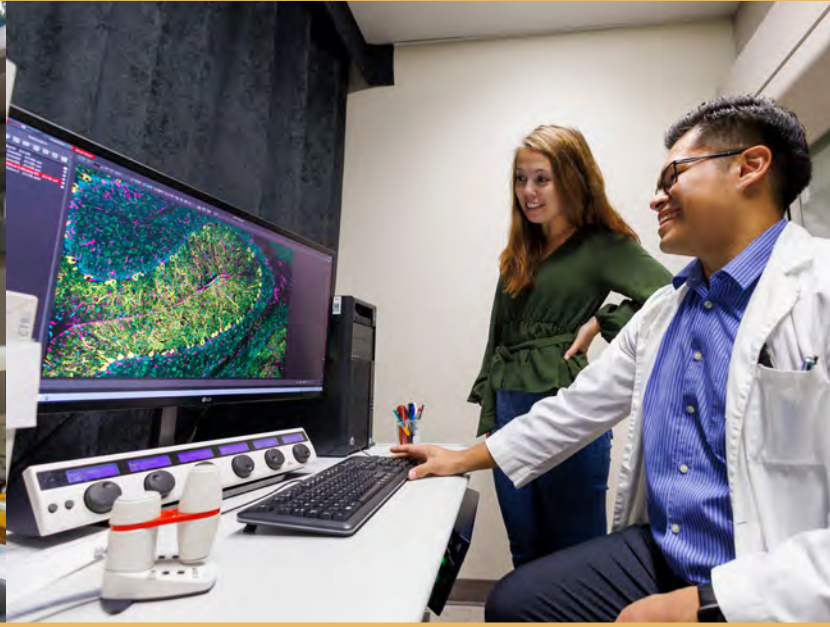
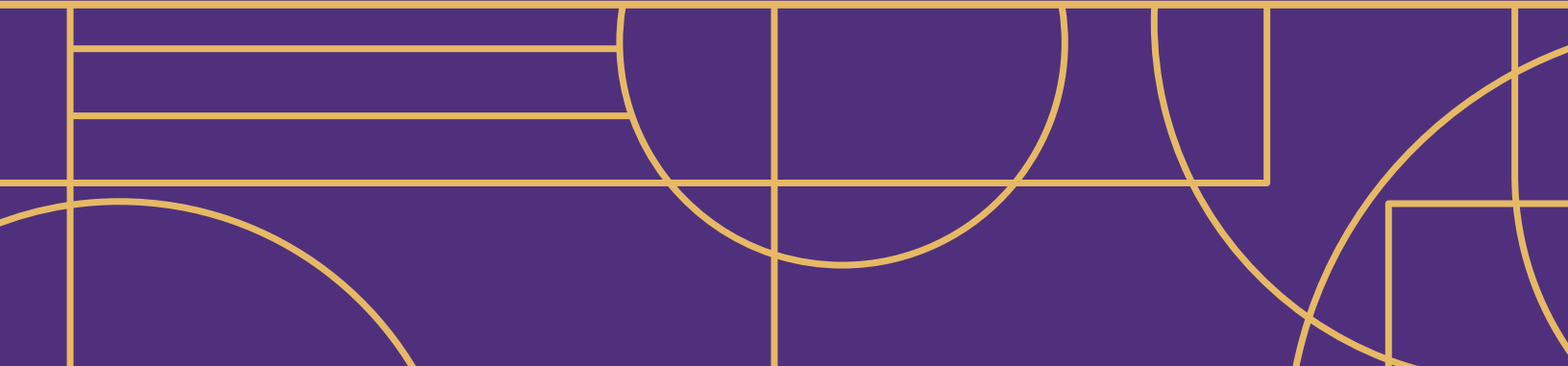


Imagine MORE



SPONSORSHIP OPPORTUNITIES





A NOTE FROM OUR CO-CHAIRS

Dear Friends,

We are writing with a special invitation for you to join us as sponsors of the **2024 Imagine More Dinner** on **Tuesday, June 25, 2024**, at **Discovery World**. Since 2013, this celebrated community event has raised more than \$2 million to reduce the impact of neurological and psychiatric disorders through pioneering research at the Medical College of Wisconsin and Froedtert Hospital.

The Imagine More Dinner inspires all of us to envision a world without the debilitating effects of stroke, Alzheimer's and Parkinson's disease, mental illness and other conditions that impact patients and families. Our support from this event and other philanthropic investments provides the MCW Neuroscience Research Center and the Wisconsin Institute of Neurosciences (WINS), with resources that are driving medical discovery, and ultimately, will translate into innovative patient care.

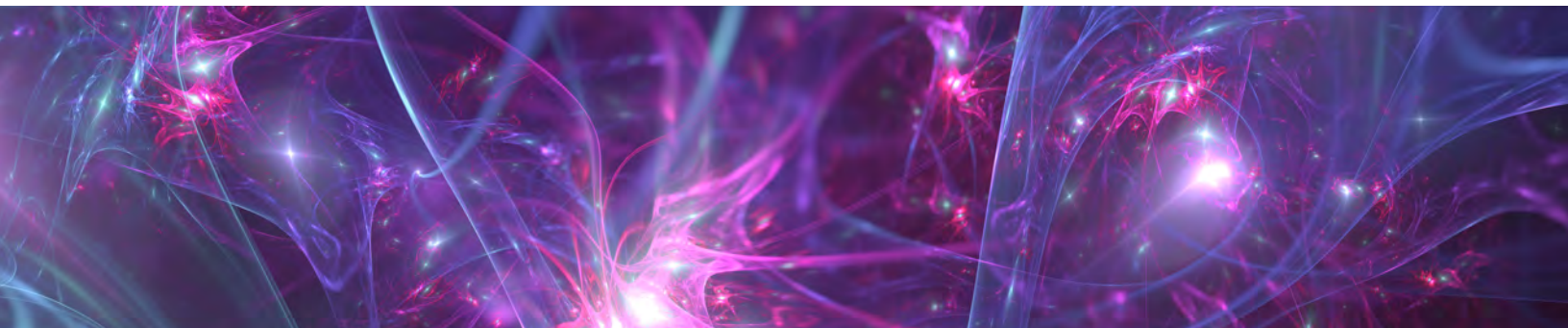
Our 2024 Imagine More event features scientists and clinicians that are at the center of these efforts to find new treatments and cures, including research to reduce the impact of stroke, which will be a focus of this year's event.

The Imagine More Dinner is an outstanding platform for your business or organization to align with Milwaukee's leaders in healthcare innovation and community transformation. Your generosity and participation offer hope to patients and families in our region and across the country.

A list of philanthropic sponsorship opportunities for the evening is enclosed. We appreciate your consideration of a meaningful commitment and would be honored to recognize you among our sponsors for the 2024 Imagine More Dinner. Thank you for your kind consideration and please accept our best regards.

Sincerely,

Ann and Jon Hammes
2024 Imagine More Dinner Co-Chairs



SPONSORSHIP OPPORTUNITIES

"IMAGINE" SPONSOR: \$25,000

Charitable Deduction: \$20,464

- Three reserved tables of eight guests for dinner (twenty four total table guests)*
- VIP table placement
- Opportunity to host keynote speaker at your table (*in lieu of table guest; subject to availability*)
- Verbal sponsor recognition during event program
- One full-page advertisement on inside front cover of online event program
- Logo or name displayed on dedicated scrolling slide during dinner
- Prominent sponsor recognition on Imagine More Dinner event web page

"BELIEVE" SPONSOR: \$20,000

Charitable Deduction: \$16,976

- Two reserved tables of eight guests for dinner (sixteen total table guests)*
- Premier table placement
- Opportunity to host the Imagine More Award or Neuro Hero Recipient at your table (*in lieu of table guest; subject to availability*)
- Verbal sponsor recognition during event program
- One full-page advertisement in online event program
- Logo or name displayed on dedicated scrolling slide during dinner
- Prominent sponsor recognition on Imagine More Dinner event web page

"RESEARCH" SPONSOR: \$15,000

Charitable Deduction: \$13,088

- Two reserved tables of eight guests for dinner (sixteen total table guests)*
- Premier table placement
- Opportunity to host a physician or scientist at your table (*in lieu of table guest; subject to availability*)
- One full-page advertisement in online event program
- Logo or name displayed on dedicated scrolling slide during dinner
- Prominent sponsor recognition on Imagine More Dinner event web page

"DREAM" SPONSOR: \$7,500

Charitable Deduction: \$5,988

- One reserved table of eight guests for dinner (eight total table guests)*
- Preferred table placement
- One half-page advertisement in online event program
- Logo or name displayed on dedicated scrolling slide during dinner
- Sponsor recognition on Imagine More Dinner event web page

"ENVISION" SPONSOR: \$5,000

Charitable Deduction: \$3,488

- One reserved table of eight guests for dinner (eight total table guests)*
- Sponsor recognition in online event program
- Logo or name displayed on shared scrolling slide during dinner
- Sponsor recognition on Imagine More Dinner event web page

TABLE SPONSOR: \$3,200

Charitable Deduction: \$1,688

- One reserved table of eight guests for dinner (eight total table guests)*
- Sponsor recognition on Imagine More Dinner event web page

EVENT DONATIONS

- \$1,000+ will be recognized on the Imagine More Dinner event web page.

CUSTOM SPONSORSHIP OPPORTUNITIES AVAILABLE

To inquire for more details on pricing and customizable sponsorship opportunities, please contact:
Heidi Gempeler Olson | hgempeler@mcw.edu

Custom sponsorships include, but are not limited to: Keynote, Valet, Cocktail Hour, Dessert

*Due to venue space limitations, we are unable to accommodate more than **eight** seats per table.



SPONSORSHIP REGISTRATION

PLEASE COMPLETE THE FORM BELOW TO CONFIRM YOUR CHOSEN SPONSORSHIP

CONTACT INFORMATION:

Company Name

Primary Contact

Contact Email Address

Contact Phone Number

Mailing Address

City/State/Zip Code

Imagine More Dinner SPONSORSHIP LEVELS:

_____ **\$25,000** Imagine Sponsor

_____ **\$20,000** Believe Sponsor

_____ **\$15,000** Research Sponsor

_____ **\$7,500** Dream Sponsor

_____ **\$5,000** Envision Sponsor

_____ **\$3,200** Table Sponsor

DONATION:

\$ _____ **to Neuroscience Research**

PAYMENT INFORMATION:

Donor Advised Funds cannot be used to pay for goods and services.

_____ Please send me an invoice

_____ I have enclosed a check made payable to the "Medical College of Wisconsin"

To pay by credit card, please do so online:
mcwsupport.mcw.edu/imaginemore

If requesting an invoice, this form may be submitted via email to: **hgempeler@mcw.edu**.

Or, mail to: **Heidi Gempeler Olson**
Office of Institutional Advancement
Medical College of Wisconsin, PO Box 26509,
Milwaukee, WI 53226-0509

***DETAILS ABOUT THE IMAGINE MORE DINNER ARE SUBJECT TO CHANGE. PLEASE FOLLOW MCW.EDU/IMAGINEMORE FOR EVENT UPDATES.**

