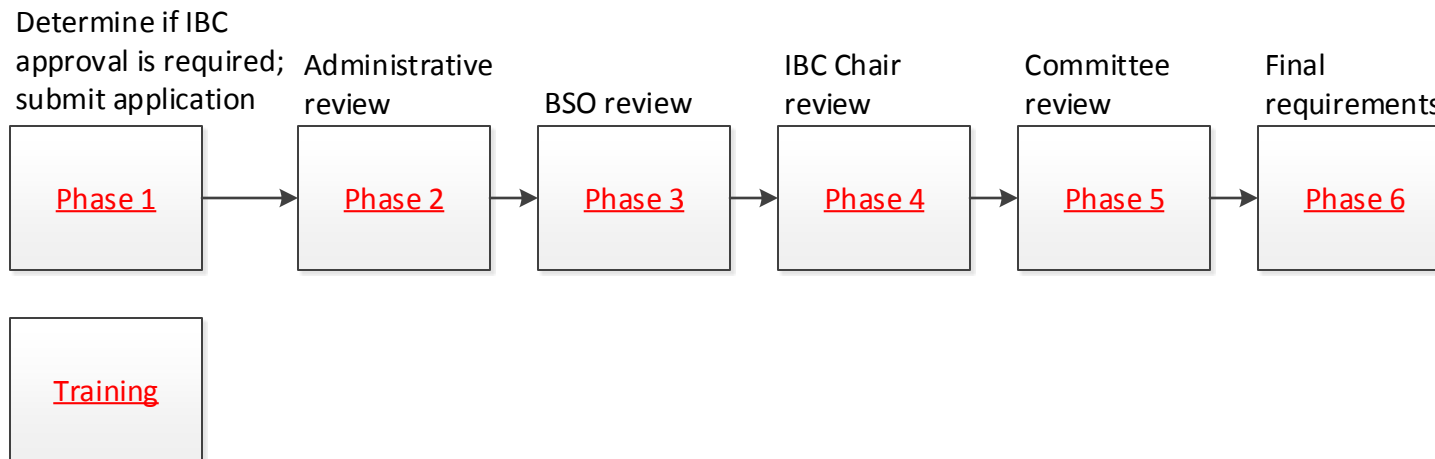


Important Notes

PIs using biologically hazardous or genetically engineered materials must obtain approval from MCW's Institutional Biosafety Committee (IBC). If there is a question whether approval is required, please visit [Working with Biologicals](#) or email IBCSafety@mcw.edu

It is important to schedule a pre-lab visit prior to beginning research by contacting safetyinfo@mcw.edu

Index of Process Maps



USING ANIMALS IN YOUR RESEARCH?

You *must* obtain any safety committee approvals before an animal study can be approved, but you may submit safety committee applications concurrent to animal study applications.

[View animal research approval process here](#)

CONDUCTING HUMAN RESEARCH?

With few exceptions, any safety committee approvals must be obtained before a human study is reviewed for approval.

[View human research approval process here](#)

Glossary

AUA – Animal Use Application

BSO – Biological Safety Officer

Box – MCW web-based repository for shared files

D2L – MCW online education & training system

eBridge – online system for routing approvals

EHS – MCW department of Environmental Health & Safety

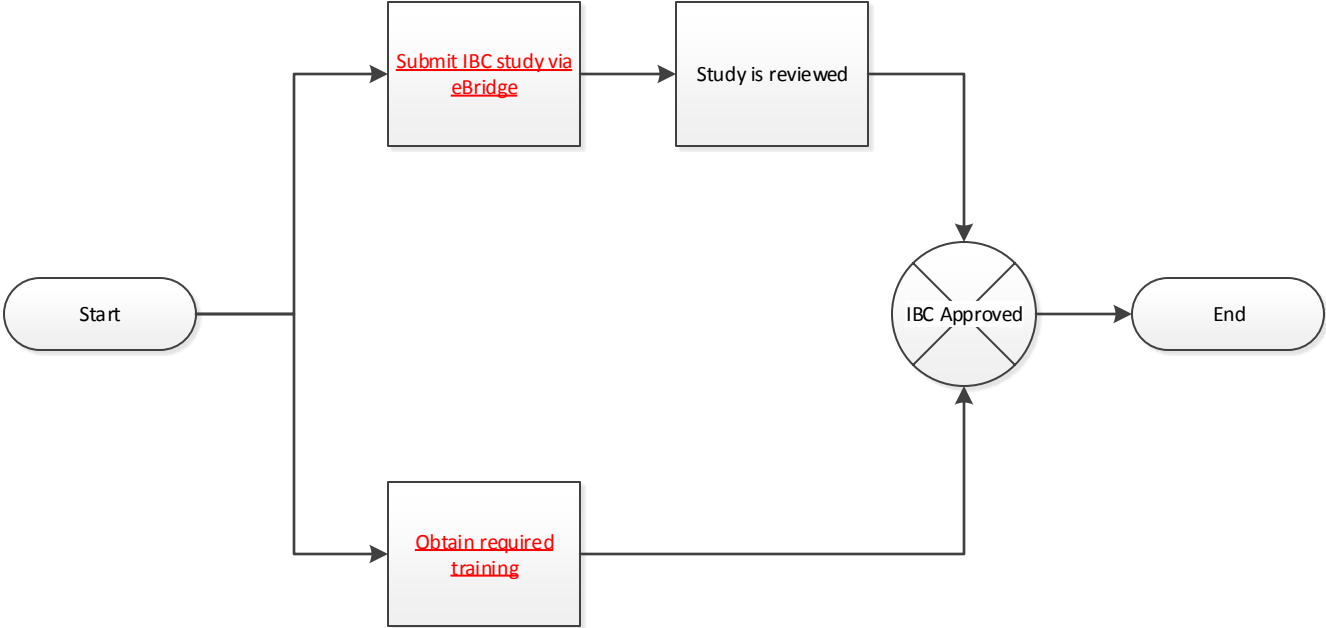
IBC – Institutional Biosafety Committee; also used to refer to biosafety protocol

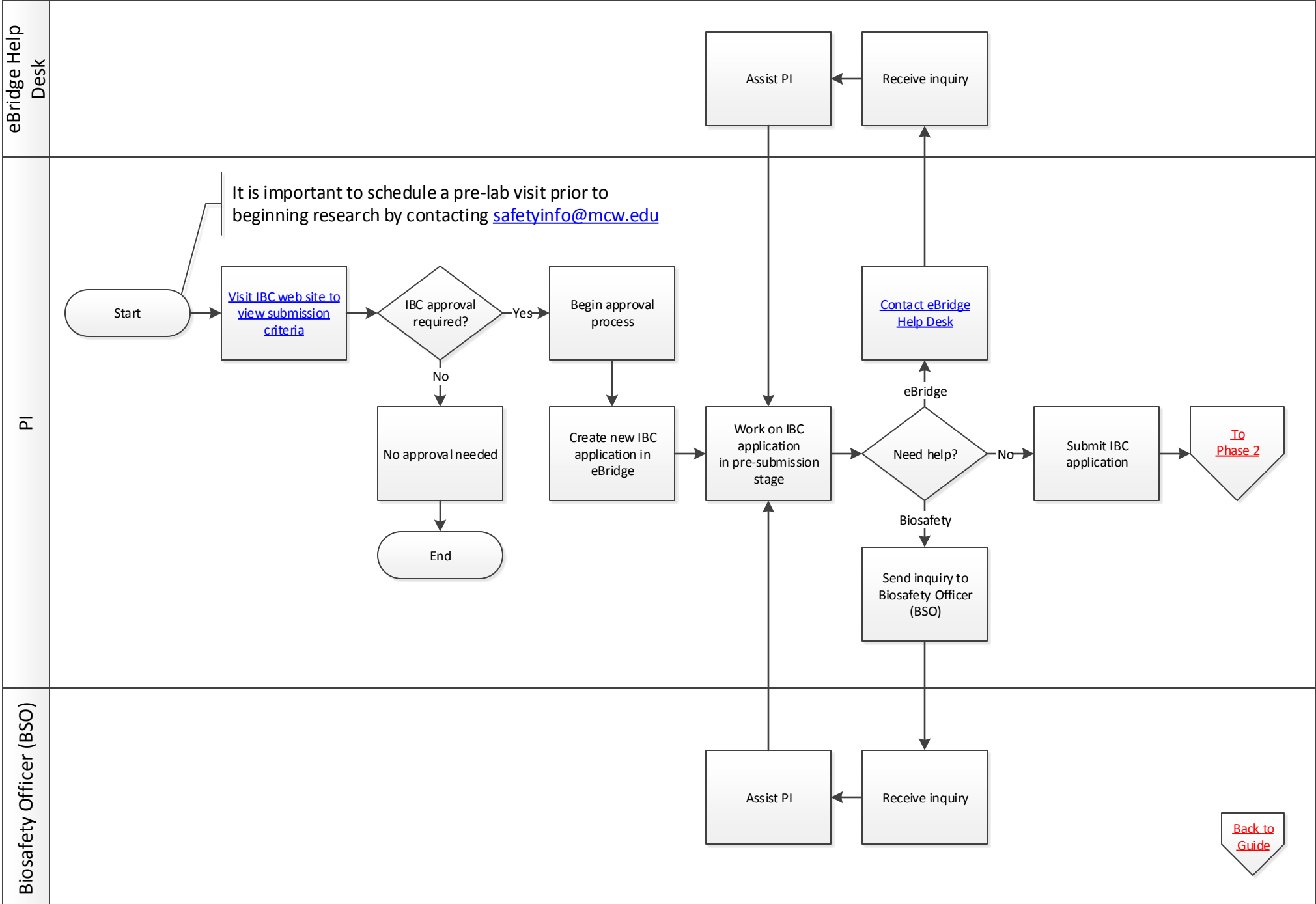
IRB – Institutional Review Board

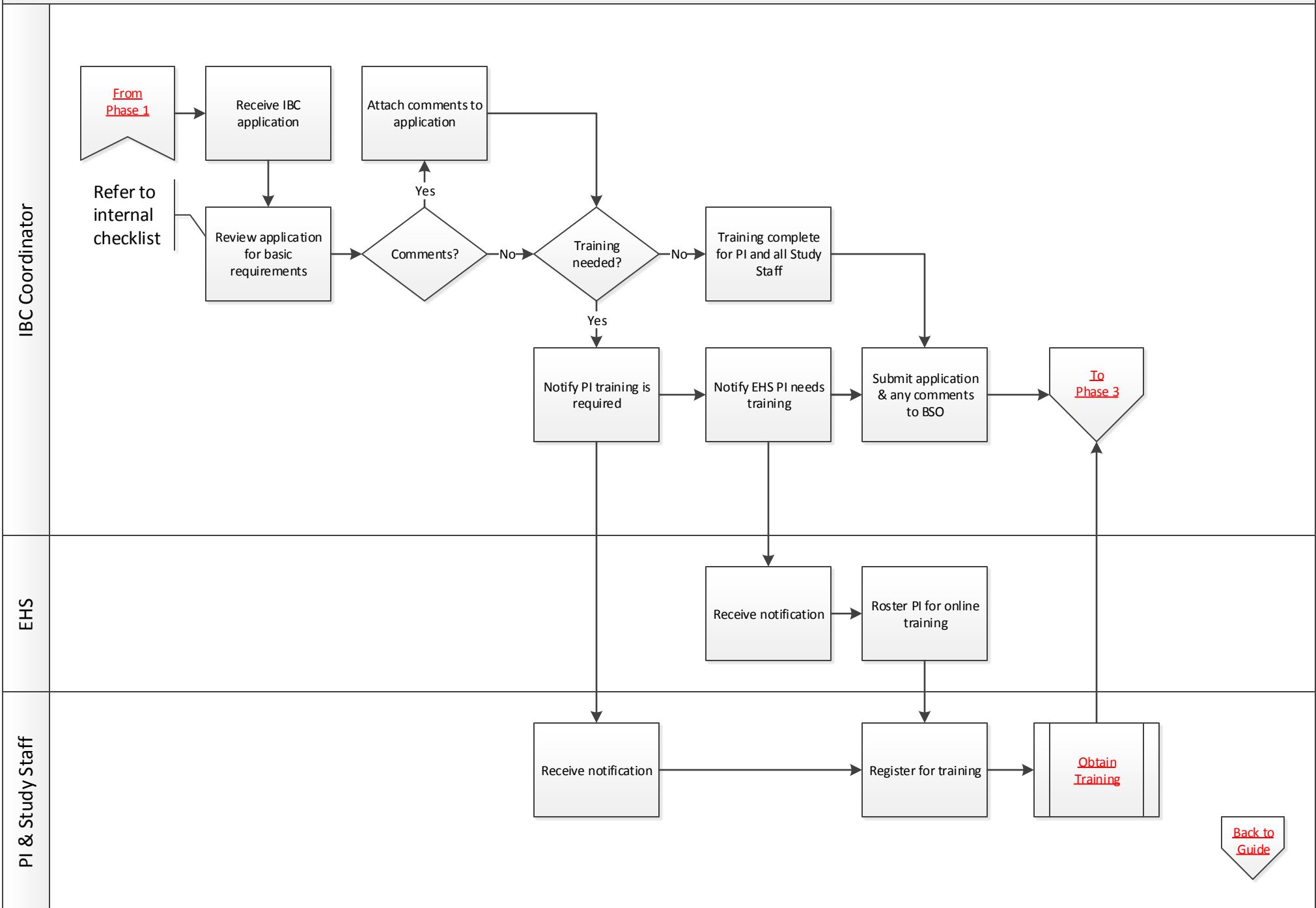
PI – Principal Investigator

PRO – Human subject research protocol







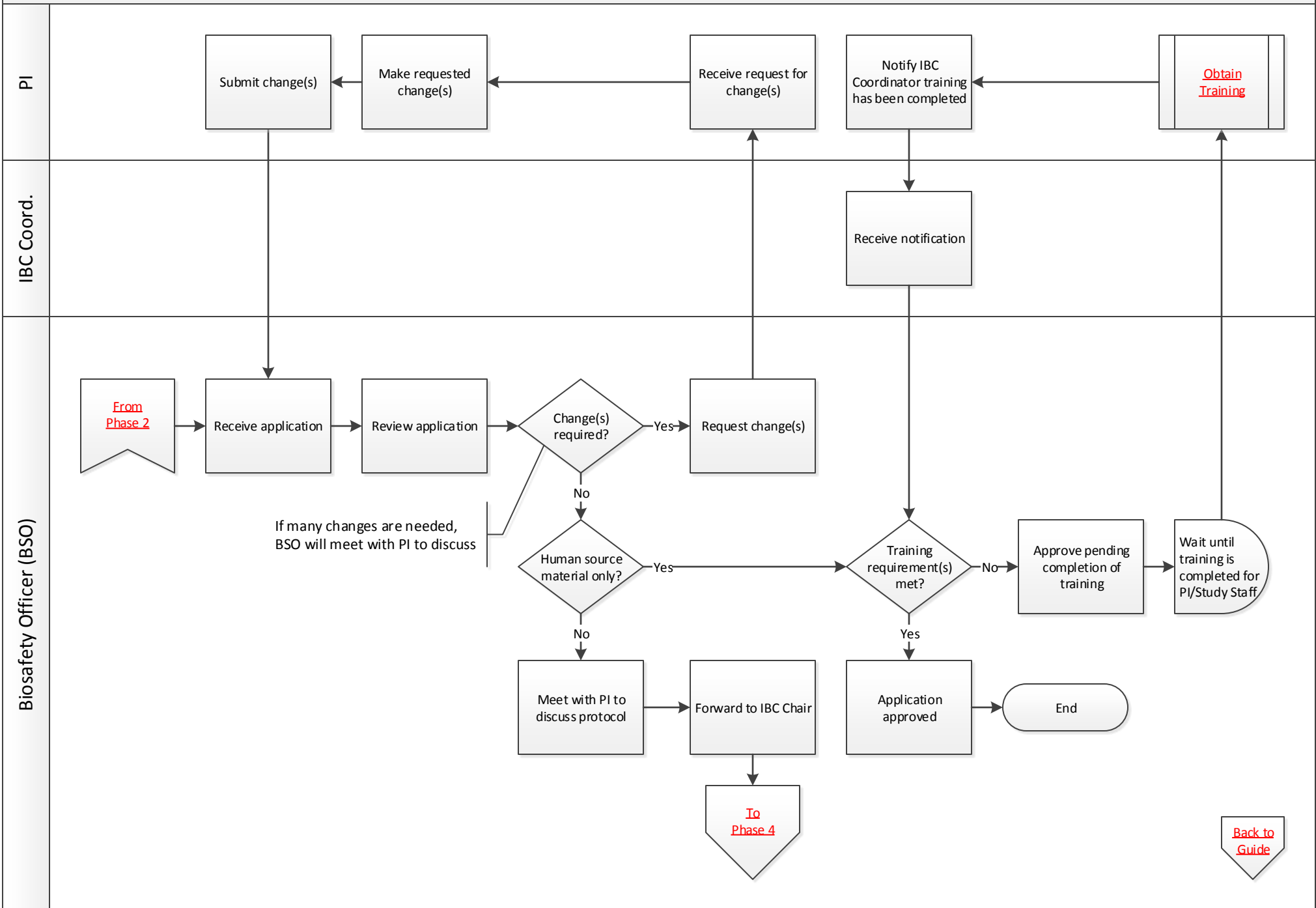


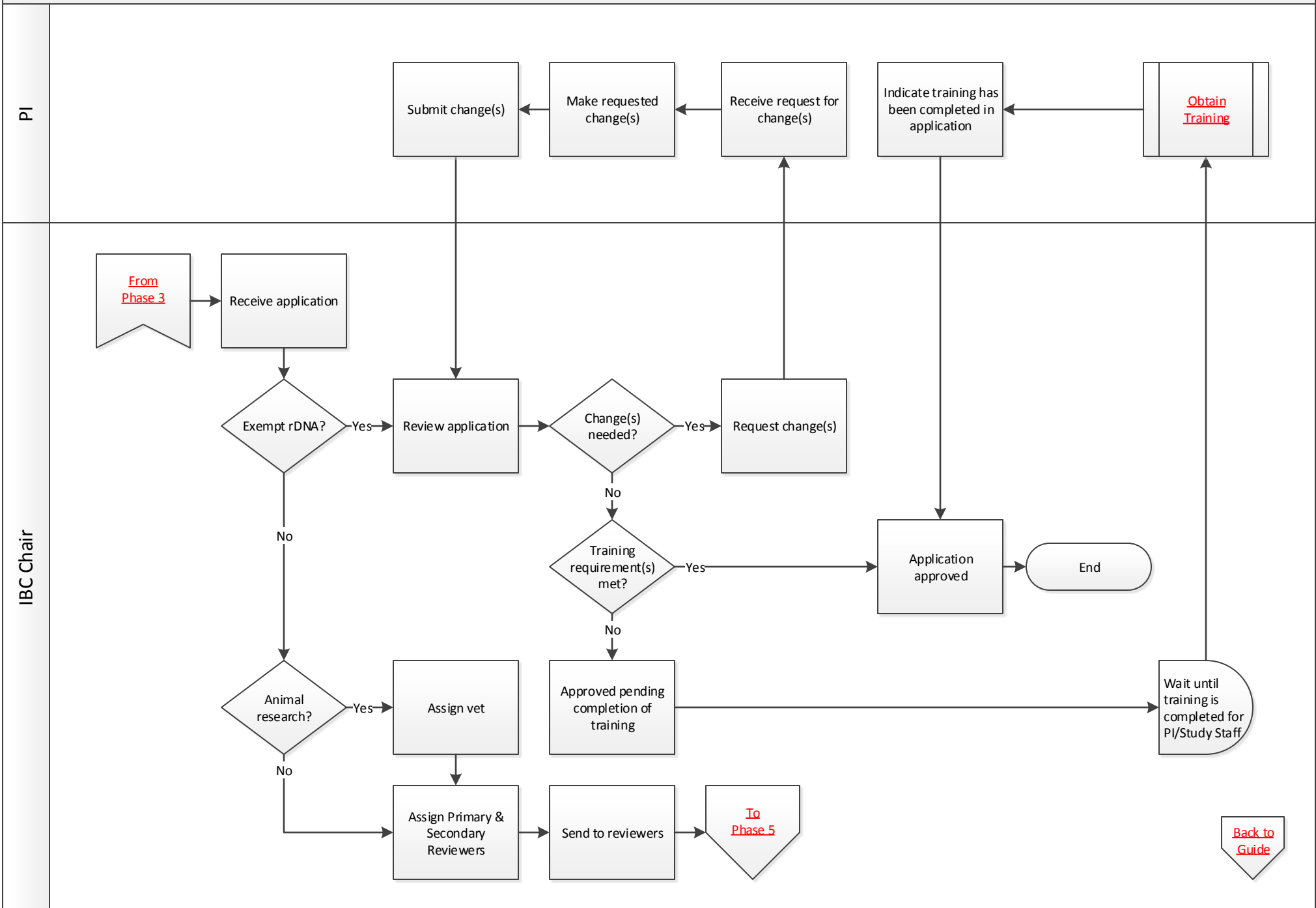
Back to Guide

Biosafety approval process

Phase 3

Revised 9.20.18

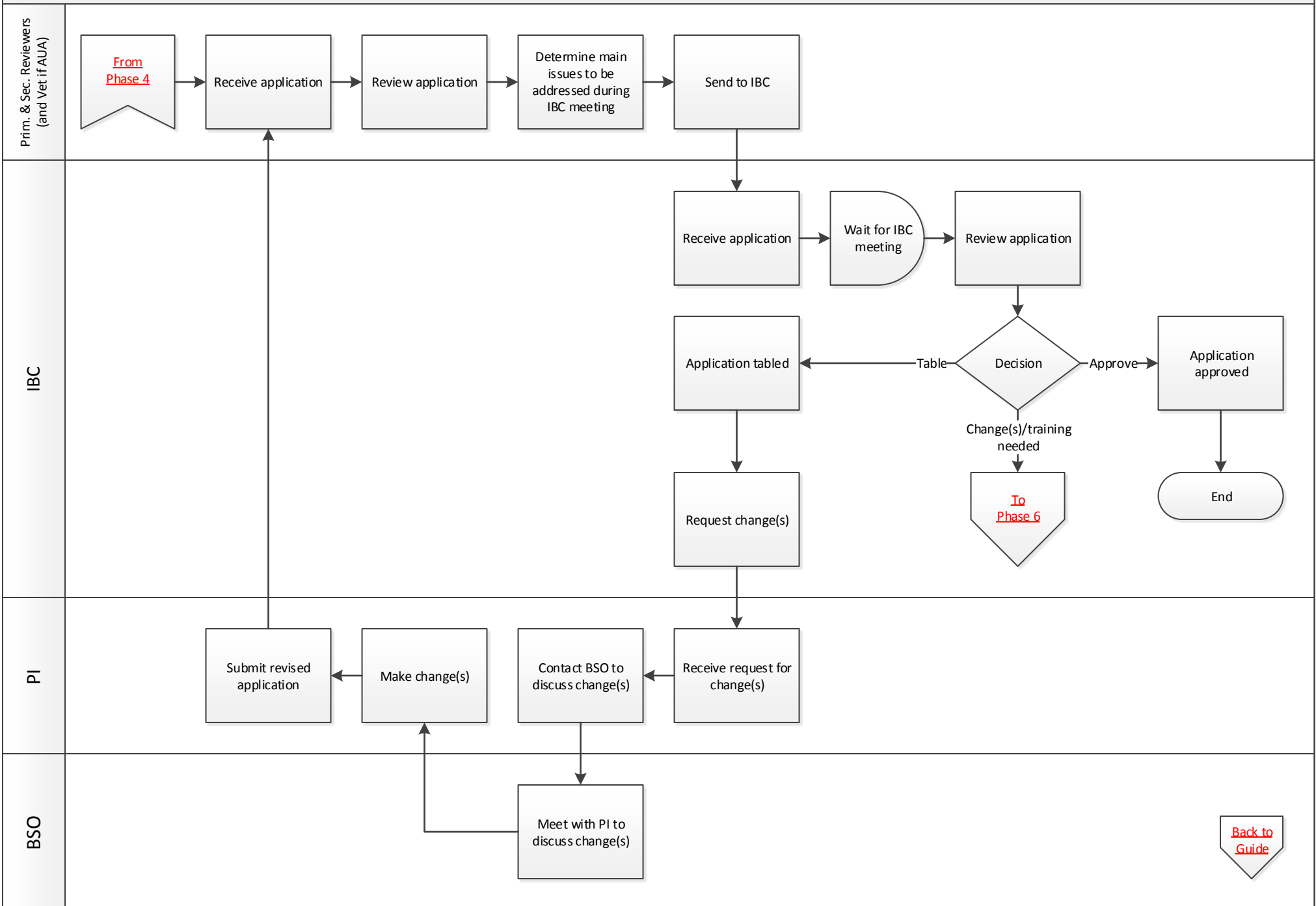


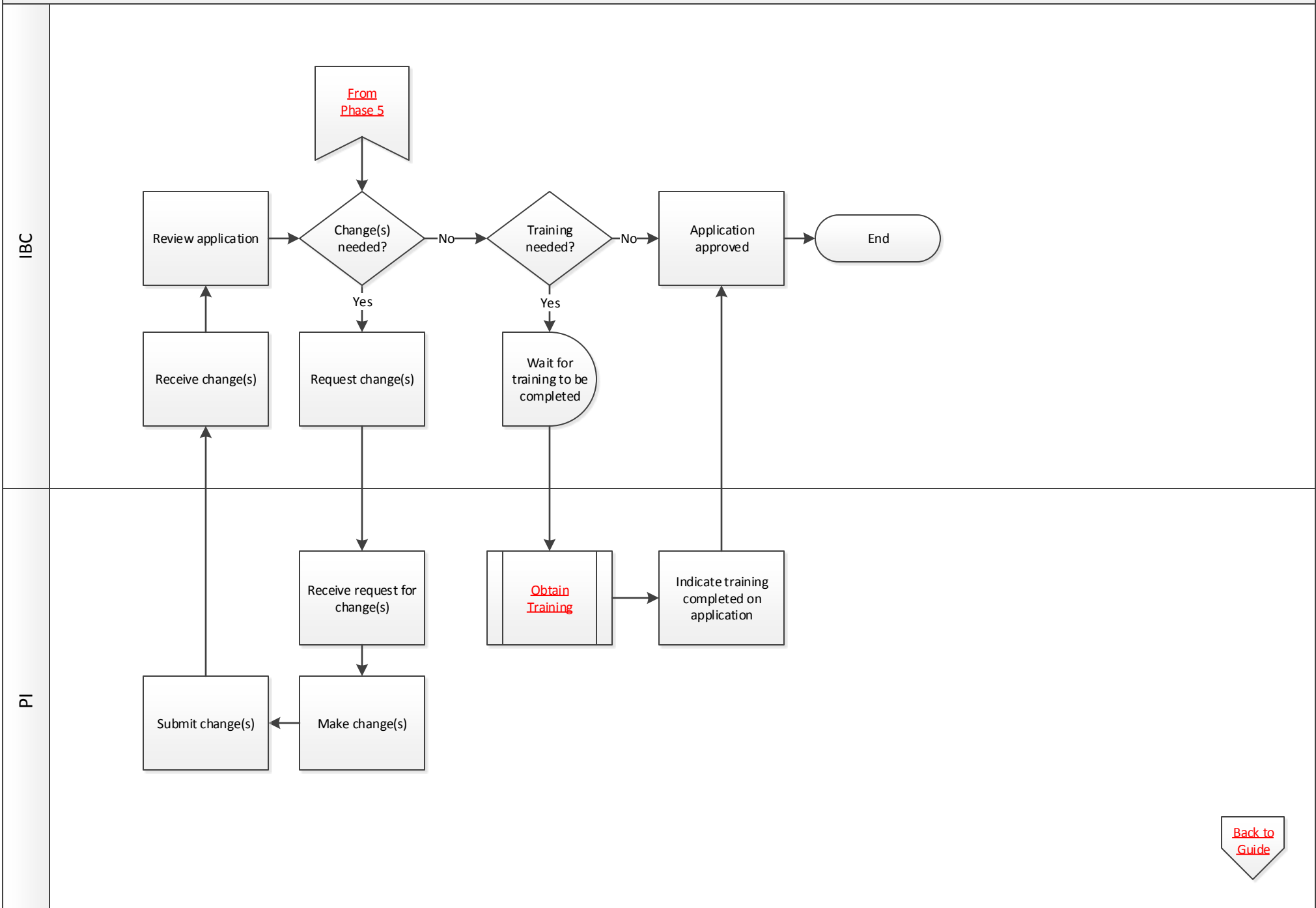


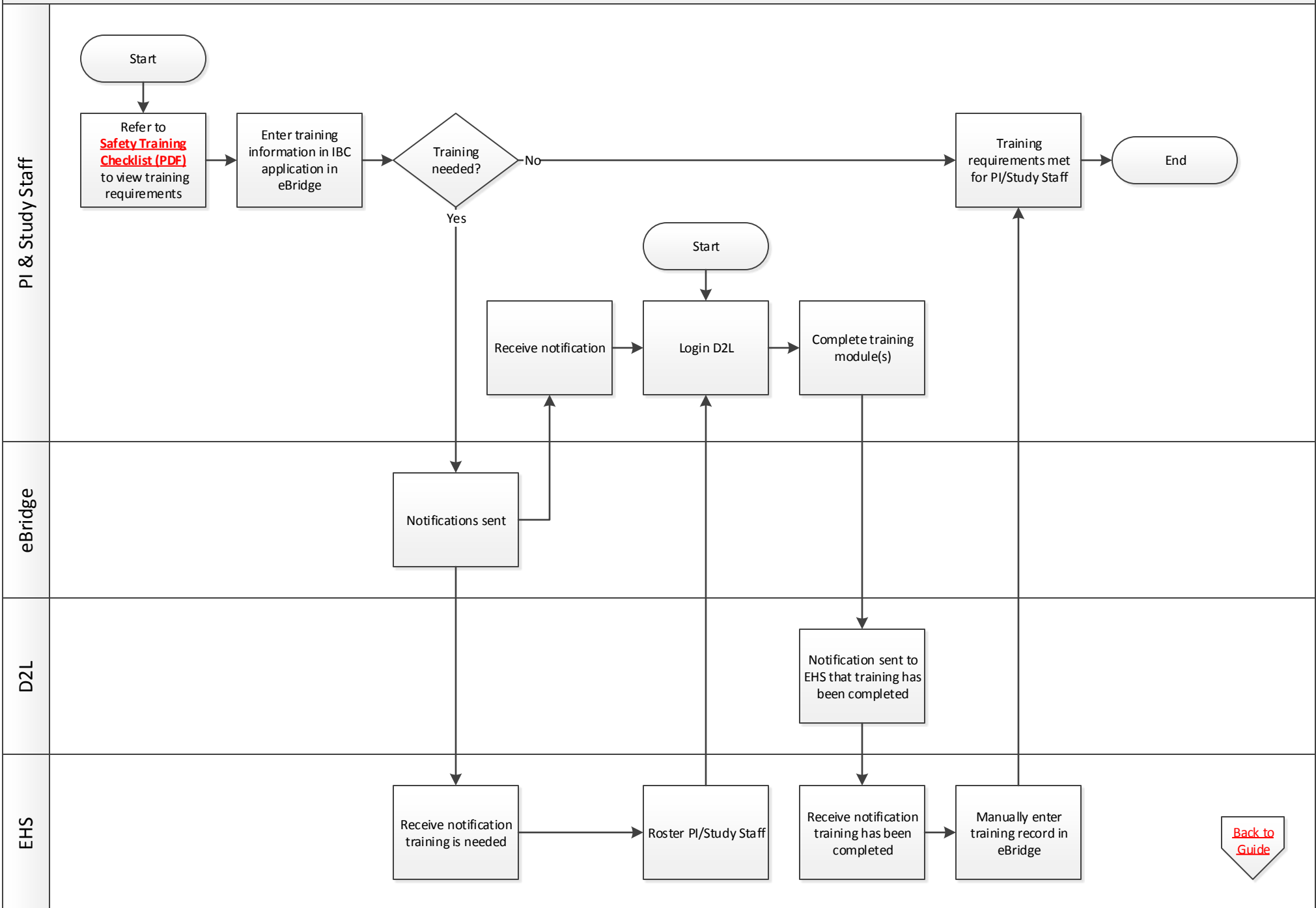
Biosafety approval process

Phase 5

Revised 9.20.18







[Back to Guide](#)