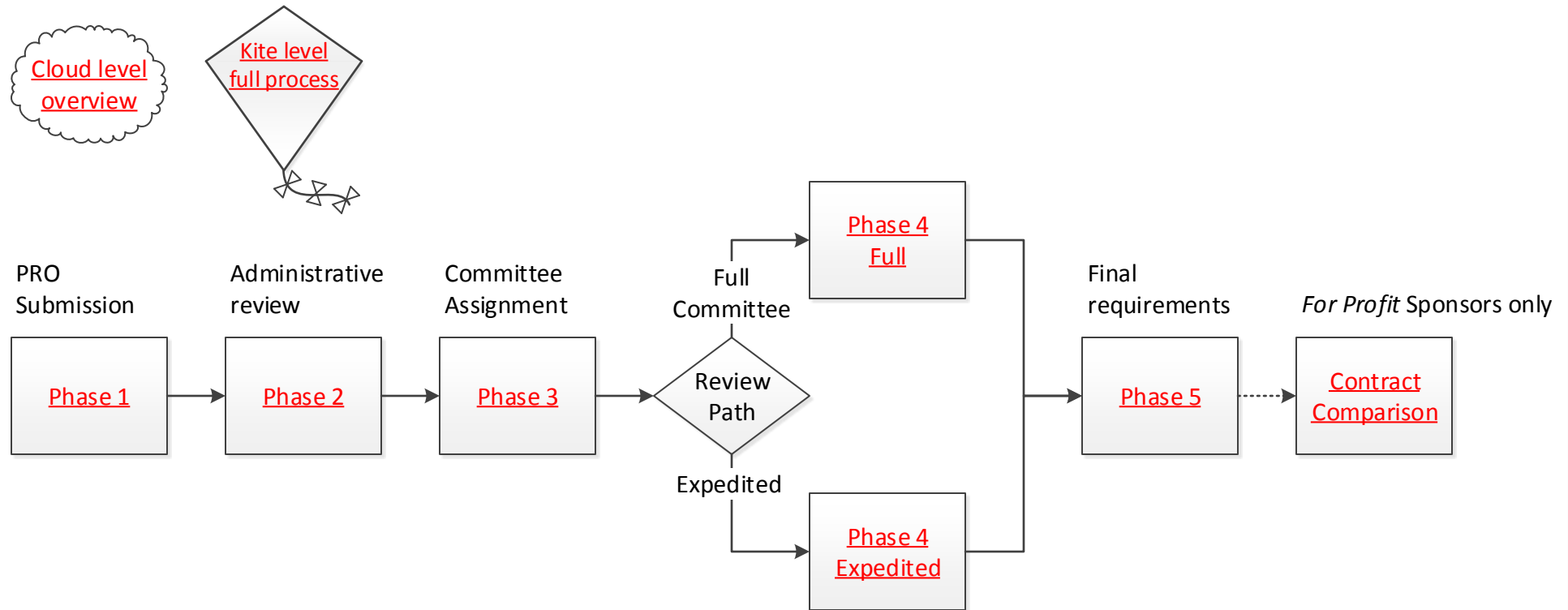


Important Notes

In order to conduct research with human subjects at MCW, including data and specimens, Principal Investigators (PIs) must obtain approval from the Institutional Review Board (IRB). For more information, visit [Working with Human Subjects](#) or email IRBOffice@mcw.edu

Median time from submission to approval for new protocols: Expedited Review = 28 days; Full Committee = 64 days

Index of Process Maps



Glossary

C2 – IRB Coordinator II

C3 – IRB Coordinator III

eBridge – online system for routing approvals

FP – Funding Proposal in eBridge

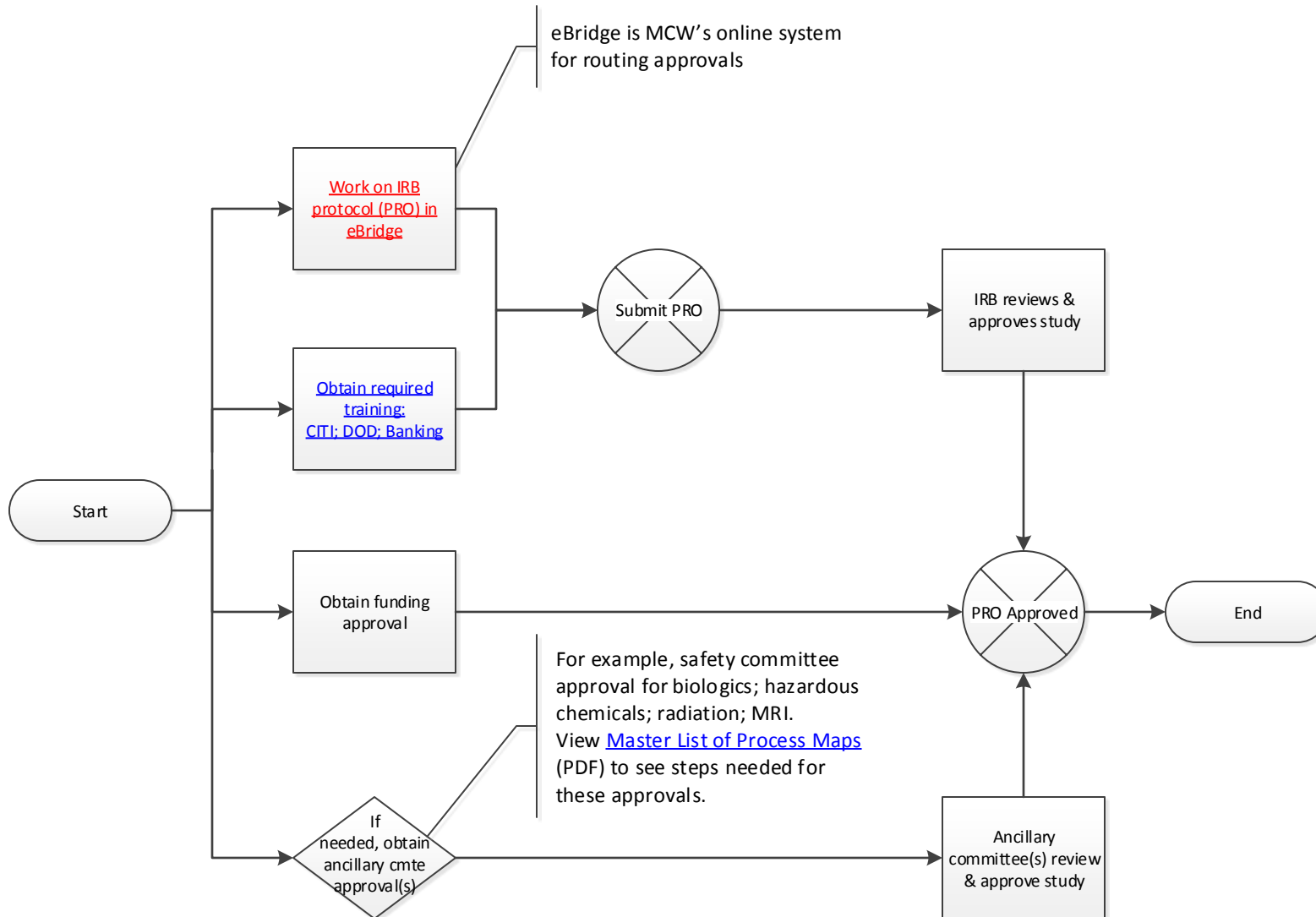
IRB – Institutional Review Board

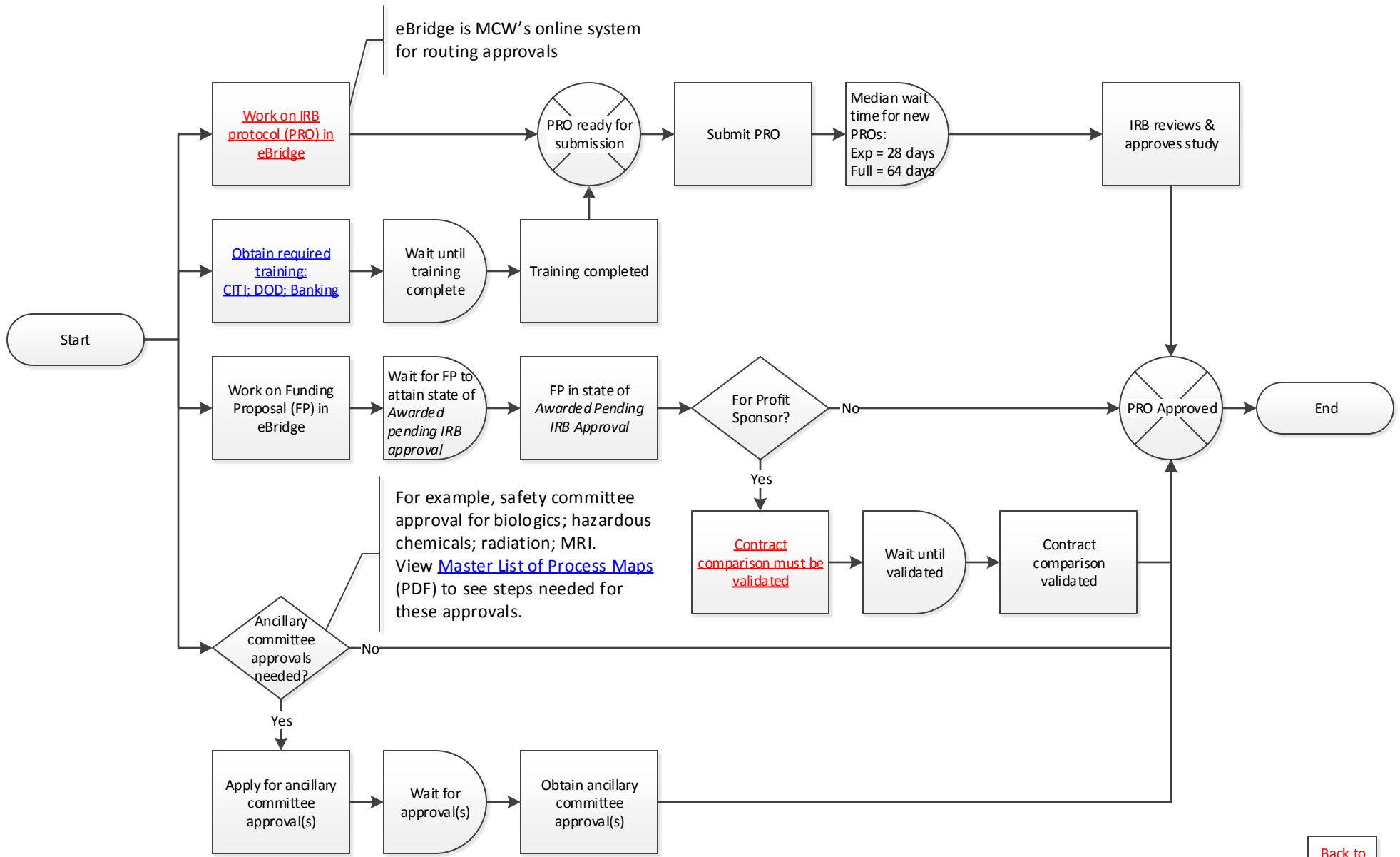
PI – Principal Investigator

PRO – human research protocol in eBridge

RSS – Research Support Specialist







Human research approval process

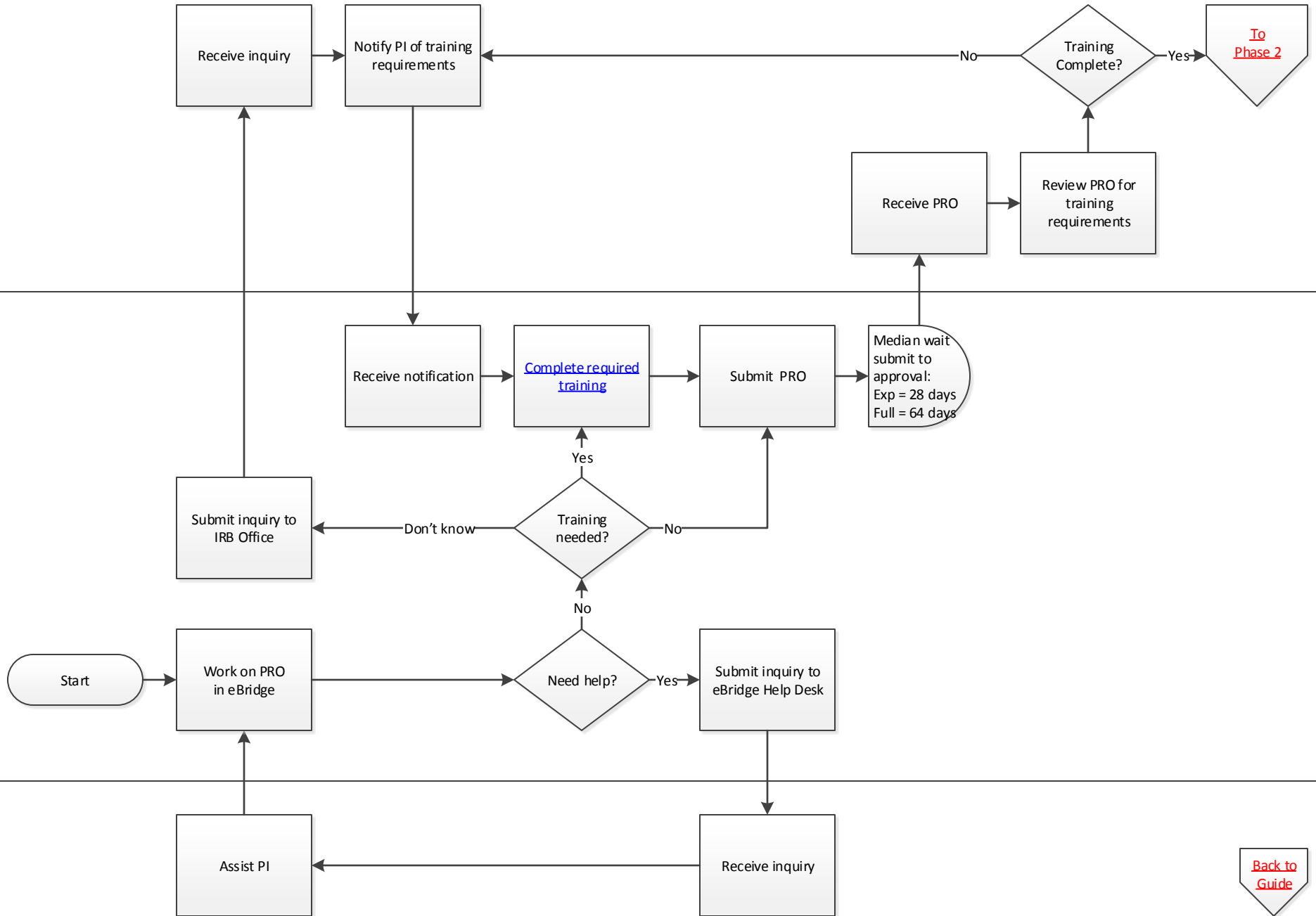
Phase 1

Revised 9.20.18

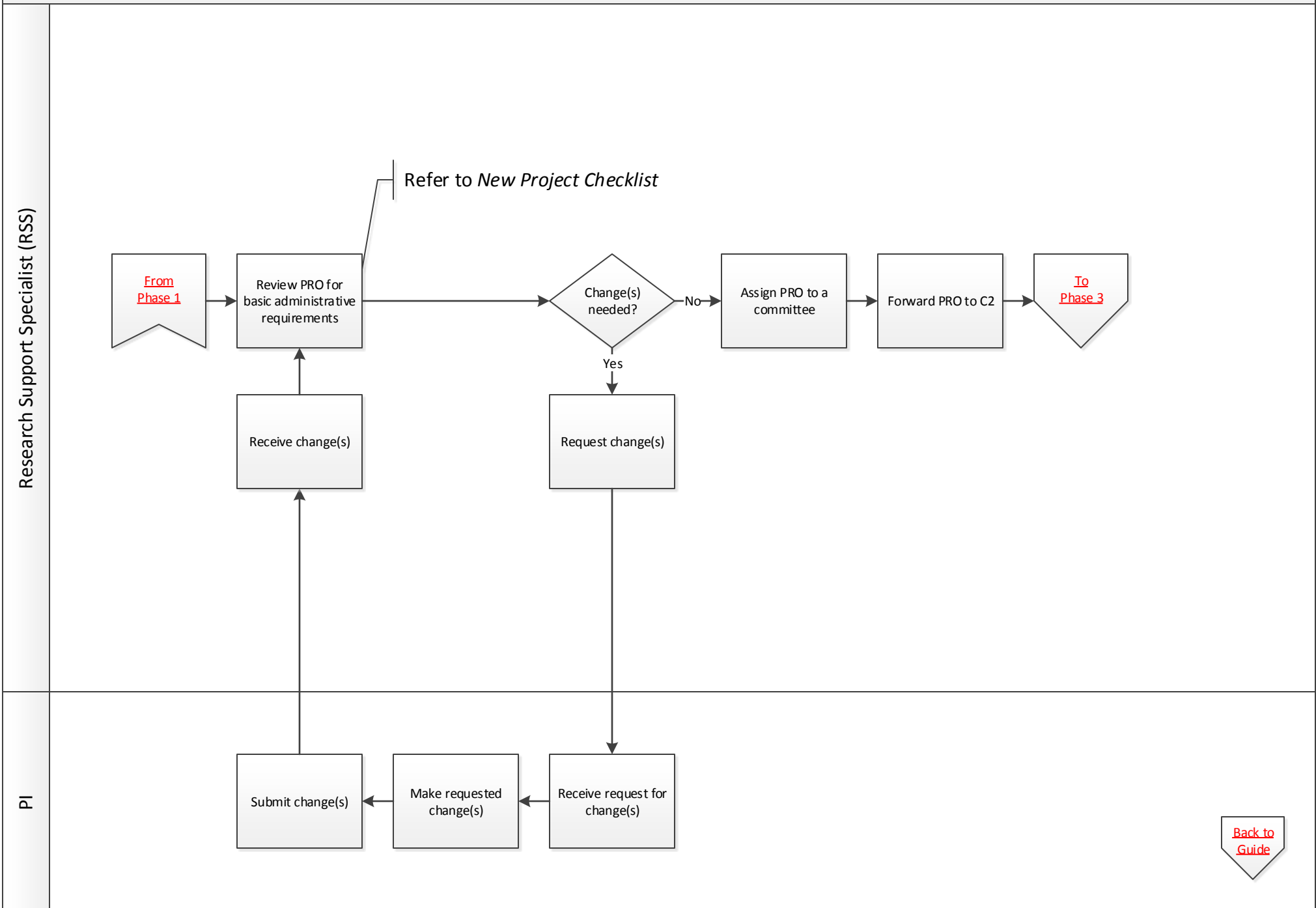
Research Support Specialist (RSS)

PI

eBridge Help Desk



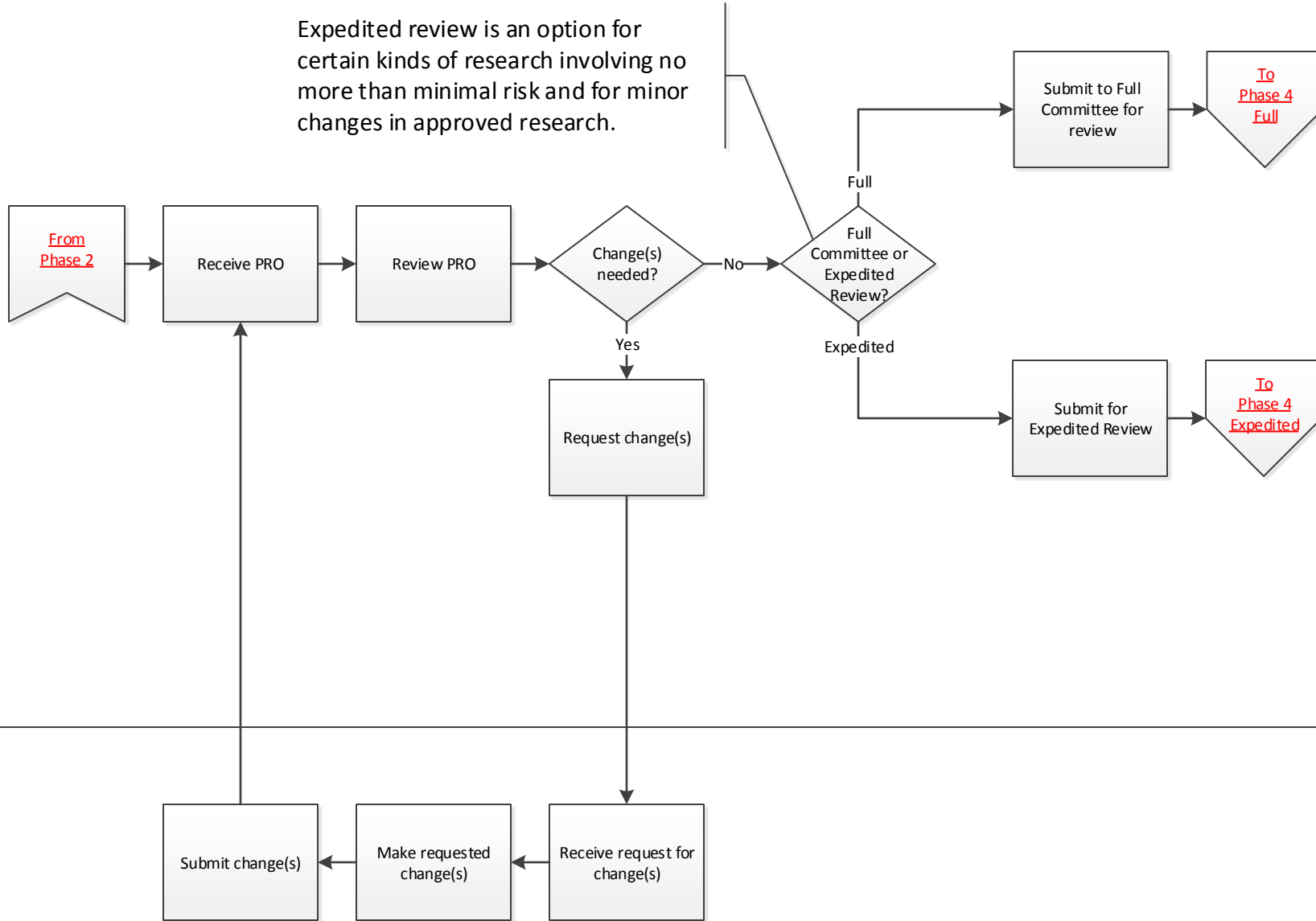
[Back to Guide](#)



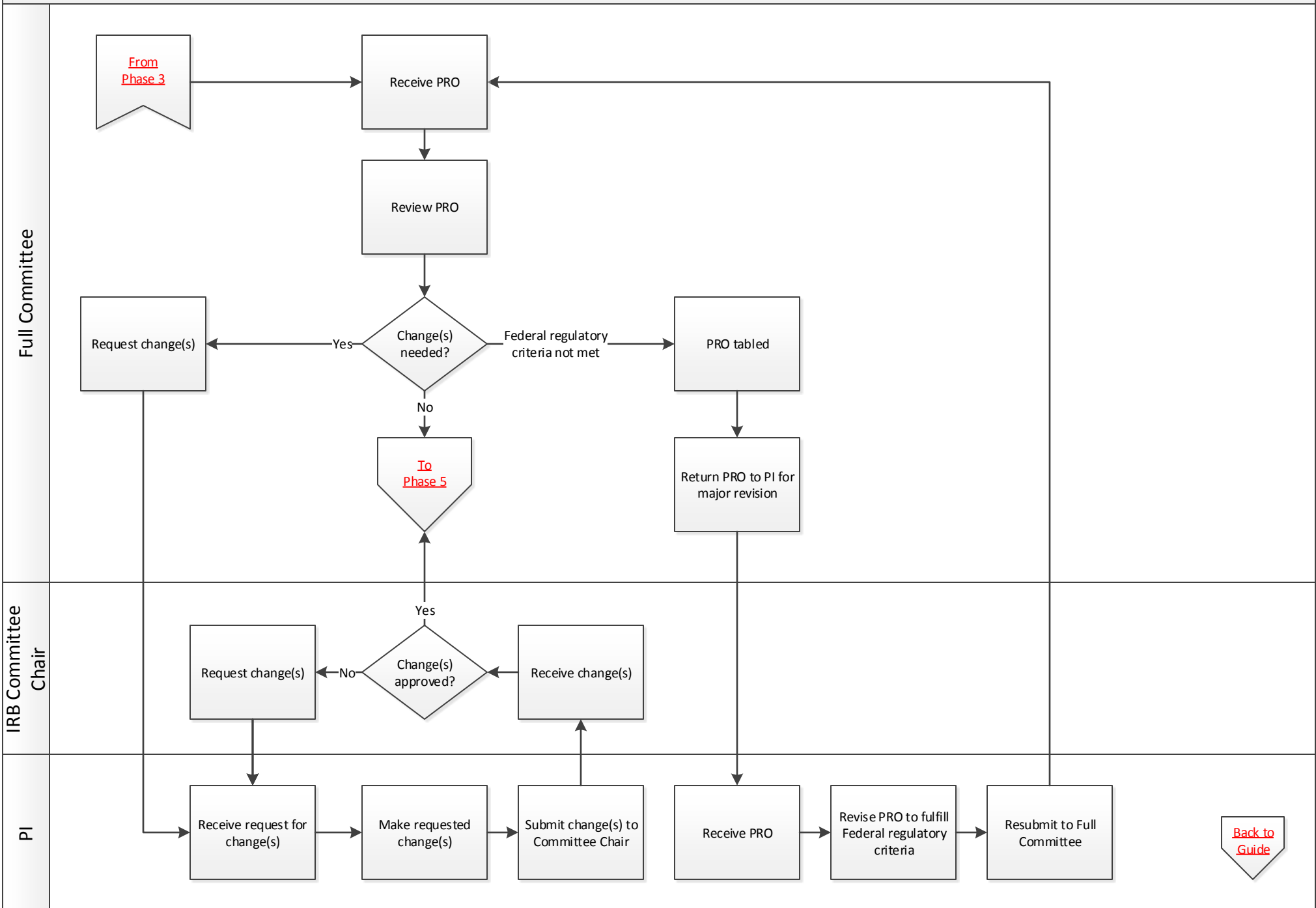
IRB Coordinator 2 (C2)

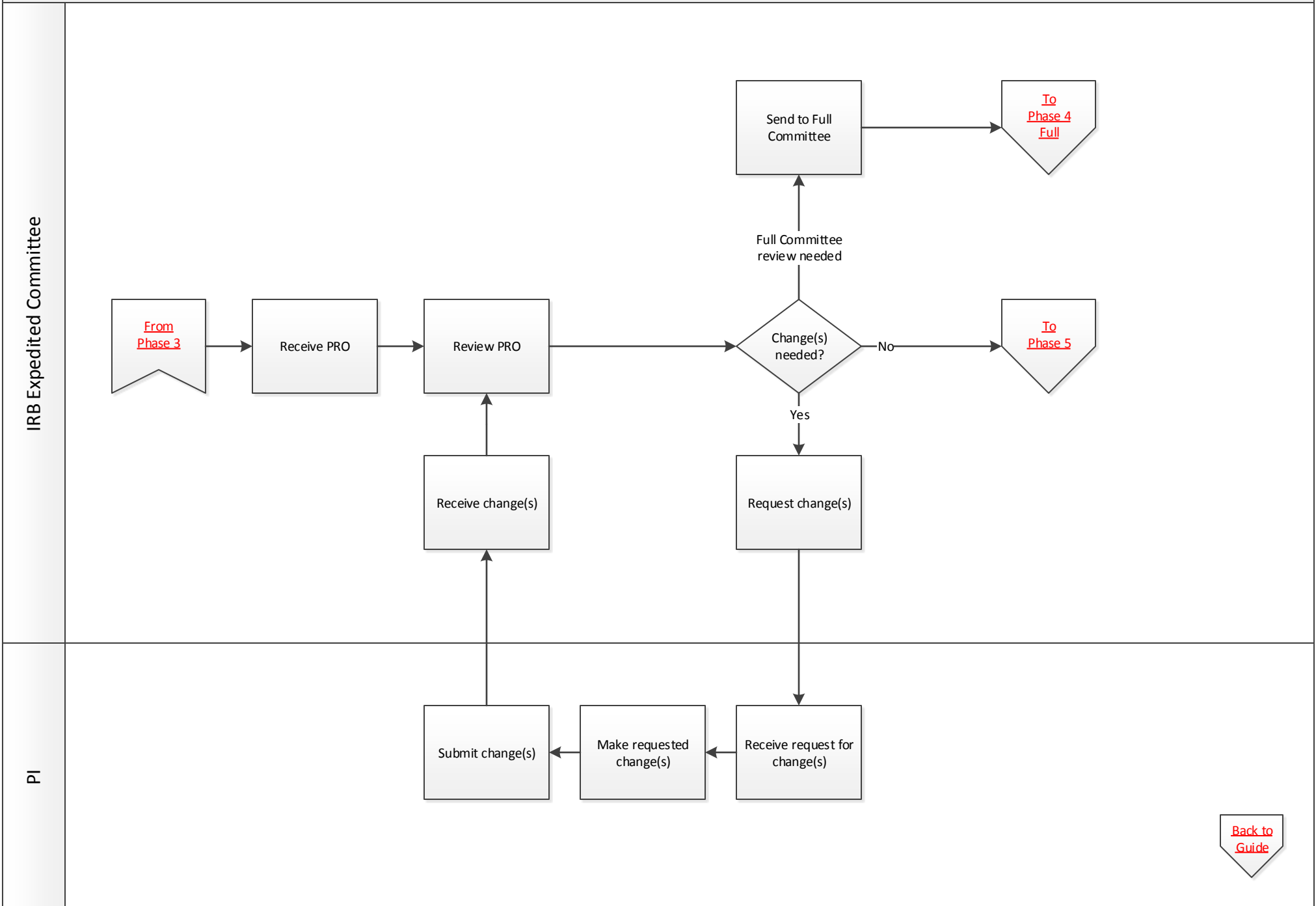
PI

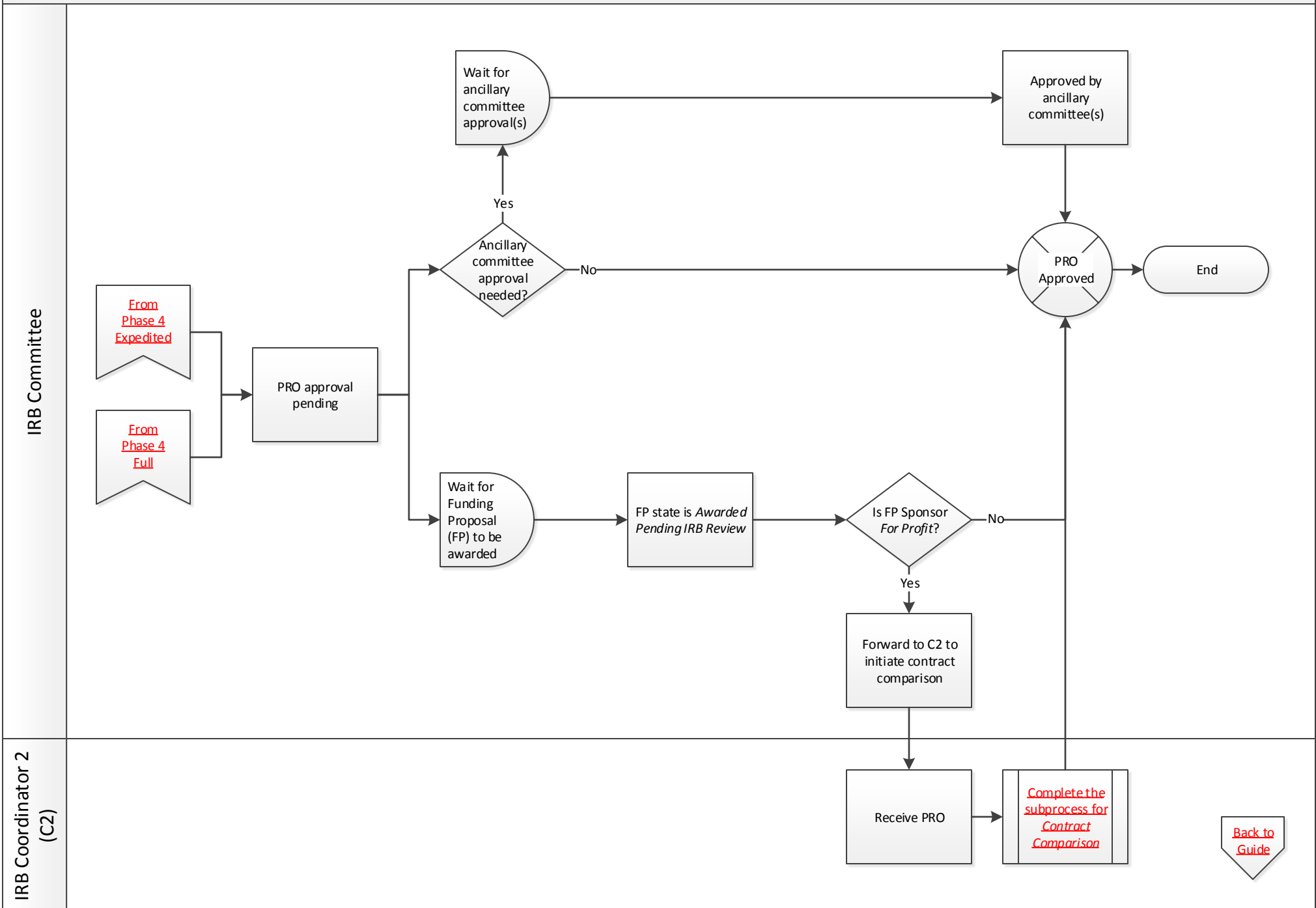
Expedited review is an option for certain kinds of research involving no more than minimal risk and for minor changes in approved research.



[Back to Guide](#)





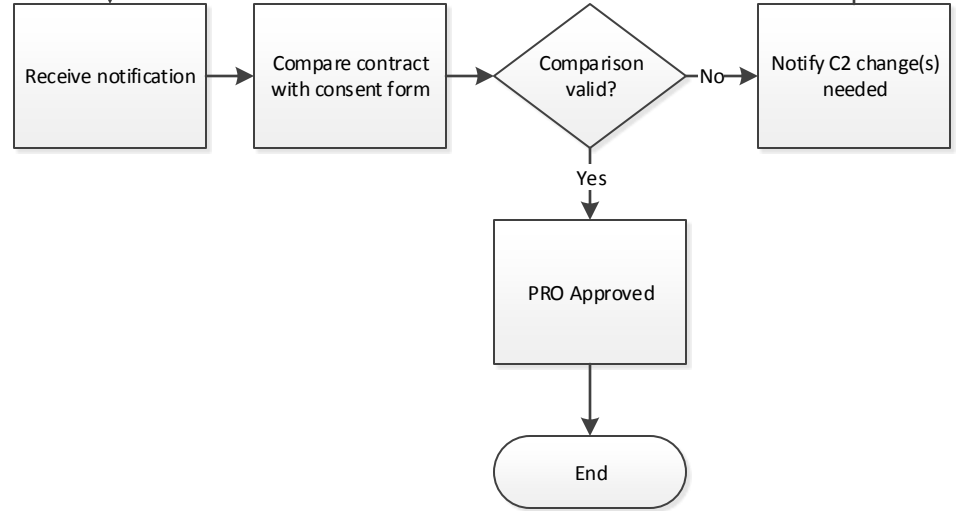


IRB Coordinator 2 (C2)

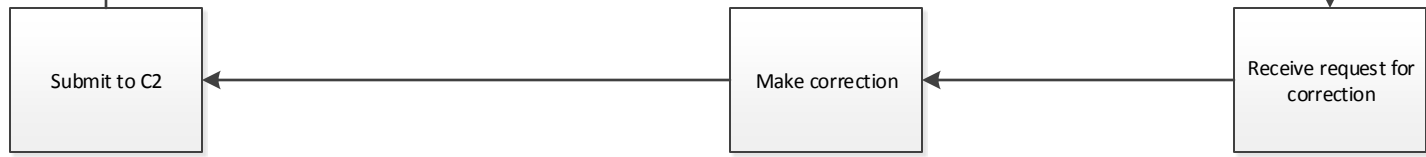
Only for studies with *For Profit* Sponsors



IRB Coordinator 3 (C3)



PI



[Back to Guide](#)