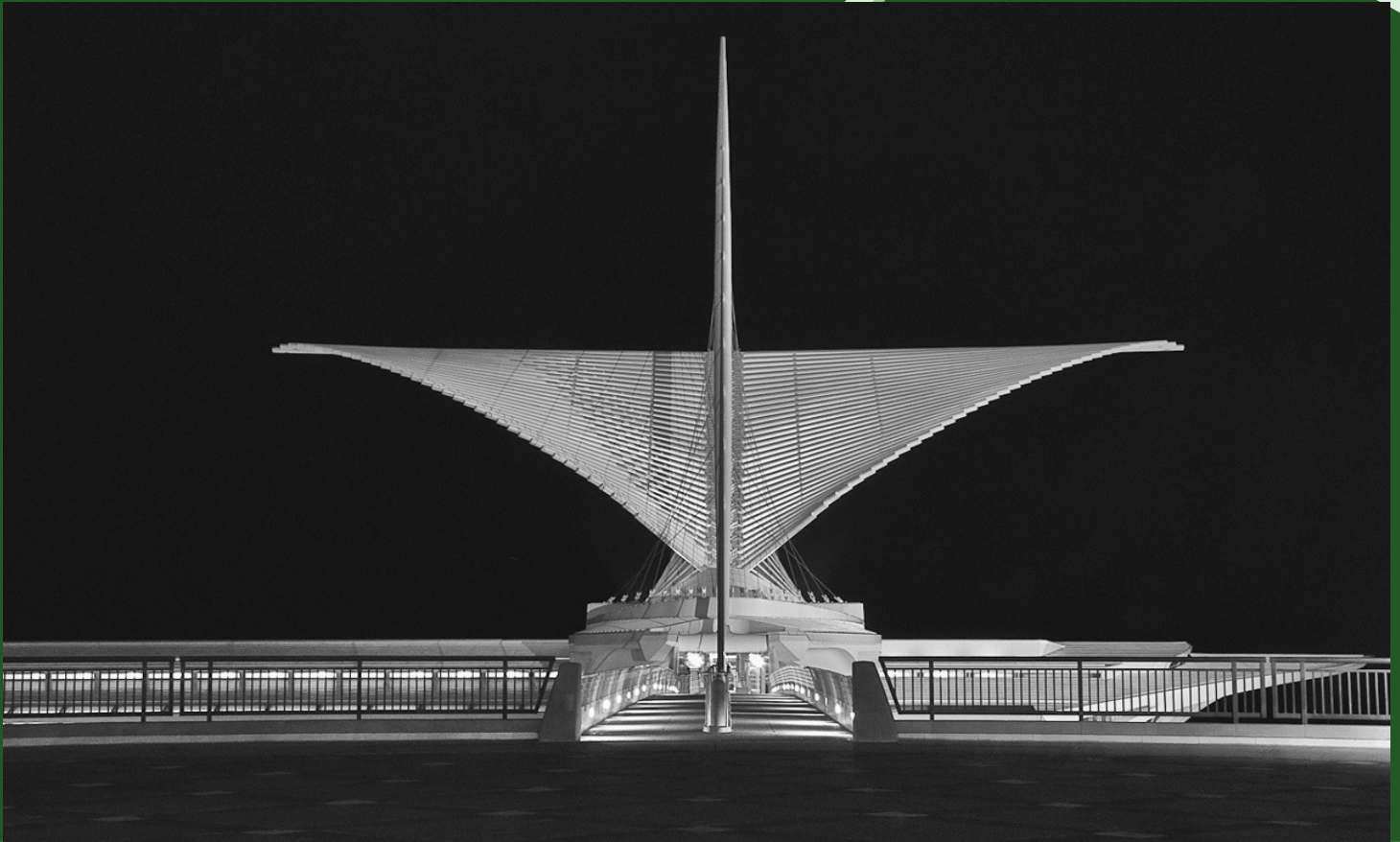


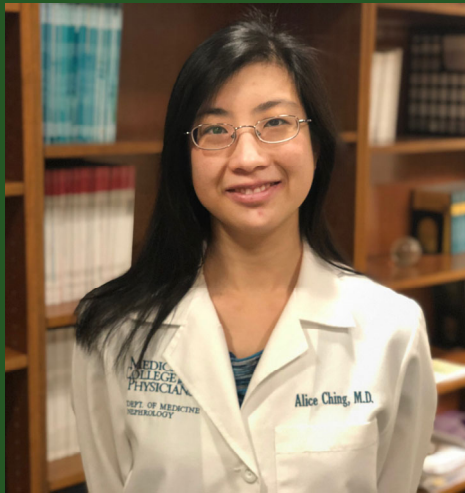
Medical College of Wisconsin



Nephrology Fellowship Program



2022-2023



MCW Mission:

We are a distinguished leader and innovator in the education and development of the next generation of physicians, scientists, pharmacists and health professionals; we discover and translate new knowledge in the biomedical and health sciences; we provide cutting-edge, collaborative patient care of the highest quality; and we improve the health of the communities we serve.

Dear Colleague:

Thank you for your interest in the Nephrology Fellowship Program at the Medical College of Wisconsin. The Medical College of Wisconsin (MCW) has a long established successful nephrology training program. The first nephrology fellow completed training from 1963 to 1965 at MCW (then Marquette University School of Medicine). Since then we have graduated >100 fellows who have gone onto successful careers in academic medicine and private practice. Our program benefits from broad clinical opportunities at two major training sites: Froedtert Hospital and the Clement J. Zablocki VA Hospital. Our excellence in clinical practice, innovative research programs, and leadership in academic medicine has led to national recognition, as noted by the Division of Nephrology's inclusion in the top 50 in the nation by US News and World Report for several consecutive years. Our fellows obtain a comprehensive education with a 100% board pass rate since 2017. There are extensive experiences for fellows in all aspects of nephrology including chronic kidney disease, dialysis, transplant, and acute and critical care nephrology, nephropathology, and point of care ultrasound (POCUS). Based on individual interests, fellows can perform research within a number of strong research programs at MCW, such as the Kidney Stone group, the large Renal Physiology group, and the Center for Patient Care and Outcomes Research. We ensure that our fellows develop the skills necessary for any of the diverse practice setting available in the field of Nephrology. We are currently accredited by the Accreditation Council for Graduate Medical Education (ACGME) with the longest cycle granted.

Sincerely ,

Alice Ching, MD

Associate Professor of Medicine

Division of Nephrology



Vision for the future

We are fortunate to have a strong foundation for our Nephrology Fellowship Training Program but also know that continued review and improvement is needed to meet the challenges of a changing nephrology landscape. The Medical College of Wisconsin prides itself on fellow and faculty led decision-making to continue to strengthen our program and ensure success for our trainees. We continue to build upon our core nephrology training but have also worked to increase the scope of our curriculum to utilize new techniques and focus on evolving fields. As dialysis practices have changed we have increased our curriculum and experience with home dialysis modalities and created multidisciplinary teams with our surgical colleagues to improve patient success with different dialysis modalities such as peritoneal dialysis. As innovative methods for continuous renal replacement therapy and volume monitoring are available, we adopt these into our clinical practice to provide cutting edge patient care. The Medical College of Wisconsin will continue to lead in the field of Nephrology and ensure our trainees develop the skills needed to practice in diverse clinical settings, conduct novel research investigations and critical appraisal of research findings, implement best practices in teaching, and maintain an approach to lifelong learning.





QUICK FACTS: MEDICAL COLLEGE OF WISCONSIN

HISTORY:

- ⇒ Founded in 1893 as the Wisconsin College of Physicians and Surgeons
- ⇒ Merged with the Milwaukee Medical College to become the Marquette University School of Medicine
- ⇒ The school continued as a private, national, freestanding institution, changing its name to the Medical College of Wisconsin (MCW) in 1970

PATIENT CARE/RESEARCH/EDUCATION:

- ⇒ Cares for approximately 530,000 patients annually
- ⇒ Second largest research institution in Wisconsin
- ⇒ More than 900 housestaff in 95 accredited residency and fellowship programs.

Meet the Division

Academic Leadership

Kevin Regner, MD, MS

-Division Chief,
Professor of Medicine

Alice Ching, MD

-Program Director,
Associate Professor of Medicine

Anna Gaddy, MD

-Associate Program Director,
Assistant Professor of Medicine

Andrew Maike, MD

-Associate Program Director,
Assistant Professor of Medicine

Nephrology Faculty

Ira Blau, MD
Samuel Blumenthal, MD
Barbara Bresnahan, MD
Aaron Dall, MD
Ashraf El-Meanawy, MD, PhD
Emily Joachim, MD
Christina Mariyam Joy, MD
Jack Kleinman, MD
Abhilash Koratala, MD
Zubin Lathara, MD
Bianca Madrid, MD
Mukoso Ozieh, MD, MCSR
Rima Patel, DO
Walter Piering, MD
Ehab Saad, MD, MA
Andrey Sorokin, PhD
Brahm Vasudev, MD
Vineet Veitla, MD
Jeffrey Wesson, MD, PhD
Dawn Wolfgram, MD

Advanced Nurse

Practitioners

Michelle Alfred, APNP
Betsy Beck, APNP
Stephanie Bruder, APNP
Jaime Cooley, PA-C
Kristin Gajewski, APNP
Sydney Langemeir, PA-C
Anne LaRosa, MSN, APNP
Nichole Melton, MSN, APNP
Leah Mydlach, APNP
Gregory Poulton, PA-C
Jill Saxton, APNP
Leslie Schwalbach, PA-C
Amanda Shafer, RN, MSN, APNP
Alison Volz, RN, APNP

Meet the Fellows



Aisha Batool,
MD

Medical School
King Edward
Medical University
Lahore, Pakistan

Residency
Bronx-Lebanon
Hospital Center
Bronx, NY

Buckley Fechter,
MD

Medical School
University of
Cincinnati College of
Medicine

Residency
Fairfield Medical
Center
Lancaster, OH

Sirisha
Gudlawar, MB,BS

Medical School
Kakatiya Medical
College

Residency
St. Mary Medical
Center
Langhorne, PA

Sarah
Komanapalli,
MD

Medical School
College of Medical
Sciences, Bharatpur

Residency
Marshfield Clinic
Health System
Marshfield, WI

Ahmed Taleb
Abdellah, MD

Medical School
Mut'ah University

Residency
St. Joseph Mercy
Oakland
Pontiac, MI

Hassan Homida,
MD

Medical School
University of
Khartoum

Residency
Aurora Health Care
Milwaukee, WI

Nephrology Fellowship—Medical College of Wisconsin



Conferences

Core Nephrology Topics: Every Friday from 2:00pm to 3:00pm/4:00pm. Faculty led lectures or small group discussion on core nephrology topics including but not limited to chronic kidney disease, glomerulonephritis, dialysis, vascular access and kidney stones and hypertension. We also include demonstrations of renal ultrasound, dialysis water treatment and technical aspects of home dialysis machines. Topics have corresponding readings in the textbook.

Case Conference: Every Tuesday from 3:00 to 3:30pm. A fellow presents a case under the supervision of a faculty. Faculty and fellow lead discussion and focus on one important topic for an interactive case-based learning session. These are attended by fellows, faculty and advanced practice providers, as well as residents and medical students on service.

Nephrology research conference: Every Tuesday from 3:30pm to 4:30pm. Research presentations and journal clubs are led by faculty from MCW or guest speakers from other institutions. These focus on novel research findings and new clinical practices.

Renal Biopsy conference: The third Tuesday of the month from 3:30pm to 4:30pm. This is typically presented by our Nephropathologist, who reviews nephrology pathology slides from recent cases and aid fellows in interpretation.

FMLH Vascular Access conference: The second Thursday of the month at 7:30am.

VA vascular access conference: The first Wednesday of the month from 4:00pm to 5:00pm.

These multidisciplinary conferences bring together nephrologists, vascular access surgeons and interventional radiology to discuss and trouble shoot patients with vascular access issues. Attended by fellows during their outpatient rotations.

VA dialysis Committee: The third Tuesday of the month from 12:00pm to 1:00pm. Multidisciplinary meeting of nephrologists, nurses, social worker, dietician, technicians and biomedical engineering to review quality metrics of the VA dialysis unit and implement changes as needed. Attended by fellows on their VA outpatient rotation.

Transplant Case and Research Conference: Every Tuesday from 3:00pm to 4:00pm. Various topics on transplant medicine are discussed and this is attended by fellows during their transplant rotation.

Pre-transplant/Living Donor Kidney Transplant Selection committee: Every Friday starting at 1:00pm. This is attended by the multidisciplinary transplant team, which includes nephrologists, surgeons, social workers, psychologists, and pharmacists. This is attended by fellows during their transplant rotation.

Nephrology Fellowship—Medical College of Wisconsin

The Program: Highlights

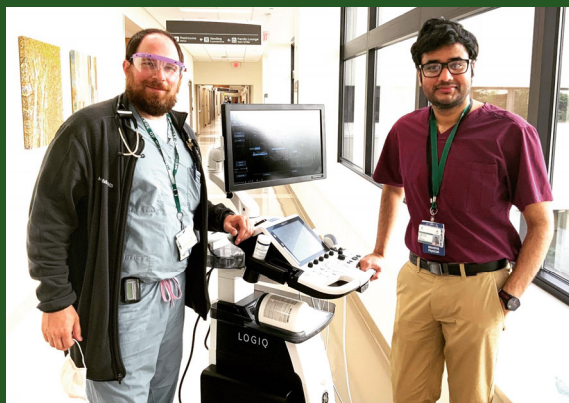
Point of Care Ultrasound (POCUS):

Point of care ultrasonography (POCUS) is an invaluable adjunct to physical examination and is being increasingly adopted by health care professionals from various medical specialties. POCUS performed at the bedside is primarily intended to provide answers to focused questions such as: “Does the patient have hydronephrosis?”, “Is there a pericardial effusion?”, “what is the volume status?” etc. and narrow the differential diagnosis.

At MCW, we offer a comprehensive POCUS training program for nephrology fellows led by Dr. Abhilash Koratala, who is a national leader in this field and well known for his educational blog, NephroPOCUS.com. In addition, he has authored several articles and book chapters on this topic. The ‘POCUS-enhanced’ cardiorenal clinic run by Dr. Koratala is one of a kind in the country and employs multi-level hemodynamic assessment including Doppler echocardiography and abdominal vein Doppler in patients with heart failure.

Our POCUS curriculum is designed to provide longitudinal training spread out over the 2-year fellowship to facilitate long-term skill retention. Key sonographic applications taught include urinary tract, lung, focused echocardiography, and dialysis access ultrasound. We ensure that each fellow gets adequate hands-on experience with emphasis on integrating the POCUS findings into clinical decision making. At the end of nephrology fellowship, every fellow will have performed at least 25-50 scans in each sonographic application as recommended by professional organizations. We do understand that competency is not just about the number of studies, and in our program, we monitor error rates through a quality assurance process that involves both providing feedback in real time by the bedside and retrospective review of the saved images performed by each trainee using standardized tools. The division of nephrology has a dedicated portable ultrasound machine as well as an established image-archiving system.

Dr. Koratala can be found on twitter: @NephroP.



The Program: Highlights

Nephropathology:

Nephrology fellows gain experience in renal pathology with Dr. Gallan through a structured 2 week rotation, monthly biopsy conferences, and didactic sessions. Fellows are also encouraged to review biopsies on their patients in real time with Dr. Gallan and discuss clinicopathologic correlations. Previous fellows have published manuscripts and abstracts with Dr. Gallan and the Nephrology faculty involving renal pathology. He can be found on Twitter: @glom_busterMD.



Critical Care Nephrology:

Interested and qualified candidates will have the opportunity to interview with our critical care program at the end of their 1st year for a one year fellowship to start after the completion of their Nephrology fellowship. Accepted candidates will have increased critical care focus and learning opportunities during their second year of fellowship to prepare for the transition.



The Program: Rotations

Acute Nephrology:

In the FMLH acute rotation, the inpatient fellow provides consultative services for Froedtert hospital inpatients, excluding the ICU. This covers a diverse patient population, and includes the hematology/oncology floors as well as obstetrics/gynecology. Typical consults include acute kidney injury, electrolyte imbalances, initiation of renal replacement therapy, but may also include diagnosis and treatment of glomerulonephritis and renal manifestations of systemic illnesses. The inpatient rotation provides an opportunity for biopsies, as well as education of both the patients and the inpatient consulting teams.

ICU:

In the FMLH ICU rotation, the inpatient fellow provides consultative services for Froedtert hospital inpatients in the medical, surgical, cardiac, neuro, and transplant ICUs. This rotation provides an exposure to critical care nephrology and the care of critically ill patients, including volume management, evaluating the need for renal replacement therapy, and prescription of CVVH. education of both the patients and the inpatient consulting teams.

Transplant Nephrology:

In the FMLH transplant rotation, the inpatient fellow provides consultative services for Froedtert hospital inpatients with renal transplants, as well as serving as the Nephrology consultant for patients with other organ transplants. Curriculum highlights include clinical and laboratory diagnosis of all forms of rejection, evaluation and selection of transplant candidates, immediate postoperative management of kidney and pancreas transplant recipients including administration of immunosuppressants, exposure to the ambulatory setting, medical management of rejection, preoperative evaluation and preparation of transplant recipients and donors, psychosocial and ethical issues of transplantation, and recognition and medical management of the surgical and nonsurgical complications of transplantation. Additional elective opportunities include exposure to the HLA lab, donor call, transplant psychology, organ procurement, living donor pre-operative evaluation, and outreach clinic.



The Program: Rotations

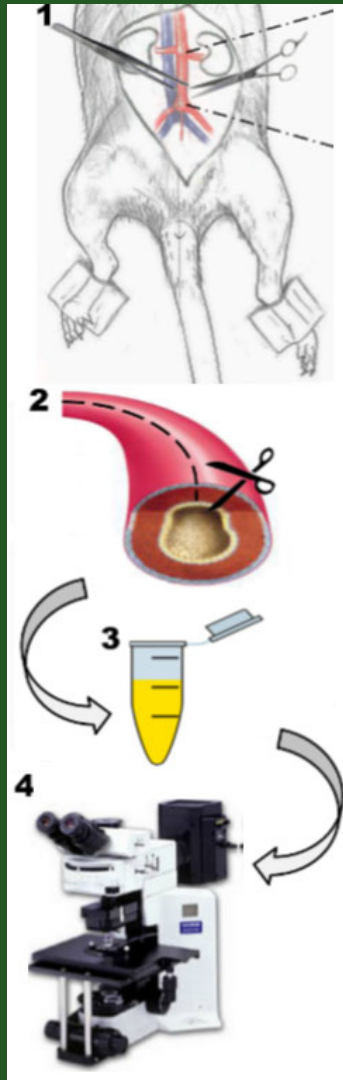
VA Inpatient:

In the VA inpatient rotation, the inpatient fellow provides consultative services for the VA hospital, including both floor and ICU patients. Typical consults include acute kidney injury, need for renal replacement therapy, electrolyte imbalances, and transplant care. The inpatient rotation provides an opportunity for procedures, as well as education of both the patients and the inpatient consulting teams.

VA Outpatient:

In the VA outpatient rotation, fellows have an average of a half day of nephrology outpatient clinic each day, in addition to their continuity clinic. This includes care for patients with hypertension, electrolyte imbalances, kidney stones, chronic kidney disease, and transplant. The fellows also attend the vascular access clinic and peritoneal dialysis clinic when available, round with an attending for outpatient dialysis twice a week, and attend the monthly dialysis and access conferences at the VA. The fellows also have the opportunity to perform any outpatient biopsies that are scheduled.





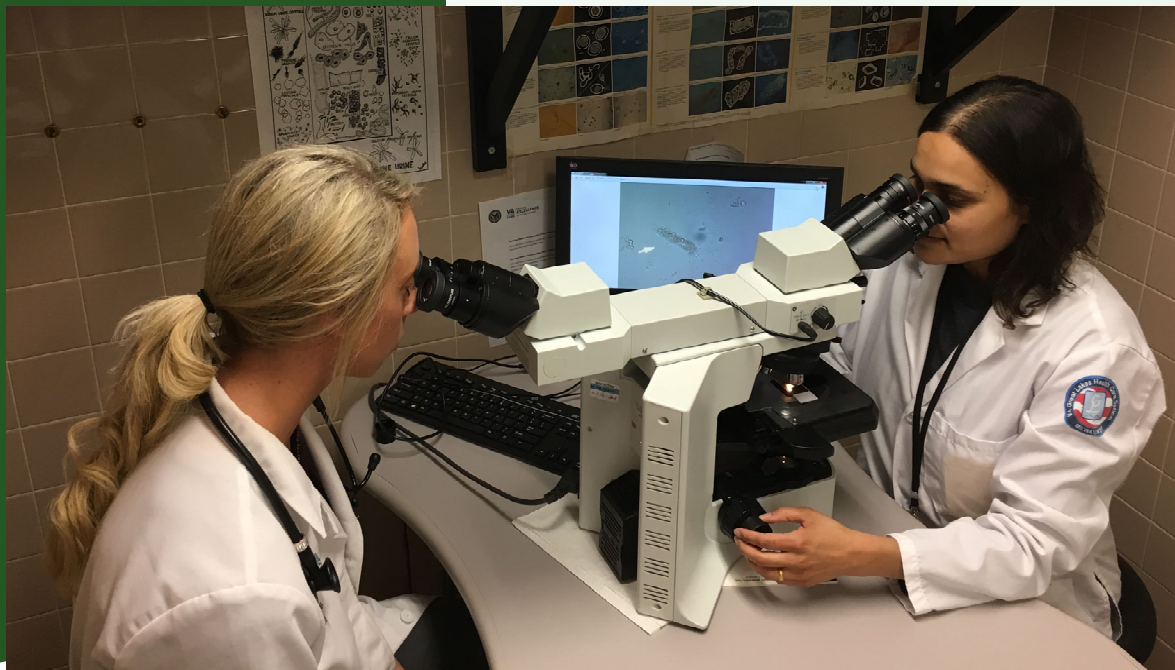
The Program: Rotations

Research:

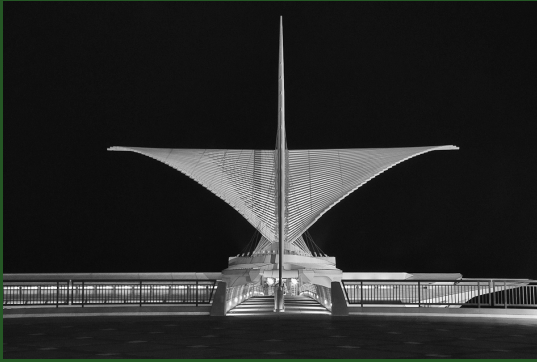
During the two year fellowship our fellows have diverse opportunities for research ranging from basic science to clinical trials. We have faculty working in acute kidney injury, mechanism of chronic renal injury, renal cell biology and signaling, kidney stone research, clinical trials in both diabetic nephropathy, and transplant and patient outcome oriented clinical research. Our faculty are part of a number of MCW research institutions including the Cardiovascular Research Center and the Center for Patient Care and Outcomes Research. Fellows are able to identify a research mentor that will help them develop a research project and guide them through completion. The second year fellowship schedule can include up to 4 months of research.

Electives:

There are several electives that can be chosen in place of those research months, depending on the fellow's interests and future plans. The electives include renal biopsy and nephropathology, inpatient or outpatient transplant, community outpatient dialysis, alternative dialysis (peritoneal dialysis, home hemodialysis, and nocturnal dialysis), or point of care ultrasound (POCUS).



Life in Milwaukee



-Located on the western shores of Lake Michigan, Milwaukee is the largest city in Wisconsin with a population of approximately 600,000 residents in city limits. The population of the metropolitan Milwaukee area has an estimated population of more than 1.6 million people.

-Home of Summerfest, the world's largest music festival. The city is also home to many cultural centers, including the world famous Milwaukee Art Museum, the Marcus Center for the Performing Arts, and the Pabst Mansion. The many bars and restaurants in historic 3rd Ward serve as home to an important part of Milwaukee's night life.

-Home to the Brewers (MLB), Bucks (NBA), Wave (MISL), and Admirals (AHL). The Packers (NFL) are located a short drive north in Green Bay, WI.

-Milwaukee boasts high quality affordable housing, excellent public and private schools, a world-class park system, and short commuting times for a major metropolitan area. These attributes make the Milwaukee area an outstanding place to raise a family.

-Two major universities, Marquette and UW-Milwaukee, are located in Milwaukee

-More information about life in Milwaukee can be found at the following websites:

Discover Milwaukee: <http://www.discovermilwaukee.com/>

ChooseMilwaukee.com: <http://choosemilwaukee.com/>

Salaries and Benefits

Salary Levels (for 2022-2023):

PGY 4: \$68,580

PGY 5: \$71,980

PGY 6: \$74,250

Vacation:

Fellows have three weeks of paid vacation per academic year. An additional week is available for attendance at national meetings or educational conferences. The Department provides travel support up to \$1,000.

Insurance:

A health insurance policy is provided effective immediately upon the starting date in the program.

A dental program is available on a payroll deduction basis effective immediately upon starting date.

Day Care Services:

Campus Child Care provides quality day care and educational programs for children age six weeks through six years, as well as summer programs and before/after school care for older children. The day care is conveniently located just off campus. The Campus Child care is a licensed program.

<https://child-care-preschool.brighthorizons.com/wi/milwaukee/watertownplank>



APPLY NOW

How to Apply

The Division of Nephrology offers 3-4 fellowship positions per year and participates in ERAS, the Electronic Residency Application System.

Interested applicants must submit all of the following documents through ERAS at :

<https://www.aamc.org/services/eras/>

ERAS application

CV

Personal statement

USMLE transcripts

Three letters of recommendation

Photo

Valid ECFMG certificates (foreign medical graduates only)

Contacts:

Alice Ching, MD
Associate Professor of Medicine
Fellowship Program Director
414-955-0438

Robin Karst, C-TAGME
Program Manager
Nephrology Fellowship
414-955-0438
rkarst@mcw.edu

