

Proud to be in the Department of Surgery

Douglas B. Evans, M.D.

February 14, 2018

Understanding Academic Medical Centers: Simone's Maxims¹

Editorial

Joseph V. Simone²

Huntsman Cancer Institute, University of Utah, Salt Lake City, Utah
84112



Marc Lustgarten

Academic Medicine Is a Noble Calling. Despite the problems, it can be the most fulfilling and rewarding of professions, if taken with a sharp eye for reality, a dash of iconoclasm, and a ready sense of humor. These jobs are difficult and certainly not rewarding 24 h a day; sometimes we are lucky to get 24 h a month. But we in academic medicine are blessed in many ways compared with those in most jobs. We have the privilege

Academic Medical Center

Culture of education – lifelong learning

Emphasis on new knowledge (research)

Ability to translate new knowledge into better treatments

Excitement in witnessing discovery being interpreted as hope



Department of Surgery – NPs, PAs, Perfusionists – as of 2/13/2018

Division of Cardiothoracic Surgery



Kathie
Gandy, PA

Stephanie
Wills, PA

Gina
Mazzoni, PA

Stephanie
Pinto, PA

Amanda
Schumacher, NP

Angi Strassman,
RN, NP

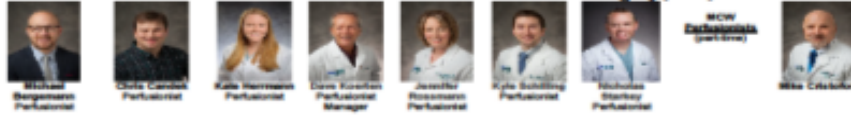
Tim Shi, NP

Heather
Sutler, PA

Lisa
Thomas, PA

Tasha
Winters, NP

Division of Cardiothoracic Surgery (cont'd)



Michael
Bergmann
Perfusionist

Chris Campbell
Perfusionist

Kate Harrison
Perfusionist

David Korman
Perfusionist Manager

Jessica
Rosenmann
Perfusionist

Kyle Schilling
Perfusionist

Nicholas
Stanley
Perfusionist

MCW
Endovascular
Lab (cont'd)

Mike Cichowski

Division of Colorectal Surgery



Leborah
Anolik, NP

Sarah
Lambert, NP

Samantha
Vickus, PA

Division of Congenital Heart Surgery



Curtis
Pugh, PA

Danielle
Somerville, PA

Kim
South, PA

JAMES DODD, MD, FRCR
JENNIFER DODD, MD
JOHN FRIEDLANDER, MD
MICHAEL WALTRICH, MD
SHUO RAY

Division of General Surgery



Leah
Hagan, PA

Aimee
Hassler, PA

Schneider, PA

Webster, NP

Division of Pediatric Surgery



Emily
Borcher, PA

Diana
Chen, PA

Emily
Dorke, PA

Julie
Kitterson, PA

Deborah
Larson, PA

Kimberly
Somers, PA

Whitt, PA

MCW Pediatric
Surgery
Resident
DANIELA
LYNN COLAWAY

Division of Surgical Oncology



Debra
Dotson, NP

Lisa
Grabel, NP

Emily
Kizyela, NP

Joanna
Kutrugly, NP

Jessica
Marble, NP

Sarah
Wiscott, PA

Aimee
Purdy, NP

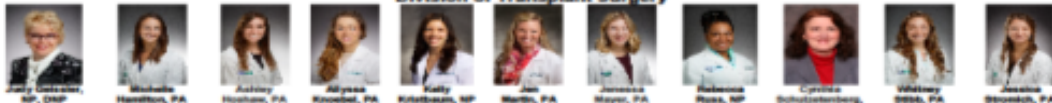
Colleen
Pytkuk, NP

Tanya
Radke, NP

Kim Hsu, NP

Wetzel, NP

Division of Transplant Surgery



Paul J. Glickstein,
NP, DNP

Michelle
Hamilton, PA

Ashley
Hosham, PA

Alyssa
Knoedel, PA

Kelly
Kittobeen, NP

Jan
Marlin, PA

Jessica
Mayer, PA

Helene
Rosa, NP

Corinne
Schulzberg,
PA

Whitney
Sosa, PA

Jessica
Stronch, PA

Division of Trauma and Acute Care Surgery



Susan
Anderson, NP

Bonnie
Enckson, NP

Amanda
Flagg, NP

Kelly Gordon-
Mayer, NP

Cheryl
Gronitsch, NP

Tracy
Robertson, NP

Randi
Rhead, NP

Kerry
Short, NP

Mary Stauber,
NP, DNP

Colleen Treinen,
NP, PhD

Martha
Tyndal, NP

Division of Vascular Surgery



Allison Flaxton, NP,
Vascular Clinic

Courtney
Johnson, PA

Denise
Larisa, NP

Leanne
Needles, NP

Barbara
Proctor, NP

Kate
Rughe, PA

Steve
Rubinstein, PA

Baris
Schulzberg, NP

“The Word on Medicine”

Listen in April for our show on “Survivorship” featuring Bob Uecker
iHeart Media – WISN 1130AM





“The Word on Medicine” Programs Recorded to Date

Topic	Program Chair
Breast Cancer	Amanda L. Kong, M.D., M.S.
Heart Surgery and Transplantation	Paul J. Pearson, M.D., Ph.D.
Pancreatic Cancer	Douglas B. Evans, M.D.
Bariatric Surgery	Rana M. Higgins, M.D.
Trauma Response to Mass Casualty	Marc A. de Moya, M.D.; David M. Gourlay, M.D.
Liver and Kidney Transplantation	Johnny C. Hong, M.D.
Colon Cancer	Carrie Y. Peterson, M.D., M.S.; Timothy J. Ridolfi, M.D.
Pediatric Surgery	Marjorie J. Arca, M.D.
Vascular Disease	Peter J. Rossi, M.D.
Gynecology Oncology	Denise S. Uyar, M.D.
Women’s Cardiovascular Health, Part I	Nicole L. Lohr, M.D., Ph.D.
Women’s Cardiovascular Health, Part II	Nicole L. Lohr, M.D., Ph.D.

Importance of Academic Achievement and Scientific Discovery



13th ANNUAL
Academic Surgical Congress
January 30 – February 1, 2018

- Department of Surgery: Founding Institutional Member
- 2018: 25 abstracts
 - 10 oral presentations
 - 15 quick-shot presentations
 - AAS Medical Student Competition Quickshot Session
 - "Induction Chemotherapy vs. Standard Treatment for Locally Advanced Rectal Cancer" Nganzeu C, Blank JJ, Ali F, Hall W, Peterson C, Ludwig K, Ridolfi T.
- Surgical Jeopardy: Lindsey Clark, M.D. and Joey Helm, M.D.
- Society of University Surgeons Social and Legislative Issues Committee Lunch Session: Building Diversity and Equity in Academic Surgery
 - Sabina Siddiqui, M.D.: "Praying in Stairwells"

T Wang, MD



The We Care Fund for Medical Innovation and Research

- Established 2010
- Donations from >750 grateful patients, families, friends, faculty, and alumni
- Raised >\$1M
- Awarded \$615,000



Arlene Lee



Meg Bilicki



**The We Care Fund for
Medical Innovation and Research Committee
2018-2019 Committee Members**

Arlene Lee, Chair

- Carrie Raymond Bedore
- Betsy Evans
- Holly Gamblin
- Sandra Hansen Harsh
- Ruth Joachim, MA
- Jennifer La Macchia
- Joel S. Lee
- Liza Longhini
- Mary Ann Miller
- Susan Angel Miller
- Brian Neuwirth
- Abigail Barnes Schroeder, PA-C
- Maggy Schultz
- Aaron Valentine
- Jennifer L. Vetter
- Mark S. Young

Staff: Meg M. Bilicki, Gina Vrtochnick



**Physicians and Scientists who have served on the
We Care Scientific Review Committee
2013-2018**

- Karen J. Brasel, M.D.
- David C. Cronin, III, M.D., Ph.D.
- John C. Densmore, M.D.
- Douglas B. Evans, M.D.
- T. Clark Gamblin, M.D., M.S., M.B.A.
- Jill A. Gershan, Ph.D.
- Aron Geurts, Ph.D.
- David M. Gourlay, M.D.
- David D. Gutterman, M.D.
- Viktor Hraska, M.D., Ph.D.
- Tammy Lyn Kindel, M.D., Ph.D.
- Muthusamy Kunnimalaiyaan, Ph.D.
- Cheong Jun Lee, M.D.
- Gwen Lomberk, Ph.D.
- Qing Miao, Ph.D.
- Aoy Tomita Mitchell, Ph.D.
- Kirkwood A. Pritchard, Jr., Ph.D.
- Hallgeir Rui, M.D., Ph.D.
- Vera Tarakanova, Ph.D.
- Susan Tsai, M.D., M.H.S.
- Kalpa Vithalani, Ph.D.
- Amy Wagner, M.D.
- Michael A. Zimmerman, M.D.



14 We Care Grant Recipients

2017 Awards

T. Clark Gamblin, M.D., M.S., M.B.A., Stuart D. Wilson Professor and Chief, Division of Surgical Oncology
Amanda L. Kong, M.D., M.S., Associate Professor, Division of Surgery Oncology
Viktor Hraska, M.D., Ph.D., Professor and Chief, Pediatric Congenital Cardiac Surgery

2016 Awards

John E. Baker, Ph.D., Professor, Division of Cardiothoracic Surgery
Michael James, Ph.D., Assistant Professor, Division of Surgical Oncology
Susan Tsai, M.D., M.H.S., Associate Professor, Division of Surgical Oncology
Amy Wagner, M.D., Associate Professor, Division of Pediatric Surgery

2015 Awards

Kirkwood A. Pritchard, Jr., Ph.D., Professor, Division of Pediatric Surgery
Johnny C. Hong, M.D., Mark B. Adams Professor of Surgery, Chief, Division of Transplant Surgery
Muthusamy Kunnimalaiyaan, Ph.D., Assistant Professor, Division of Surgical Oncology

2014 Awards

Qing (Robert) Miao, Ph.D., Associate Professor, Division of Pediatric Surgery
Timothy J. Ridolfi, M.D., Assistant Professor, Division of Colorectal Surgery

2013 Awards

John C. Densmore, M.D., Associate Professor, Division of Pediatric Surgery
Susan Tsai, M.D., M.H.S., Associate Professor, Division of Surgical Oncology



2018 Faculty Seed Grants
The We Care Fund for Medical Innovation and Research Committee
is requesting applications for seed funding for
Department of Surgery faculty

REQUEST FOR APPLICATIONS

Two grants will be awarded: one grant for \$150,000, distributed over two years, and one grant for \$50,000, distributed over one year.

KEY DATES

- | | |
|---|--|
| • Request for Applications (RFA) Release Date | Monday, February 12, 2018 |
| • eBridge application due in Office of Grants and Contracts | <i>No Later Than</i> – April 18, 2018 |
| • Emailed application due to We Care Fund | <i>No Later Than</i> – April 25, 2018 (by 5pm) |
| • Award Notifications | July 16, 2018 |
| • Anticipated Start Date | September 1, 2018 |

OVERVIEW

The mission of the We Care Fund is to use contributions made available by the philanthropic community to support Department of Surgery faculty who are creating innovative therapies and clinical programs that benefit patients in Wisconsin and throughout the world. Proposals should demonstrate the importance of innovation and discovery to advance science and clinical care of patients. Any level of science is eligible for funding; preference will be given to those proposals that effectively articulate a translational theme even if the bedside application may be in the future. Proposals may include innovative basic science or clinical research projects.

New Faculty (Since January 2017)

Division	Faculty Name
Cardiothoracic Surgery	David Joyce, M.D.
	Lyle Joyce, M.D., Ph.D.
	Paul Pearson, M.D., Ph.D.
	Lucian Durham, M.D.
General Surgery	Kathleen Lak, M.D.
Research	Gwen Lomberk, Ph.D.
	Raul Urrutia, M.D.
Trauma and Acute Care Surgery	Joshua Hunt, Ph.D., M.S.
Trauma and Acute Care Surgery	Marc de Moya, M.D.
Trauma and Acute Care Surgery	Anuoluwapo Elegbede, M.D., M.S. (Start date 9/2018)
Vascular Surgery	Abby Rothstein, M.D. (Start date 9/2018)

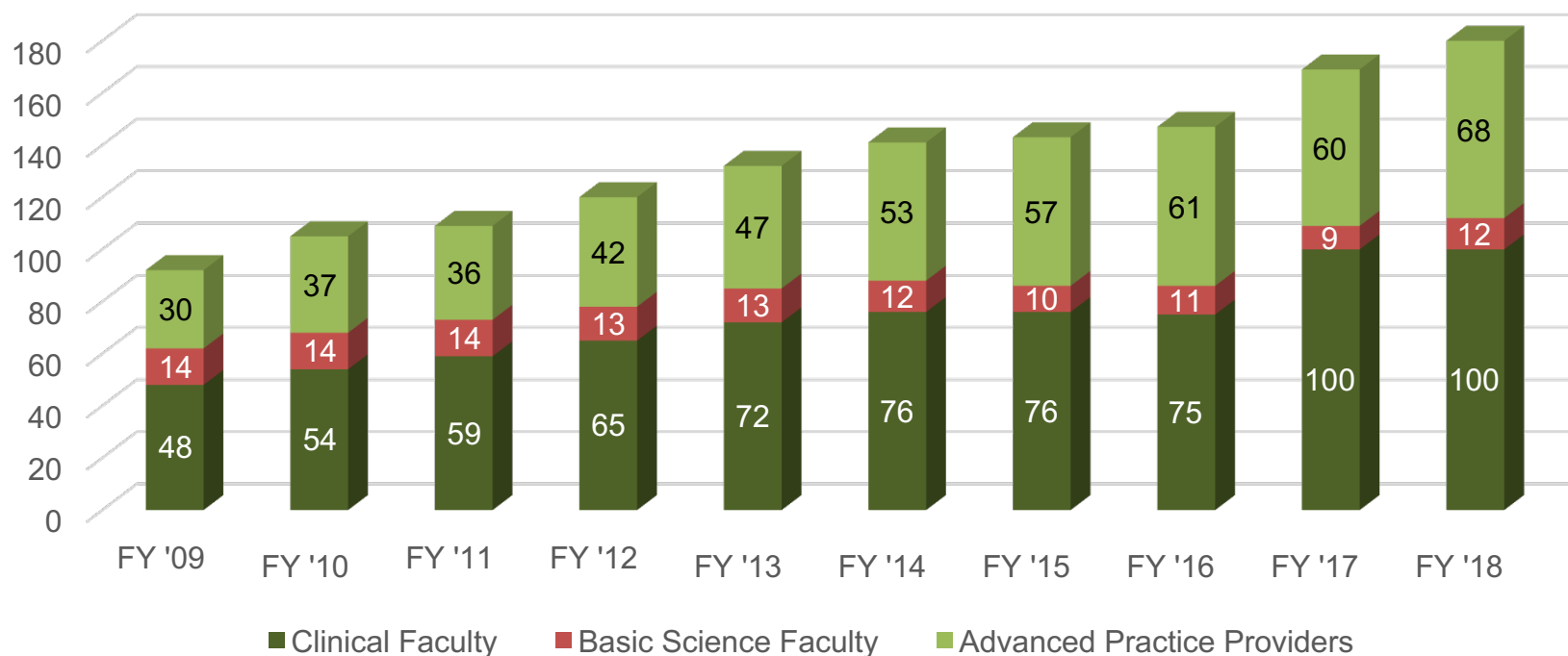
It Takes a Village

- Faculty: 110 vs. 69 (FY '09)
 - 100 clinical faculty (increase of 50 MDs and Psychologists since 2009) (100% increase)
- Added one additional categorical resident position
- APPs: 63 vs. 28 (FY '09) 10 additional APPs being recruited. (160% increase since 2009)
- Volunteer Faculty – 94
- Staff – 223



Faculty and Nurse Practitioner/ Physician Assistant Growth

Faculty and PA/NP Positions



Reasons for faculty departures from an academic medical center: a survey and comparison across faculty lines

Sabine C. Girod^{1*}, Magali Fassiotto², Roseanne Menorca¹, Henry Etzkowitz³ and Sherry M Wren¹

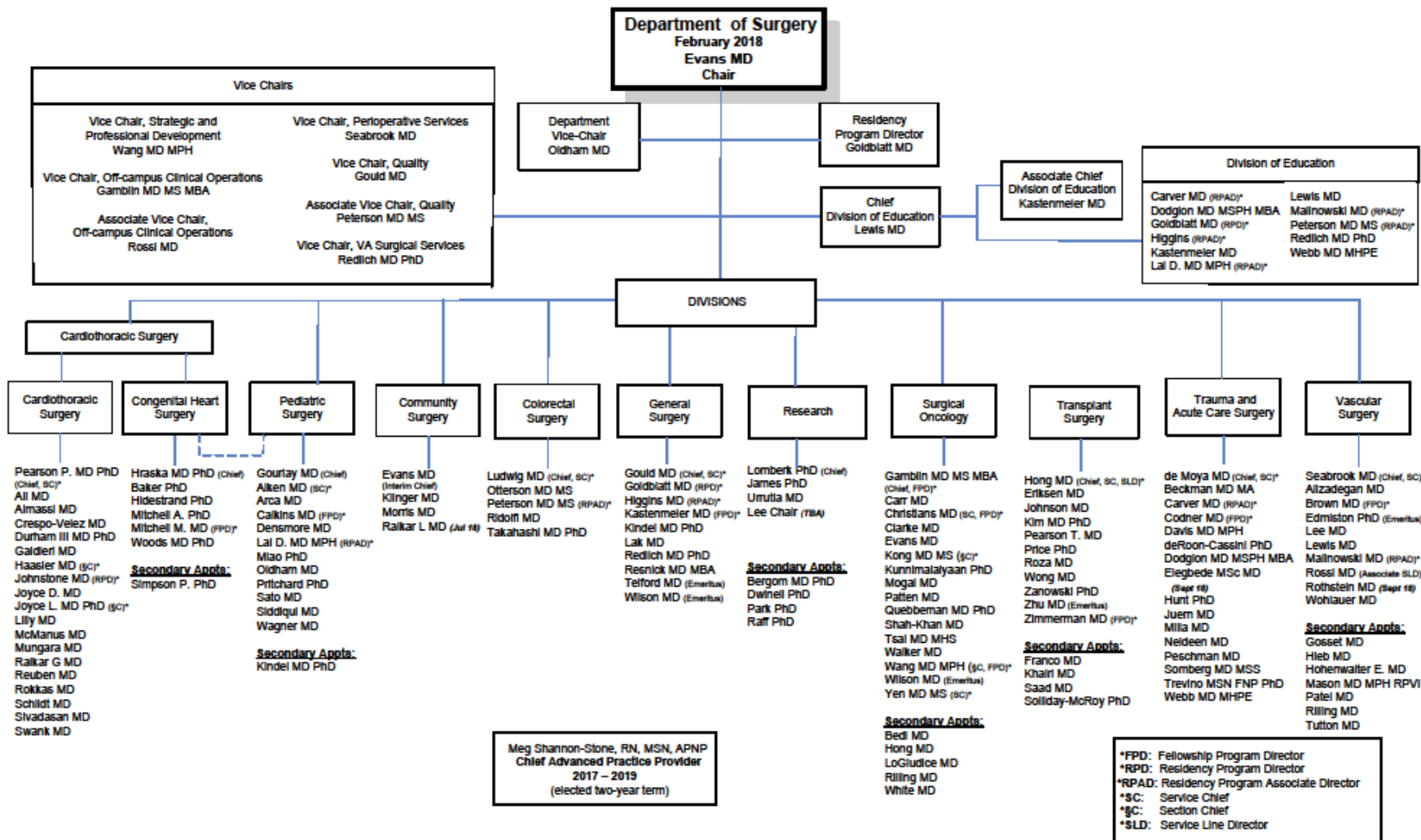
Table 5 Percentage of respondents who indicated the following factors were primary reasons for leaving SOM, in authors' 2015 survey of faculty who left SOM between 1999 and 2014

	n (%)		
	All respondents (n = 85)	Clinical Line (n = 47)	Non-Clinical (n = 38)
Professional and/or advancement opportunities**	56 (66%)	25 (53%)	31 (82%)
Salary	46 (54%)	28 (60%)	18 (47%)
Personal/family reasons	34 (40%)	21 (45%)	13 (34%)
Issues with support (recognition, appreciation, etc.)	29 (34%)	17 (36%)	12 (35%)
Issues with research support	24 (28%)	16 (34%)	8 (21%)
Issues with clinical support**	13 (15%)	13 (28%)	0 (0%)
Geographic location	13 (15%)	8 (17%)	5 (13%)
Issues with diversity	3 (4%)	2 (4%)	1 (3%)
Discrimination	4 (5%)	3 (6%)	1 (3%)
Other	18 (21%)	8 (17%)	10 (26%)

[†] $p < .10$ * $p < .05$ ** $p < .01$ for Pearson's chi-square test of independence between Clinical Line and Non-Clinical Line

BMC Medical Education

Organizational Structure Changes



G:\Administration\Wendy Shared Folder\EVANS\Organization Charts

The Department of Surgery: New Organizational Structure

To advance the missions of Academic Achievement, Professional Development, and Clinical Excellence



**Vice Chair -
Off Campus Clinical Operations**
T. Clark Gamblin, MD, MS, MBA
Professor, Surgical Oncology



**Associate Vice Chair -
Off Campus Clinical Operations**
Peter J. Rossi, MD
Associate Professor, Vascular Surgery



**Vice Chair -
Strategic & Professional Development**
Tracy S. Wang, MD, MPH
Associate Professor, Surgical Oncology



Vice Chair - Perioperative Services
Gary R. Seabrook, MD
Professor, Vascular Surgery



Vice Chair - Quality
Jon C. Gould, MD
Professor, General Surgery



Associate Vice Chair - Quality
Carrie Y. Peterson, MD, MS
Assistant Professor, Colorectal Surgery



Vice Chair - Veterans Affairs
Philip N. Redlich, MD, PhD
Professor, General Surgery



Chief, Division of Education
Brian D. Lewis, MD
Professor, Vascular Surgery



Associate Chief, Division of Education
Andrew S. Kastenmeier, MD
Associate Professor, General Surgery

Department of Surgery Community Sites

Froedtert & MCW locations

St. Joseph's Hospital, West Bend	1
Community Memorial Hospital, Menomonee Falls	2
Froedtert & MCW, Milwaukee	3
Columbia St. Mary's	4
St. Mary's Ozaukee	5
St. Francis Hospital	6
Elmbrook Hospital	7
Town Hall Clinic	12
Mequon Health Center	13

MCW Surgery locations

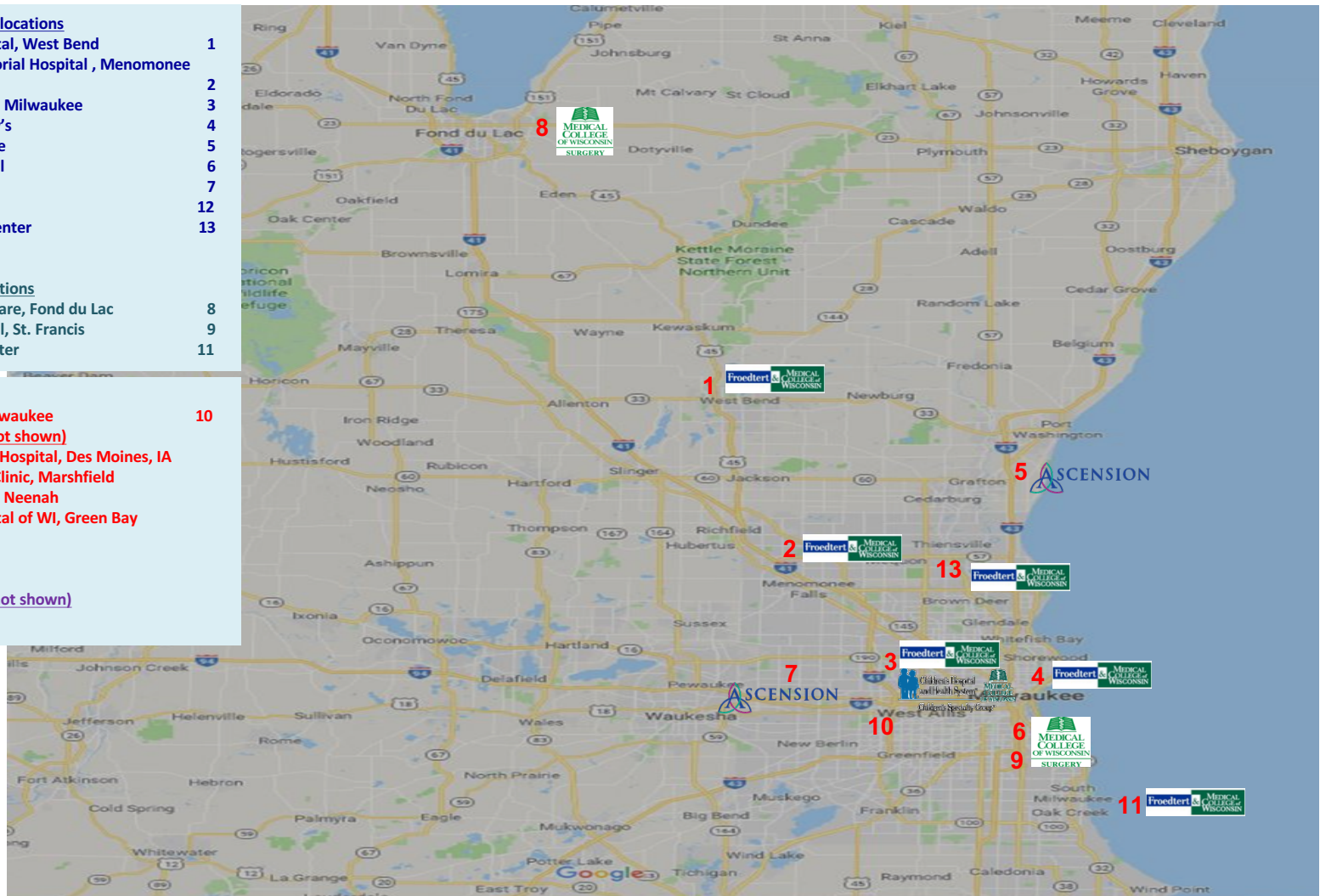
Agnesian Health Care, Fond du Lac	8
St. Francis Hospital, St. Francis	9
Drexel Cancer Center	11

CSG locations

CSG Surgery, Milwaukee	10
CSG locations (not shown)	
Blank Children's Hospital, Des Moines, IA	
The Marshfield Clinic, Marshfield	
Fox Valley Clinic, Neenah	
Children's Hospital of WI, Green Bay	
Delafield	

MCP locations (not shown)

Bellin Hospital

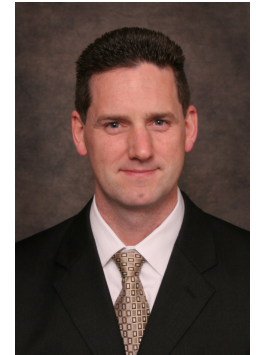


Many Sites of Practice – an added challenge

- Practice Sites
 - MCP – 24
 - 9 Hospitals (Ascension (4), FMLH, CMH, SJH, VAMC, St. Agnes)
 - 3 Ambulatory surgery centers
 - 12 Ambulatory clinics including Drexel, Moorland, Tosa Health Center and others based at the medical centers and hospitals
 - 2 new future sites (Mequon, Froedtert South)
 - CSG – 17
 - 7 Hospitals (CHW, CSM, St Joseph, St Luke's, Mt. Sinai, Marshfield, Blank)
 - 1 Ambulatory surgery center
 - 9 Ambulatory clinics

Organizational Structure

- T. Clark Gamblin, M.D., M.S., M.B.A.
Vice Chair, Off-campus Clinical Operations
- Peter J. Rossi, M.D.



Associate Vice Chair, Off-campus Clinical Operations

- Identify clinical practice opportunities and advocate for department inclusion
- Develop, implement and monitor strategic planning for department off-campus activities
- Monitor off campus performance
- Participate in recruitment of surgeons / APPs with offsite practices

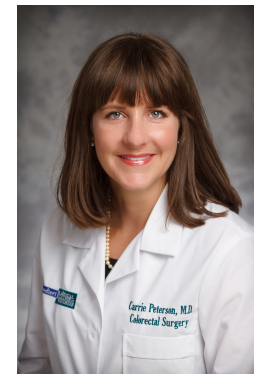
Organizational Structure

- Gary R. Seabrook, M.D.
Vice Chair, Perioperative Services
 - Coordinate IPP with Service Line strategic and operational initiatives
 - Co-manage all aspects of the day-to-day operations and patient flow on the Integrated Procedural Platform at Froedtert Hospital
 - Implement policies regarding MD and RN practice in the OR environment
 - Manage clinical resources with standardization of supplies and equipment
 - Measure key quality and safety indicators against national benchmarks



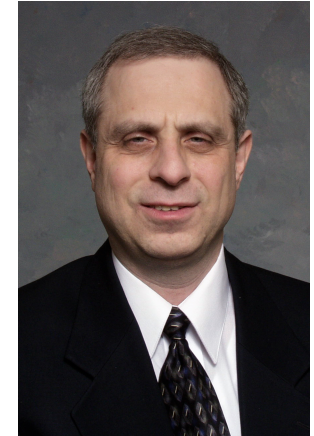
Organizational Structure

- Jon C. Gould, M.D.
Vice Chair, Quality
- Carrie Y. Peterson, M.D., M.S.
Associate Vice Chair, Quality
 - Develop and manage all programs related to clinical quality to include process improvement, safety and patient outcomes
 - Resource to General Surgeons at other Froedtert Health hospitals
 - NSQIP, Readmissions
 - Colon SSI, CLABSI, CAUTI, C. Diff.
 - Department Specific Quality Metrics
 - Other



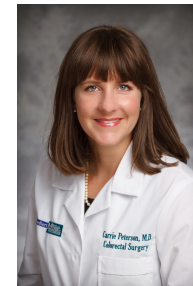
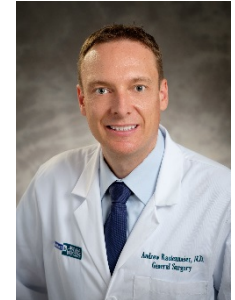
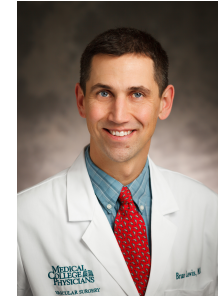
Organizational Structure

- Phillip Redlich, M.D., Ph.D.
Vice Chair, Zablocki VA Medical Center
Surgeon-in-Chief, VA Medical Center
 - Leads all surgical specialties at the VAMC
 - Represents the Department of Surgery at the VA



Organizational Structure

- Brian D. Lewis, M.D.
Chief, Division of Education
- Andrew S. Kastenmeier, M.D.
Associate Chief, Division of Education
 - Resident curriculum and medical student education
 - M3 & M4 Clerkship Director - Dr. Kastenmeier
 - Associate Clerkship Director - Dr. Patten
 - Associate Program Directors
 - Drs. Carver, Higgins, Lal, Malinowski and Peterson



Organizational Structure

- Gwen Lomberk, Ph.D.
Chief, Division of Research
 - Advocacy for research and academic achievement
 - Advance a culture of innovation and discovery
 - Importance of manuscript and grant submission
 - Leads research education
 - Participates in faculty and resident mentoring

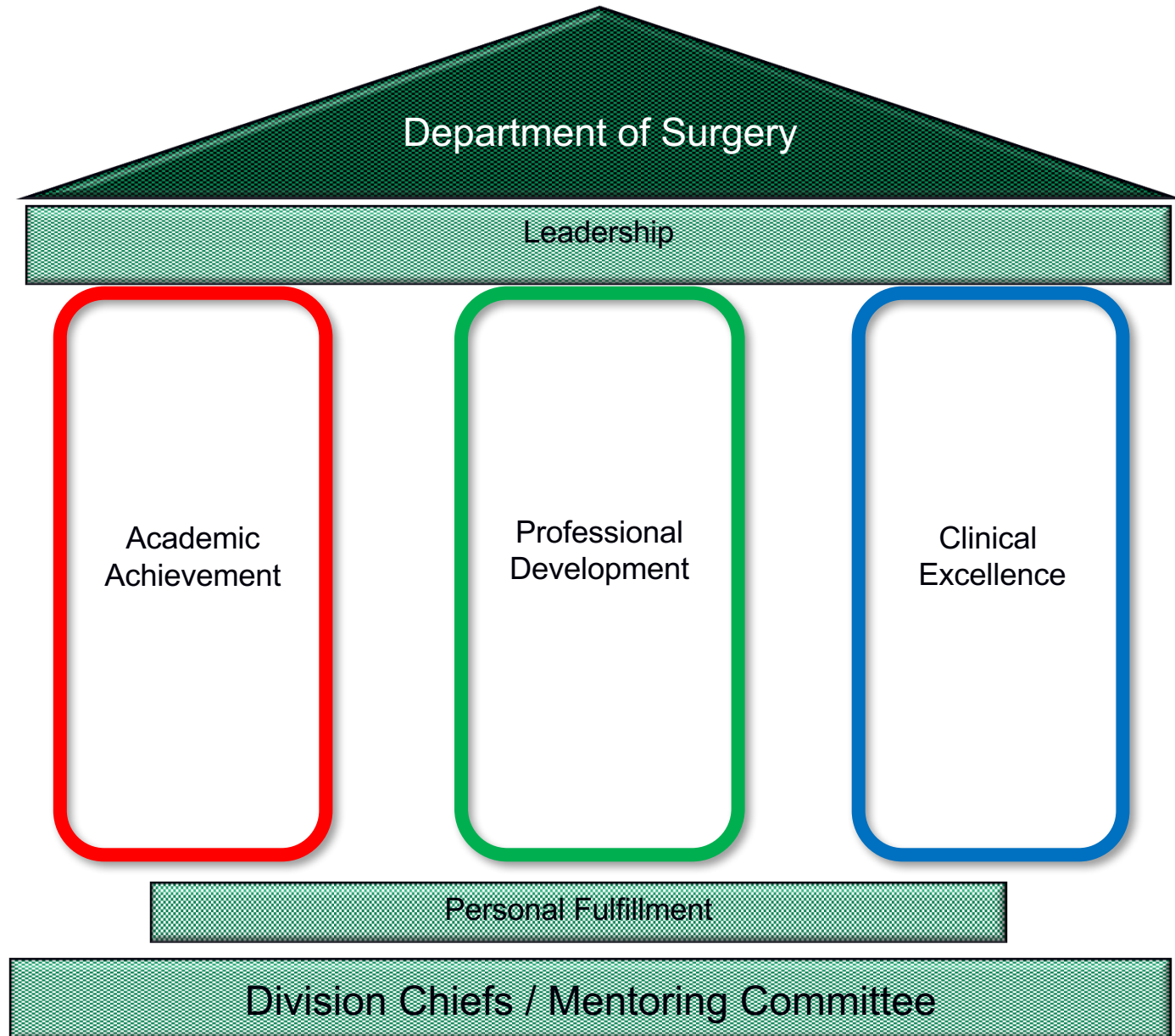


Organizational Structure

- Tracy S. Wang, M.D., M.P.H.
Vice Chair, Strategic and Professional Development
 - Professional Development
 - faculty recruitment: overarching culture of diversity and academic achievement – enhance the recruitment process
 - career development, leadership, engagement (to include APPs)
 - mentoring with spec emphasis on mid-career faculty
 - Strategic Development
 - Media, CME, Grd Rnds
 - Quasi Endowment



Three Pillars of Mentoring



Mentoring Committee

Douglas Evans, M.D.

Kellie Brown, M.D.

Terri deRoos-Cassini, Ph.D.

David Gourlay, M.D.

Brian Lewis, M.D.

Gwen Lomberg, Ph.D.

Mary Otterson, M.D., M.S.

Philip Redlich, M.D., Ph.D.

Ryan Spellecy, Ph.D.

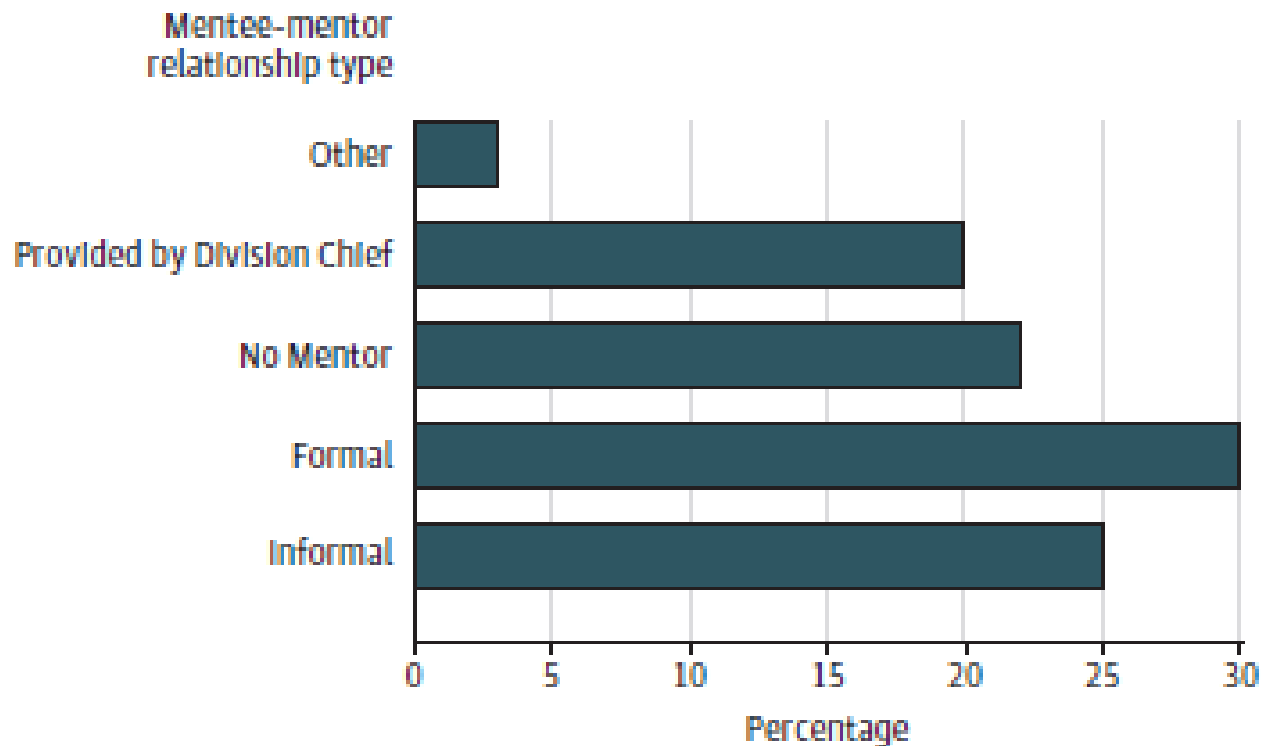
Tracy Wang, M.D., M.P.H.

Travis Webb, M.D., M.P.H.E.

Michael Zimmerman, M.D.

Characterization of Mentorship Programs in Departments of Surgery in the United States

Figure 1. Types of Pairing of Mentees With Mentors

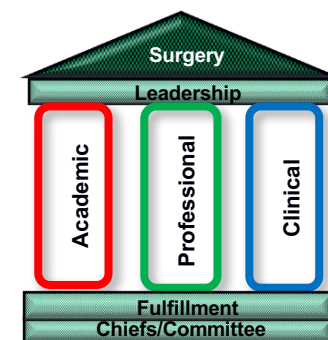


Initial Scope of the Mentoring Committee

Academic Achievement Pillar Mnemonic

WIN

- **W:** **W**hat are the 3- and 5-year goals?
- **I:** **I**mportance of the CV (abstracts, presentations, manuscripts, etc.) and Portfolio (if applicable), as defined steps to support promotion
- **N:** **N**ational/regional societies to join; relationships to build, committee and leadership opportunities to attain



Resident Research Mentoring

knowledge changing life

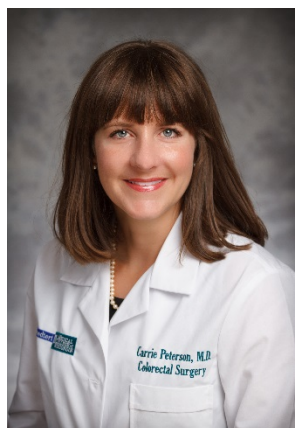
Welcome to the Division of Research



Gwen Lomberg, PhD

Chief, Division of Research

Director, Basic Research in the Department of
Surgery



Carrie Y. Peterson, M.D., M.S.



*Innovation, discovery, and a deep commitment to each other
guide our daily pursuit of new knowledge and better treatments
for the many patients who are counting on us
to make tomorrow better than yesterday.*

*Wishing you a wonderful holiday season
and a happy and healthy 2018.*

Douglas B. Evans, M.D.
Chair, Department of Surgery



Leading the Way for the Department of Surgery: Our 2017–2018 Chief Residents
Drs. Daniel Davila, William Ragalie, Joseph Helm III, Fadwa Ali, Tanner Spees
Photographed with their favorite frequent-flyer program, the Flight for Life helicopter.

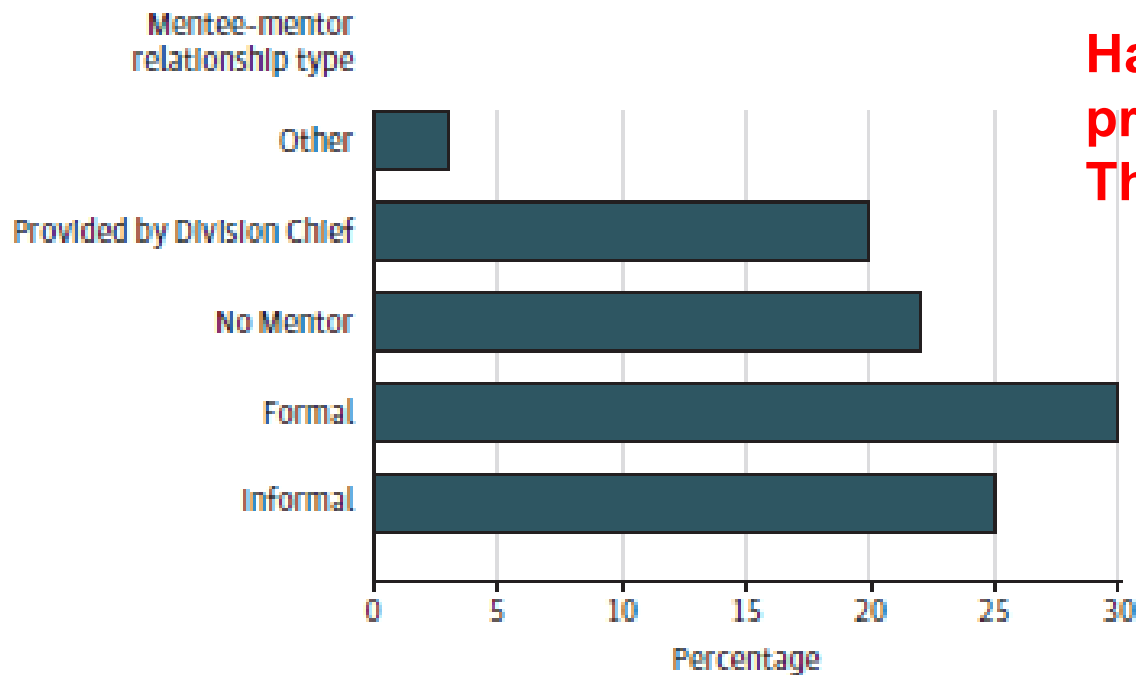


Cover photo of the Milwaukee Art Museum's Quadracci Pavilion which was designed by architect Santiago Calatrava and opened in 2001. The photograph was taken by **Yong-ran Zhu, M.D., Emeritus Associate Professor of Surgery, Division of Transplant Surgery**, looking due east on an icy and chilly Lake Michigan. Although we are looking east, this scene is similar to one from the famous “True North” produced by pioneering film and video artist Isaac Julien which was displayed at the Milwaukee Art Museum in 2012. Although Julien’s “True North” referred to the North Pole and was filmed in Iceland, “True North” has another meaning for us in medicine and especially surgery. Our patients are often anesthetized and paralyzed, a time when they rely on us to be perfect and amass all of the attributes embodied in what we refer to as one’s “True North.” In the Department of Surgery, the principles of “True North” are reinforced daily, keeping our internal compass focused on honesty, integrity, and a dedication to those who have trusted us to make them better.

 @MCWSurgery |  MCW Medical Moments |  /MCWSurgery | mcw.edu/surgery

Characterization of Mentorship Programs in Departments of Surgery in the United States

Figure 1. Types of Pairing of Mentees With Mentors



**Having a mentoring
program is not enough:
The program has to work!**

Monthly Surgery Research Conference (2nd Wednesday)



A Program for Promoting Clinical Scholarship in General Surgery

Madhukar S. Patel, MD, MBA, ScM,^{,†,‡} David Tomich, MD,^{†,‡} Tara S. Kent, MD, MS,^{†,‡} Elliot L. Chaikof, MD, PhD,^{†,‡,§} and James R. Rodrigue, PhD^{†,‡,||}*

TABLE 1. Clinical Scholarship Program (CSP) Learning Objectives

- Understand the importance of scholarly activity
- Increase knowledge of study design and clinical research methodology
- Increase awareness of institutional and national clinical databases
- Learn how to apply basic statistical methods to analyze research data
- Increase awareness of the ethical issues in conducting clinical research
- Learn the requirements for the protection of human research participants
- Learn the institutional review board (IRB) processes, procedures, and policies
- Disseminate research findings to the broader scientific community

Didactics

- Lecture series on five core research competencies: (1) study design, (2) biostatistics, (3) communicating research findings, (4) ethics and regulatory issues, and (5) grant writing
- Active participation in the department's weekly clinical research meeting
- Attend laboratory meetings with faculty research mentor

Research Project

- Implement a clinical research project
- Direct faculty research mentorship at least monthly while clinically active and throughout the dedicated 1-month research rotation
- Prepare an abstract for regional and/or national presentation as well as submit a manuscript for peer-reviewed publication

Talent is here

Research/clinical
mentoring will
return huge
dividends!



Department of Surgery

General Surgery Resident Roster

2017 - 2018

~PGY I~



Bichanich, Miles
Plastics



Chow, Bonnie



Dadhich, Pranav
Urology



Gibson, Emma



Goetz, Andrew



Guo, Meng
Plastics



Herren, Josi
Preliminary



Lake, Zoe
Rural



Madion, Jr.,
Matthew



Maniar, Viraj
Urology



Medeiros, Robert
Urology



Park, Sandra



Redifer, Kaita
Preliminary



Smith, Nathan



Thaji, Samih

~PGY II~



Boehm, Lucas
Plastics



Bowder, Alexis



Chapman, Kayla



Childs, Keona



Haberman, Kathryn



Krepline, Ashley



Rivedal, David
Plastics



Traudt, Elizabeth



Wilkinson, K. Hope

~PGY III~



Bence, Christina



Berger, Nicholas



Cain, Michael



Hu, Katherine



Jayakrishnan,
Thejus



Kohler, Kaleb



Mitchell, Rebecca



Strong, Erin

~PGY IV~



Dux, Justin



Kugler, Nathan



Landisch, Rachel



Larrieux, Gregory



Masnyj, Stephen



McMillan, Robert

~PGY V~



Ali, Fadiwa



Davila, Daniel



Helm, Joseph, III



Ragalie, William



Spees, Tanner

CC Fellowship



Fehring, Charles

~Research~



Barnes, Chad



Blank, Jacqueline



Boyle, Kelly



Clark, Lindsey



Marcus, Rebecca



Education/Residency Update



Matthew Goldblatt, M.D.; Theresa Krausert; Lisa Olson; Marilyn Zarka, M.B.A.

- Obtained State of Wisconsin Rural track grant
 - Matched Zoe Lake who will go to Wausau in April
- Successful education retreat
- Completed residency video
https://www.youtube.com/watch?v=D8FFSc1_y3s
- Successful residency interview season with great candidates
- PGY 1-2 Wellness initiative led by Dr. Christopher Davis
- Most importantly, wonderful people

2018 CME Programs

Program	Program Champion(s)	Date
Endocrine Surgery Symposium	Dr. Wang Dr. Yen	February 23
2018 GI Symposium	Dr. Mogal	May 4
Atlanta Pancreas Cancer Symposium	Dr. Evans Dr. Tsai	May 18
Acute Care Surgery Symposium	Dr. de Moya	June 4-6
Solid Organ Transplantation Symposium	Dr. Hong	August 21-23
Society of Asian Academic Surgeons Annual Meeting	Dr. Wang Dr. Lee	September 27-28

LEADING THE WAY

WINTER 2018 • VOLUME 10, NUMBER 1



DEPARTMENT OF
SURGERY



iHeartRadio: The Word on Medicine



#MCWmedicalmoments



@MCWSurgery



MCWSurgery

www.mcw.edu/surgery

From the Chair | Douglas B. Evans, MD

Team Work Makes the Dream Work

The Department of Surgery has recently undergone a reorganization of roles and responsibilities to advance our three missions (education, research, clinical care) and capitalize on the talent and unique expertise of our growing faculty. Stimulated initially by an insightful external consultant and refined with internal discussion at all levels of leadership, for the first time in the history of this department we have added program-specific Vice Chair positions. This is in addition to current leadership positions including Dr. Keith Oldham, Vice Chair of the department, Dr. Matt Goldblatt, General Surgery Residency Program Director and our existing team of talented Division Chiefs. In addition, after 12 years of service to the Division of Education, Dr. Phil Redlich will step down as Division Chief due to his appointment as Vice

Chair and Surgeon-in-Chief for the Zablocki VA Medical Center. We have every confidence that these new leadership positions will create additional clinical opportunity, make MCW Surgery of the best possible quality, bring unmatched efficiency to our clinical services/operating room, and enhance faculty and resident career development with an innovative and energetic focus on how to make all of us the best we can be. Our commitment to faculty development and resident education will be unmatched among academic departments in this country. As illustrated in the graphic (thank you Phil Redlich and our Mentoring Committee), while everyone shares the three pillars, our approach to career success is a personalized medicine approach (thank you Raul Urrutia). The goals within each pillar are likely unique to every faculty member and resident; understanding this will provide the navigation needed to achieve a successful career – as defined by the exceptional talents, diverse interests, and wide-ranging accomplishments of the 100 faculty and 47 residents and fellows. Individual success will be amplified when achievements are added across the department – Team work will make the Dream work! Please join me in congratulating the faculty who have assumed new leadership roles:

- Vice Chair for Off-Campus Clinical Operations (Dr. Clark Gamblin; Associate Vice Chair, Dr. Peter Rossi)
- Vice Chair for Perioperative Services (Dr. Gary Seabrook)
- Vice Chair for Quality (Dr. Jon Gould; Associate Vice Chair, Dr. Carrie Peterson)
- Vice Chair for Strategic and Professional Development (Dr. Tracy Wang)
- Vice Chair for VA Surgical Services (Dr. Philip Redlich, Surgeon-in-Chief)
- Chief, Division of Education (Dr. Brian Lewis; Associate Chief, Dr. Andrew Kastenneier) •

Three Pillars of Career Development

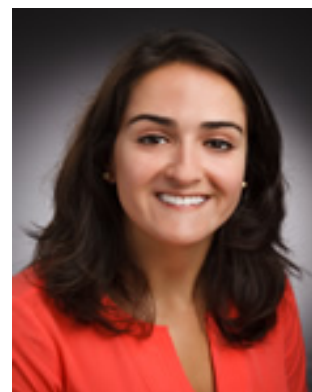


IN THIS ISSUE:

Bariatric Surgery as a Treatment for Heart Failure	2
Announcing the 2017 We Care Fund Grantees	5
The Optimization of Cardiopulmonary Bypass to Support Cerebral and Somatic Perfusion During Arch Reconstruction	6
Mitochondrial Telomerase as a Regulator of Mitochondrial Damage and Secondary Messengers in Chemotherapy-Induced Microvascular Dysfunction	8
Searching for New Therapy in Hepatocellular Carcinoma	10

Division of Research: Committed to Scientific Discovery and Making Tomorrow Better Than Yesterday	12
The Quality Minute: An Addition to Surgical Morbidity and Mortality Conference	14
Global Surgery: Cube-US Trauma Collaborative	16
Leading the Way: Honors and Awards	18
Faculty Listing	19
Mark Your Calendars	20

MCW Surgery
knowledge changing life



Rana M. Higgins, M.D.
Editor



Heidi Brittnacher
Editor



Amy J. Wagner, M.D.
Editor, 2013 – 2017

Employee Service Awards

Thank you for your service to MCW and the Department of Surgery

Kelly A. Kristbaum, A.P.N.P.	Transplant Surgery	5 years
Alicia Martin	Transplant Surgery	5 years
Ruth M. Swedler	Pediatric Surgery	5 years
Lynn Fojut	Transplant Surgery	10 years
Anne L. Laulederkind, R.N.	Administration, Clinical Research	10 years
Rebecca M. Lucchesi	Transplant Surgery	10 years
Joanne D. Mattingly, A.P.N.P.	Surgical Oncology	10 years
Lisa R. Olson	Administration, Education	10 years
Meghann J. Sytsma	Pediatric Surgery	10 years
Lisa A. Graber, A.P.N.P.	Surgical Oncology	15 years
Sarah J. Lundeen, A.P.N.P.	Colorectal Surgery	15 years
Colleen Trevino, F.N.P., Ph.D.	Trauma and Acute Care Surgery	15 years
Barbara J. Alivo, R.N.	Cardiothoracic Surgery	20 years
Renee B. McCoy	Surgical Oncology	20 years
Lynda M. Snyder	General Surgery	30 years
Elizabeth A. Krzywda, A.P.N.P.	Surgical Oncology	35 years

Thank you to Team Surgery!

