

# 2019 Scientific Retreat

FRIDAY, APRIL 26, 2019

Together, Taking on Cancer's Toughest Challenges



## CANCER PREVENTION & OUTCOMES

[mcw.edu/departments/cancer-center](http://mcw.edu/departments/cancer-center)

@MCWCancerCenter

# 2019 Scientific Retreat

FRIDAY, APRIL 26, 2019



Together, Taking on Cancer's Toughest Challenges

[mcw.edu/departments/cancer-center](http://mcw.edu/departments/cancer-center)

@MCWCancerCenter



## PROGRAM OVERVIEW

Joan Neuner, MD, MPH

# CPO PROGRAM CO-LEADERS



## **Ann Nattinger, MD, MPH**

Senior Associate Dean for Research

Lady Riders Professor of Breast Cancer Research

Professor of Medicine

- Program Theme Focus: To improve cancer outcomes and reduce cancer disparities.
- Expertise: Breast cancer quality of care, survivorship care
- Federal funding since 1991



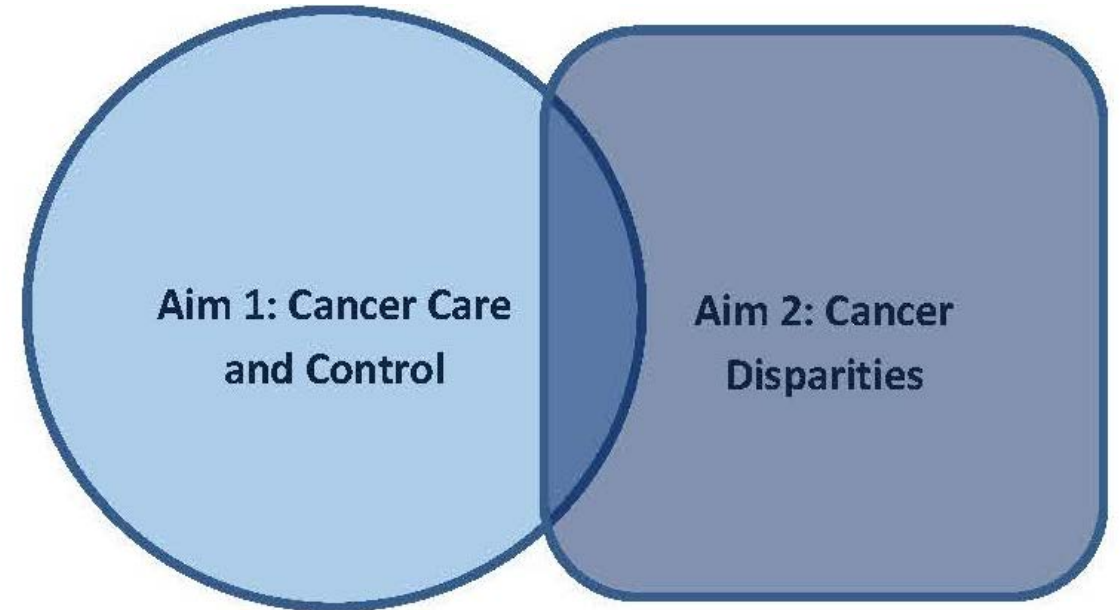
## **Joan Neuner, MD, MPH**

Associate Professor, Department of Medicine

- Program Theme Focus: Cancer disparities
- Expertise: Medication adherence, pharmaceutical policy and disparities
- Federal funding since 2003

# CPO PROGRAM

- Interrelated themes of improving cancer control and reducing cancer disparities
  - To identify and address processes that affect cancer control, such as cancer care access, quality and value.
  - To determine mechanisms of cancer disparities and develop novel interventions.
  - Capitalizes on historic MCW strengths in cancer treatment delivery and survivorship, and strong collaborations studying obesity, exercise, and screening

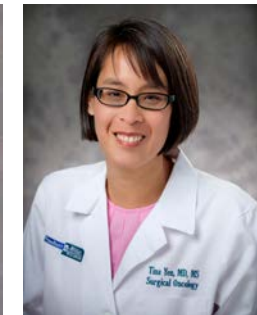


# Surgical volume is associated with lower morbidity surgical treatment

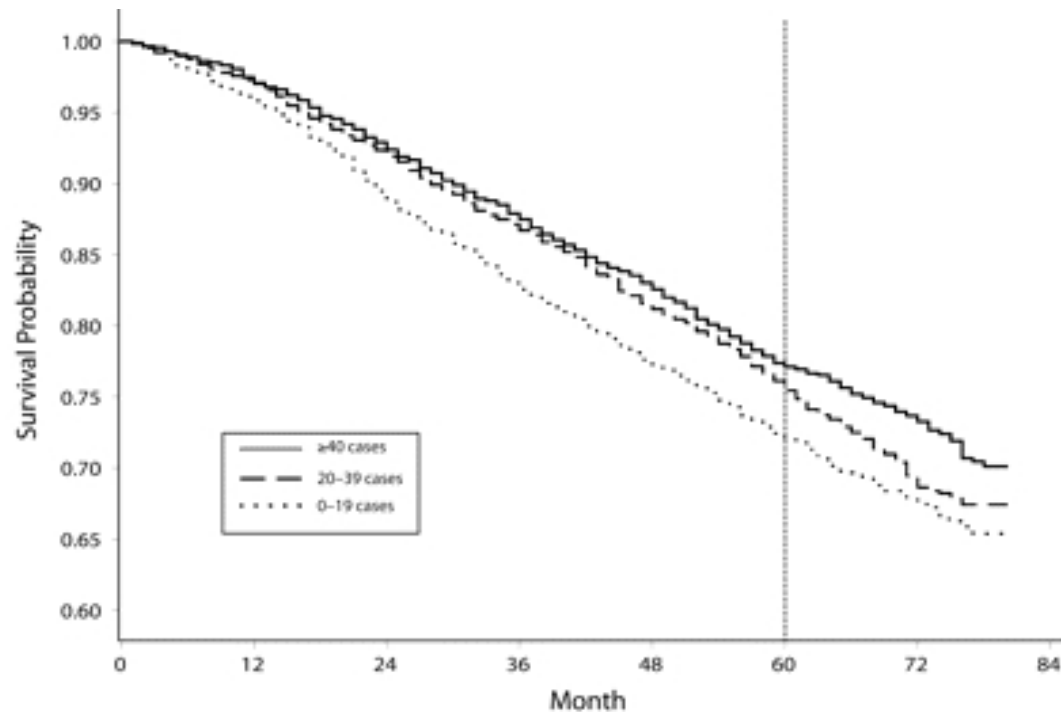
	SLNB Only (N = 3889) (51%)	SLNB to ALND (N = 3015) (39%)	ALND Only (N = 782) (10%)	Overall Cohort (N = 7686)
No. nodes removed				
Mean (SD)	2.8 (2.5)	4.4 (4.5)	11.7 (6.8)	4.3 (4.7)
Median (Q1–Q3)	2 (1–3)	3 (2–5)	11 (7–16)	3 (1–5)
Lymph node category [n (%)]				
1–5	3535 (91)	2276 (76)	150 (19)	5961 (78)
6–10	280 (7)	441 (15)	207 (26)	928 (12)
11–15	56 (1.4)	196 (6)	211 (27)	463 (6)
16+	18 (0.5)	102 (3)	214 (27)	334 (4)
5-year estimated lymphedema probability (%)	11.0	14.1	28.2	13.9
Estimated excess lymphedema probability (%) <sup>*</sup>	0	3.1	17.2	2.9
No. estimated lymphedema patients <sup>†</sup>	428	425	221	1068
No. estimated excess lymphedema patients <sup>‡</sup>	0	93	135	223

<sup>\*</sup>Estimated excess lymphedema probability = lymphedema probability minus the baseline 11.0% estimated lymphedema probability of SLNB only group.  
<sup>†</sup>Number of estimated lymphedema patients = total number of patients × estimated lymphedema probability.  
<sup>‡</sup>Number of estimated excess lymphedema patients = total number of patients × estimated excess lymphedema probability.  
 ALND indicates axillary lymph node dissection; Q, quartile; SLNB, sentinel lymph node biopsy.

MEDICAL CARE



# L Pezzin, A Nattinger Collaboration Physician/Hospital Breast Cancer Treatment Volumes and Morbidity



Beginning examination of NY state surgeon volume regulations on mortality

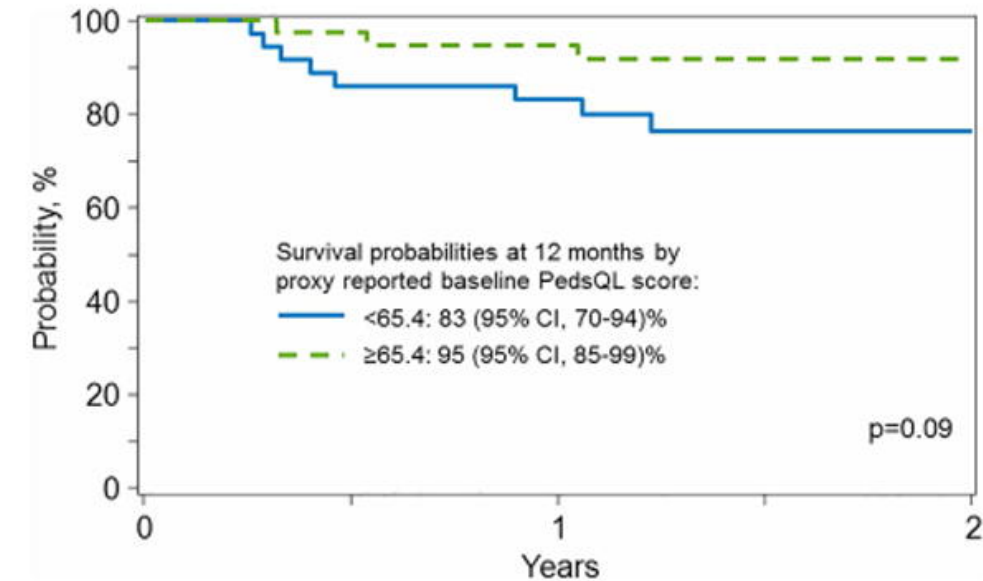
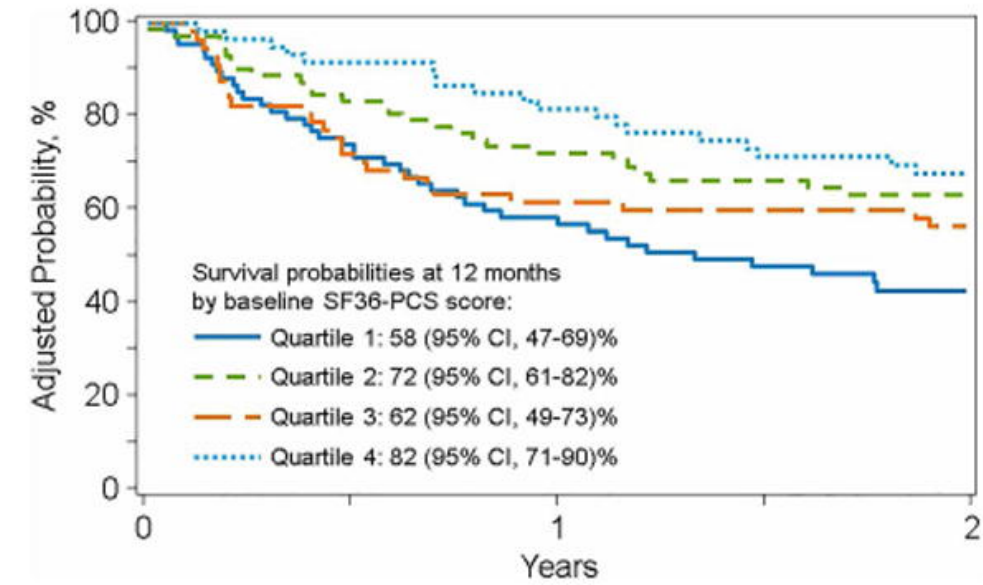


K. Flynn (CPO) and E. Atallah (DDT) Collaboration  
Discontinuation of TKIs

- *I want to get off of [imatinib] just to feel normal again.... I think the nausea and the energy are the two things that are very annoying. [Patient 5]*
- *I would be able to stay on [imatinib] because I know what the side effects are, and I can certainly live with them. [Patient 12]*

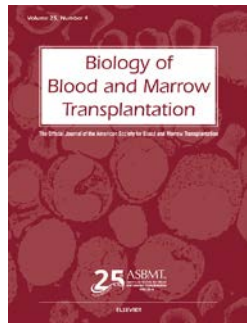


# Patient reports independently predict survival after BMT

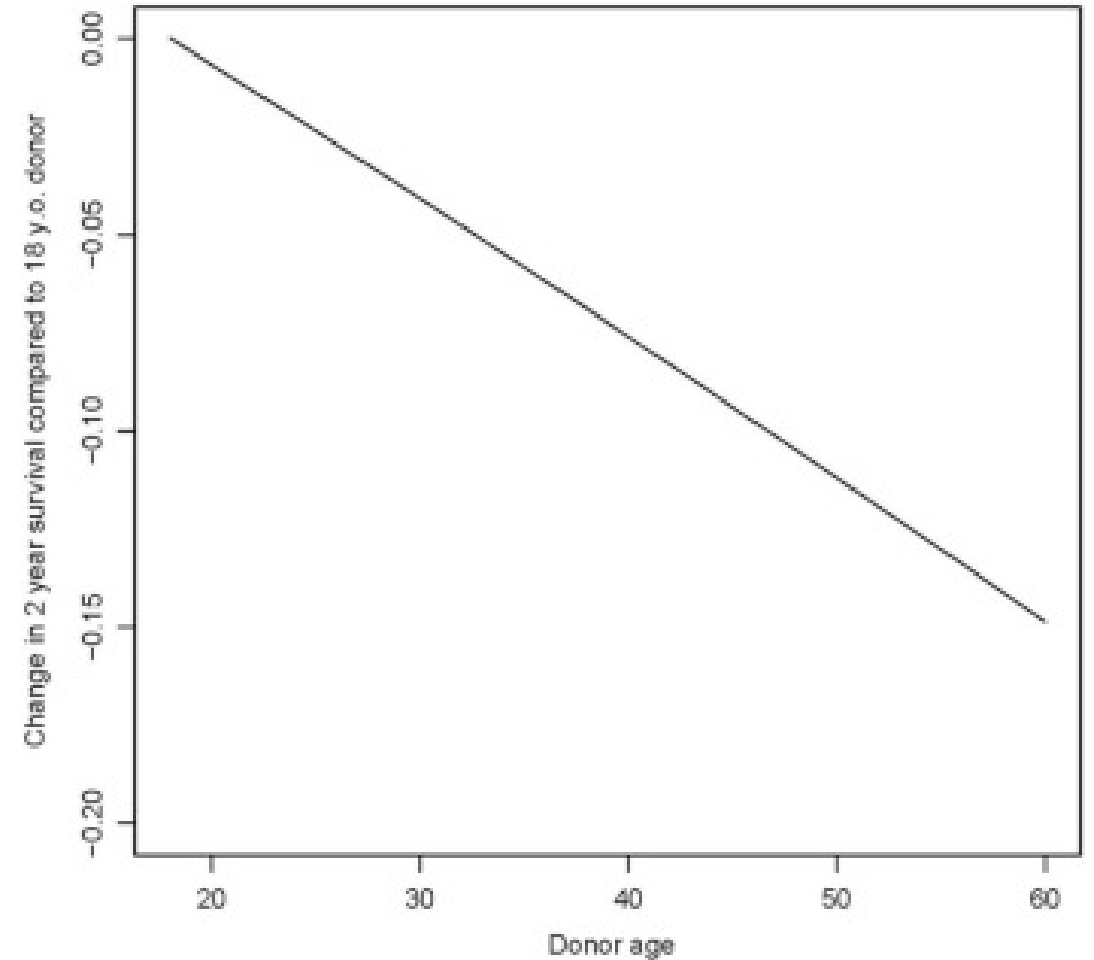




In the HLA-matched setting the youngest donor should be prioritized



Decrease in 2 year survival associated with increased donor age



M. Dellinger

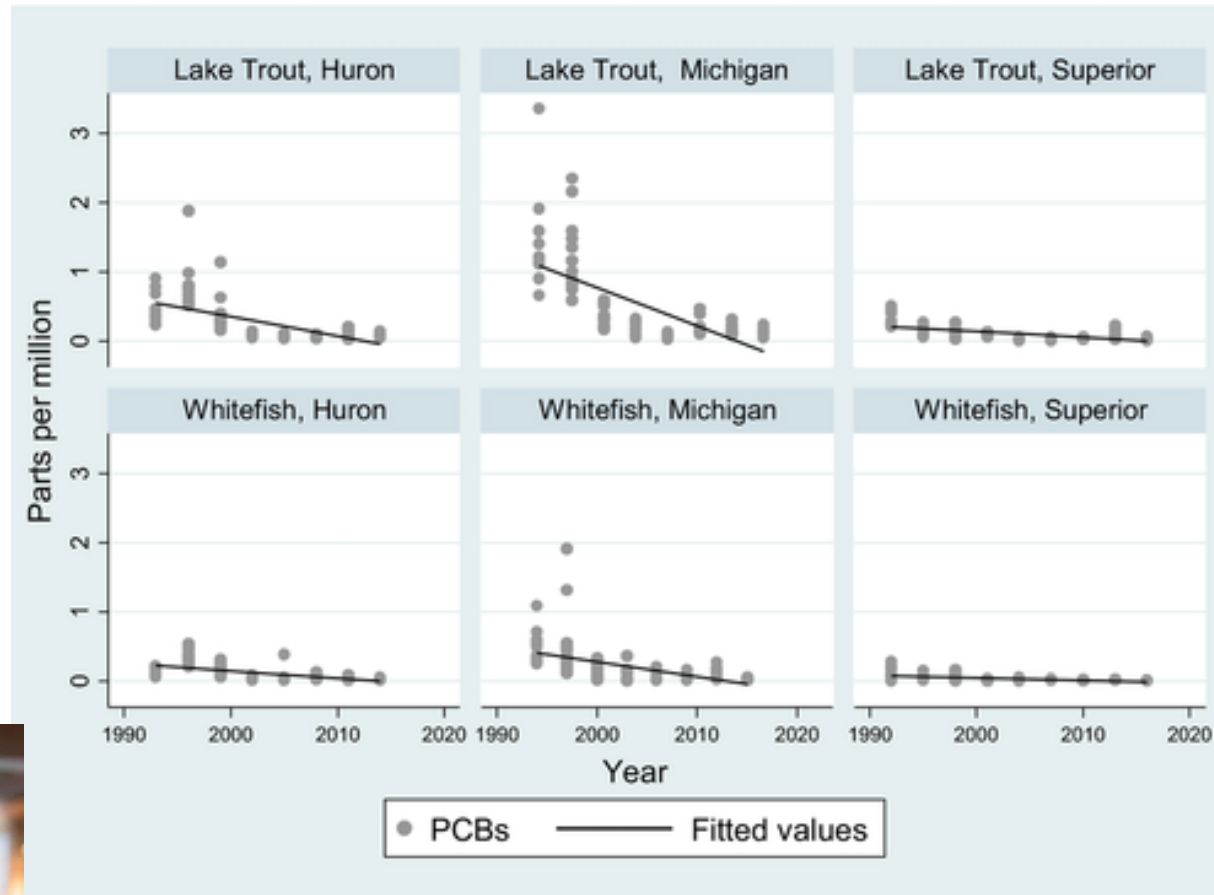
Mercury, Polychlorinated Biphenyls, Selenium, and Fatty Acids in Tribal Fish Harvests of the Upper Great Lakes  
*Risk Anal, 2018*

NIEHS R01 & NIGMS S06



# M. Dellinger

## Mercury, Polychlorinated Biphenyls, Selenium, and Fatty Acids in Tribal Fish Harvests of the Upper Great Lakes *Risk Anal*, 2018



Together,  
Taking on  
Cancer's  
Toughest  
Challenges

2019  
Scientific  
Retreat

# Program Updates

## Grants

**Ann Nattinger/Liliana Pezzin**, NCI R01: Can Regionalization Improve Outcomes and Reduce Disparities Related to Breast Cancer Care? An Evaluation of the NY Medicaid regionalization experiment

**Matthew Dellinger**, NIEHS R01: Gigiigooinaan (Our Fish): A New Advisory to Promote Anishinaabe Health and Wellness

**Alan Nyitray**, NCI R01: Determining the Accuracy of Self- and Partner Anal Exams for Detecting Anal Abnormalities

**Alan Nyitray**, NCI R01: Annual Anal Sampling Using DNA Screening to Identify Men Who Have Sex With Men at Increased Risk for Anal Cancer

**Melinda Stolley**, NCI R01: Men Moving Forward: A Lifestyle Intervention for African American Prostate Cancer Survivors

Together,  
Taking on  
Cancer's  
Toughest  
Challenges

2019  
Scientific  
Retreat

# CPO PROGRAM SPEAKERS

**Kirsten Beyer, PhD, MPH**

“Breast Cancer, Race and Place”

**Melinda Stolley, PhD**

“Obesity, Lifestyle Interventions and Cancer Survivorship”

**Alan Nyitray, PhD**

“Novel Opportunities for Anal Cancer Screening Among Men”