

# RACINE COUNTY

The information presented here represents data specific to Racine County, Wisconsin from 2001-2006, and is meant to complement the report, *The Burden of Suicide in Wisconsin*. Please refer to this report for technical notes and suicide prevention strategies.

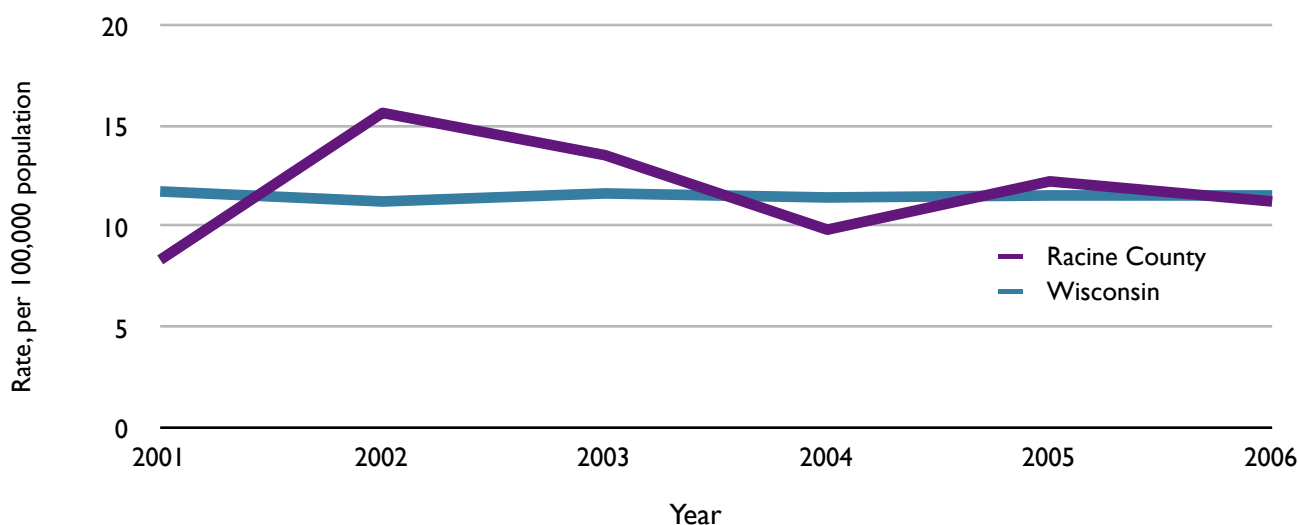
## KEY FINDINGS

- ◆ Overall, the suicide rate in Racine County from 2001-2006 was nearly the same as the state rate during the same period. However, individual years varied with the lowest rate of 8.4† in 2001 and the highest rate of 15.7 in 2002.
- ◆ Suicide represented a total of 3,997 years of potential life lost, at a rate of 368.6 for 2001-2006. This was less than the state rate (394.1 YPLL) for the same time period.
- ◆ The greatest number of suicides occurred in individuals aged 45-54, while the greatest number of hospitalizations and emergency department visits occurred in younger individuals, aged 15-24. This finding is the same at the state level.
- ◆ The cost of inpatient hospitalizations and emergency department visits due to self-inflicted injury was over \$3 million in 2006 alone.
- ◆ In Racine County, males completed suicide at a ratio of nearly 6:1 as compared to females. This ratio at the state level is 4:1.
- ◆ Firearms were the most frequently used method in Racine County suicides.

Table I. Numbers and rates (per 100,000 population) of suicides, inpatient hospitalizations, and emergency department visits due to self-inflicted injuries, Racine County, 2001-2006.

	Year											
	2001*		2002		2003		2004		2005		2006	
	Number	Rate	Number	Rate	Number	Rate	Number	Rate	Number	Rate	Number	Rate
Deaths	16	8.4†	30	15.7	26	13.6	19	9.9†	24	12.3	22	11.3
Inpatient Hospitalizations	214	112.5	186	97.5	236	123.1	266	137.9	282	145.0	283	144.7
Emergency Department Visits	NA		94	49.3	122	63.6	98	50.8	65	33.4	47	24.0

Figure I. Rates of suicide (per 100,000 population), Racine County versus Wisconsin, 2001-2006.



\*Emergency department data are not available for 2001.

Table 2. Numbers and rates (per 100,000 population) of suicides, inpatient hospitalizations, and emergency department visits due to self-inflicted injuries, by age, Racine County, 2001-2006.

Age Group	Deaths		Inpatient Hospitalizations		Emergency Department Visit*	
	Number	Rate‡	Number	Rate‡	Number	Rate‡
5-14	3	1.8‡	83	50.1	36	26.3
15-24	19	12.1‡	407	259.2	173	131.4
25-34	17	11.9‡	326	227.4	78	65.4
35-44	30	16.4	370	201.8	94	62.0
45-54	35	20.1	199	114.1	32	21.8
55-64	16	14.2‡	58	51.3	10	10.4‡
65-74	10	14.3‡	14	20.0‡	2	3.4‡
75-84	6	11.6‡	7	13.6‡	0	--
85+	1	5.1‡	3	15.2‡	1	6.0‡

Table 3. Inpatient hospitalization and emergency department (ED) visit costs due to self-inflicted injuries, Racine County, 2001-2006.

	Year					
	2001*	2002	2003	2004	2005	2006
Hospitalization Charges**	\$1.6	\$1.5	\$2.5	\$2.8	\$3.0	\$2.9
Average Cost per Stay	\$7,575	\$8,060	\$10,461	\$10,714	\$10,719	\$10,379
ED Visit Charges	NA	\$110,847	\$154,432	\$120,918	\$89,791	\$96,479
Average Cost per Visit	NA	\$1,179	\$1,266	\$1,234	\$1,381	\$2,053

Table 4. Years of potential life lost due to common causes, Racine County, 2001-2006.

Cause	Number	Rate
Malignant Neoplasms	16,231	1,496.9
Heart Disease	10,365	955.9
Motor Vehicle Crashes	5,492	506.5
<b>Suicide</b>	<b>3,997</b>	<b>368.6</b>
Diabetes	1,832	169.0
Homicide	1,818	167.7
HIV	453	41.8

Table 5. Suicides, by method used, Racine County, 2001-2006.

Method	Number	Percent
Firearm	55	40%
Sharp Instrument	3	2%
Poisoning	32	23%
Hanging, Strangulation, Suffocation	36	26%
Fall	2	1%
Drowning	1	<1%
Fire or Burns	1	<1%
Motor Vehicle	3	2%
Other	4	3%
<b>Total</b>	<b>137</b>	

\*Emergency department data are not available for 2001.

\*\*Charges listed are in millions of dollars.

‡Rates based on numbers of 20 or less are considered unstable due to random chance and should be interpreted with caution.