

MILWAUKEE HOMICIDE REVIEW COMMISSION

SNAPSHOT of HOMICIDE and NON-FATAL SHOOTINGS

Six-Month Report — January 1 thru June 30, 2014

NFS Total

Incidents: 215

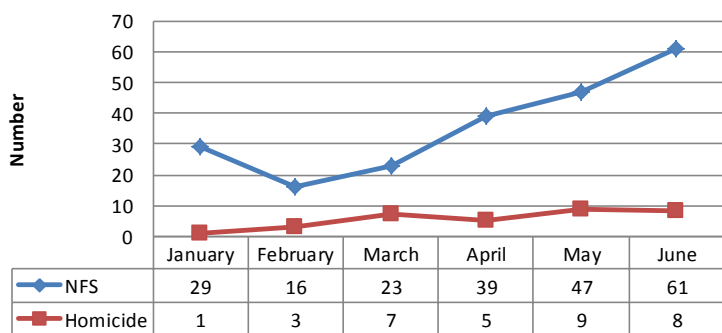
Victims: 258

Homicide Total

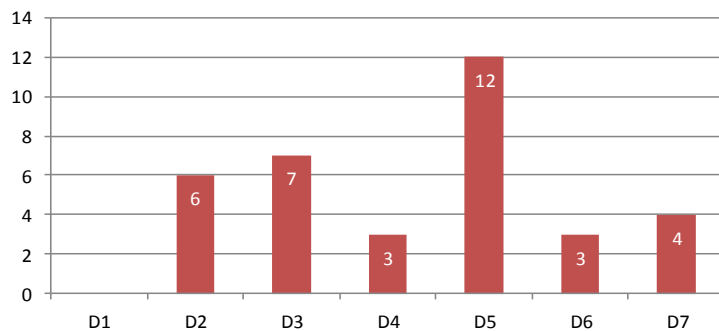
Victims Shot & Killed: 33

Homicide Victims: 35

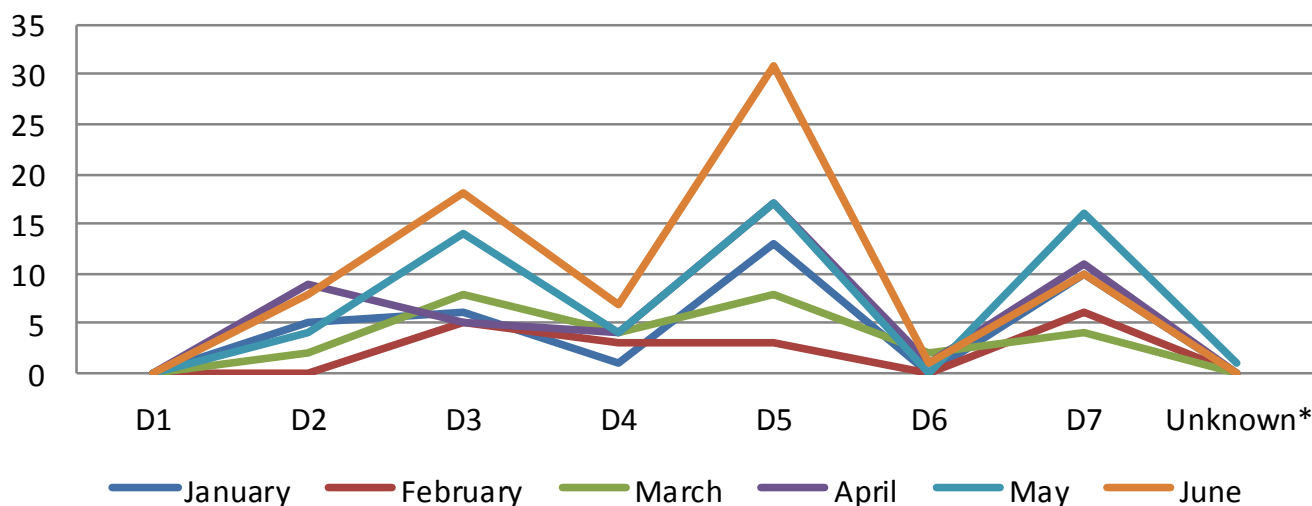
2014 Homicide & NFS Incidents by Month



2014 Homicide Victims - January thru June by District



2014 NFS Victims by District Month-to-Month

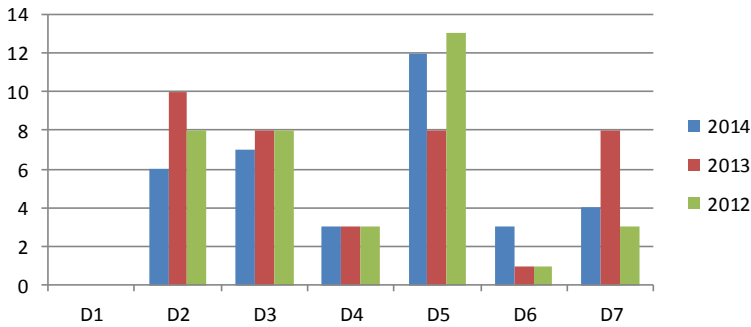


*Location of NFS incident not known.

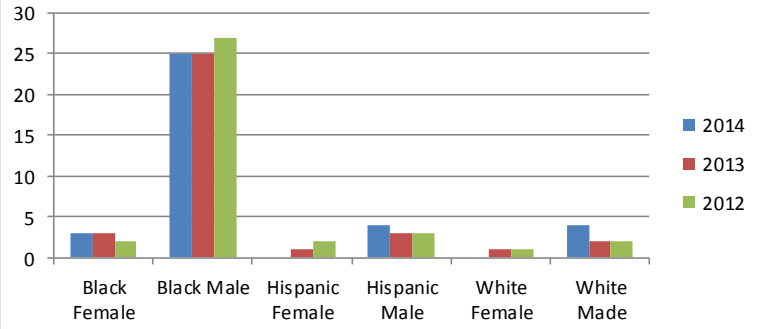
HOMICIDE DATA

THREE-YEAR COMPARISON—JANUARY 1 THRU JUNE 30, 2014

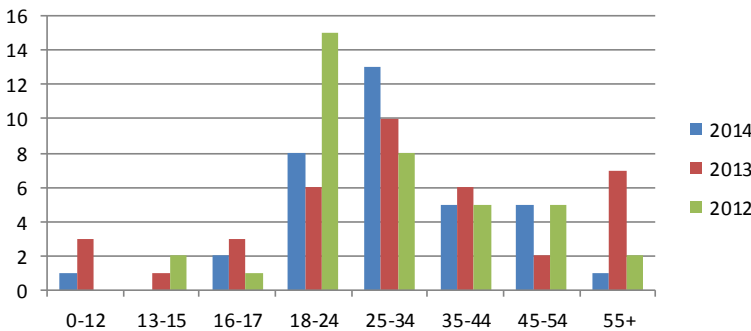
Homicide Victim by District Three-Year Comparison



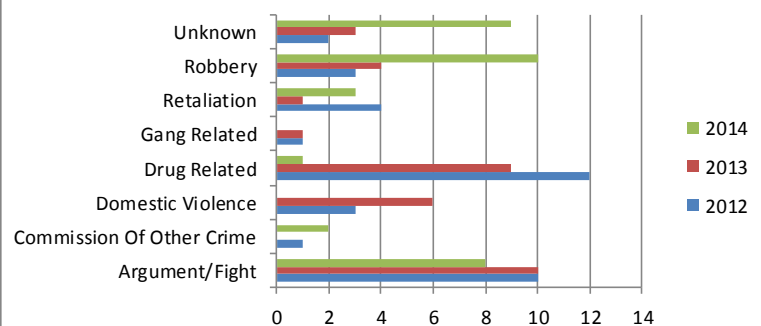
Victim Race & Sex Three-Year Comparison



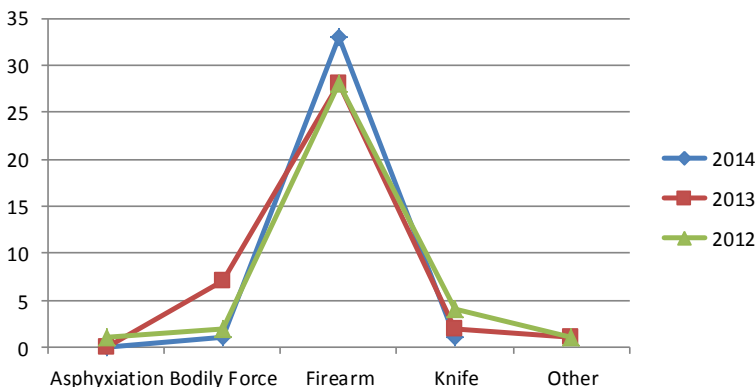
Homicide Victim Age Three-Year Comparison



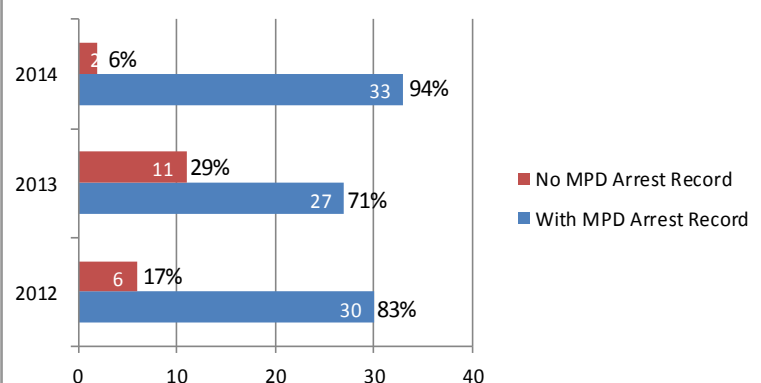
Homicide Victim Primary Factor Three-Year Comparison



Homicide Cause



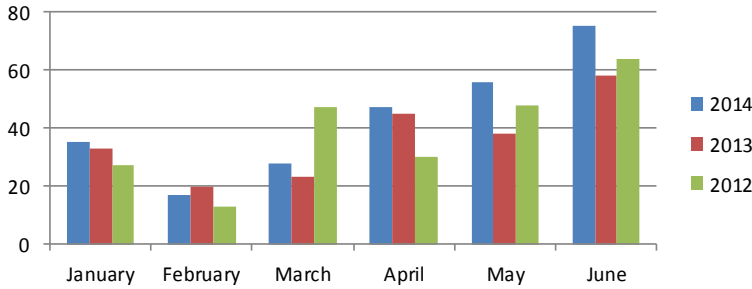
Homicide Victim MPD Arrest History



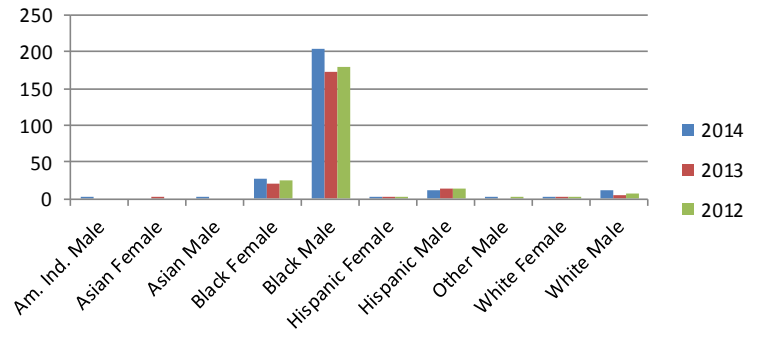
NON-FATAL SHOOTING DATA

THREE-YEAR COMPARISON JANUARY 1 thru JUNE 30, 2014

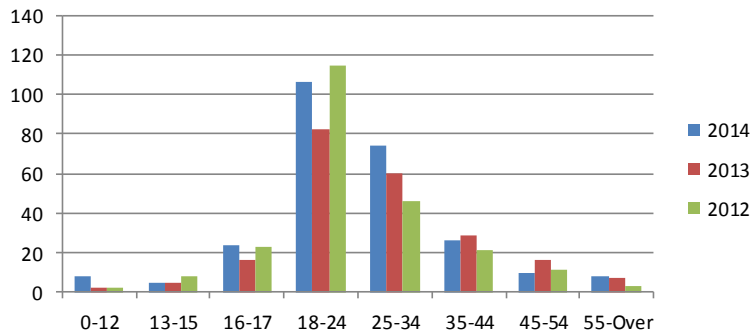
NFS Victim - Month-to-Month Three-Year Comparison



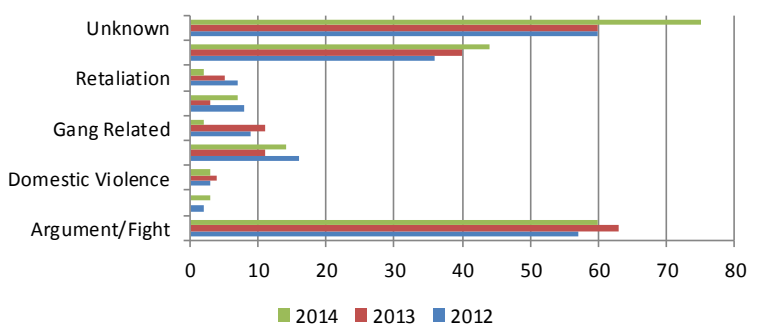
NFS Victim Race & Sex Three-Year Comparison



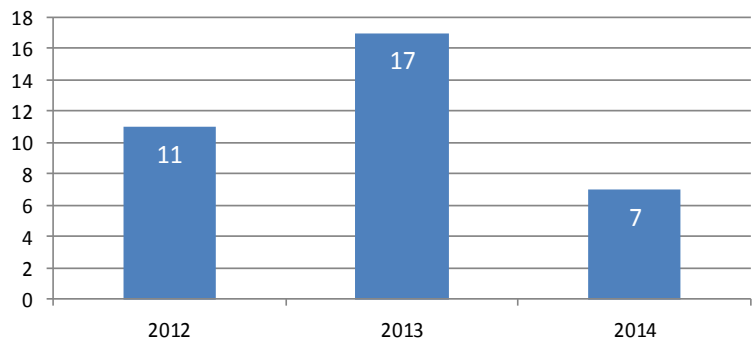
NFS Victim Age Three-Year Comparison



NFS Victim Primary Factor Three-Year Comparison



NFS - Tavern-Related Three-Year Comparison



NFS Victims with MPD Arrest Record Three-Year Comparison

