

## FIND US



### **PATHFINDERS EMERGENCY YOUTH SHELTER**

1614 East Kane Place  
Milwaukee, WI 53202



**Empowering youth in crisis  
to make positive  
life choices.**

**414-271-1560**

**Toll Free: 866-212-SAFE (7233)**

## SERVICES AVAILABLE

Offering emergency shelter and free services 7 days a week, 24 hours a day to youth experiencing crisis or to runaway, homeless and couch surfing youth ages 11-17.

### **Emergency Shelter**

- 8 beds
- For young people 11-17

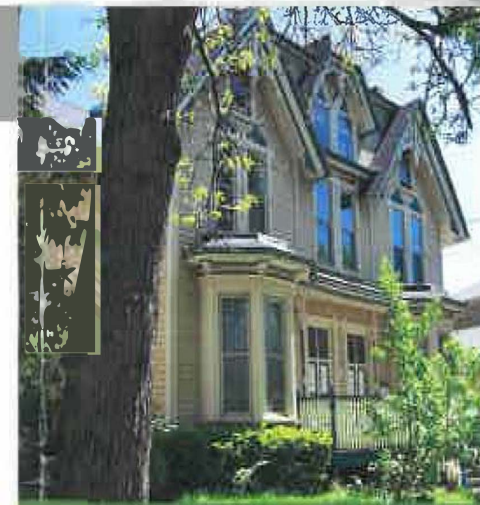
### **Counseling**

- Individual
- Family

### **Support Services**

### **Group Programs**

### **Aftercare/Prevention Services**



pathfinders

**EMERGENCY  
YOUTH SHELTER**

## WHAT'S IT ALL ABOUT?

Pathfinders Emergency Youth Shelter is an 8-bed emergency shelter for youth ages 11-17.

While we provide shelter for runaway and homeless youth at Pathfinders, we seek to prevent the need for shelter.



## PARTNERS

Walker's Point Youth & Family Center  
Family Planning Health Services, Inc.  
Keenan Health Center  
Milwaukee LGBT Community Center  
MPS Homeless Education Program  
Plymouth UCC  
Rethink Resources  
UMOS  
United Way of Greater Milwaukee  
UW - Milwaukee  
WAHRS AmeriCorps Program

## OTHER RESOURCES

**Safepath Hotline**  
(Sexual Abuse Hotline)  
Phone: 414-271-9523  
Toll Free: 866-212-SAFE (7233)

**Pathfinders Drop-In Center**  
(Ages 11-25)  
Phone: 414-964-2565

**Walker's Point Youth & Family Center**  
Youth Shelter Services  
Phone: 414-647-8200

**Pathfinders Street Beat**  
Outreach Specialist: 414-852-3027  
AmeriCorps Member: 414-840-4990

## CONTACT US

**ADDRESS:**  
1614 E. Kane Place  
Milwaukee, WI 53202

**PHONE:**  
414-271-1560  
Toll Free: 866-212-SAFE (7233)

**FAX:**  
414-271-1831

**E-MAIL:**  
[info@PathfindersMKE.org](mailto:info@PathfindersMKE.org)

**WEBSITE:**  
[www.PathfindersMKE.org](http://www.PathfindersMKE.org)