

Imagine MORE



Tuesday, June 23, 2026

Presented by:

Hammes

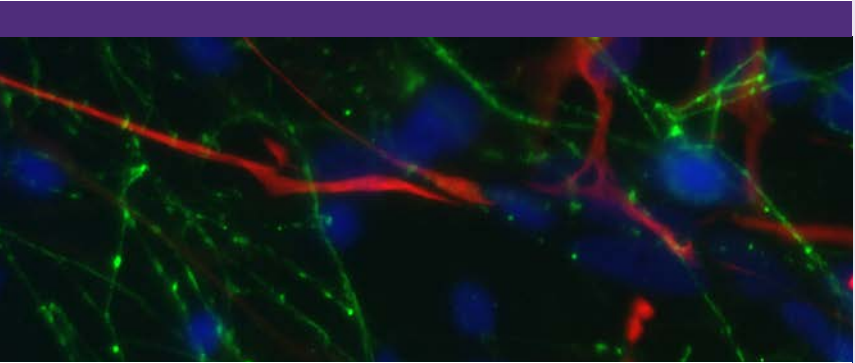

T&M
PARTNERS LLC
and KELBEN FOUNDATION
TED AND MARY KELLNER

Froedtert & MEDICAL COLLEGE of WISCONSIN

 Children's Wisconsin

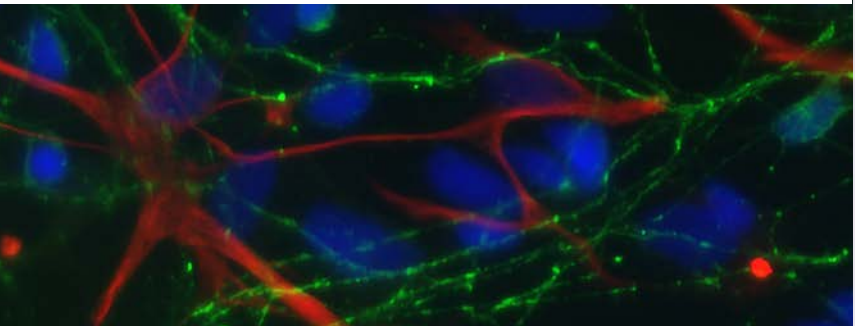
WINS
Wisconsin Institute of Neuroscience

NEUROSCIENCE RESEARCH CENTER 



Thank you, Dr. Raymond, for your dedicated leadership as President and CEO of the Medical College of Wisconsin.

Congratulations and best wishes, Dr. Kurpad, on your appointment as the new President.



Event Chairs, Mary and Ted Kellner, welcome you to

IMAGINE MORE

Benefiting the Medical College of Wisconsin's
Neuroscience Research Center

5:00 pm

WELCOME RECEPTION

6:00 pm

DINNER AND PROGRAM

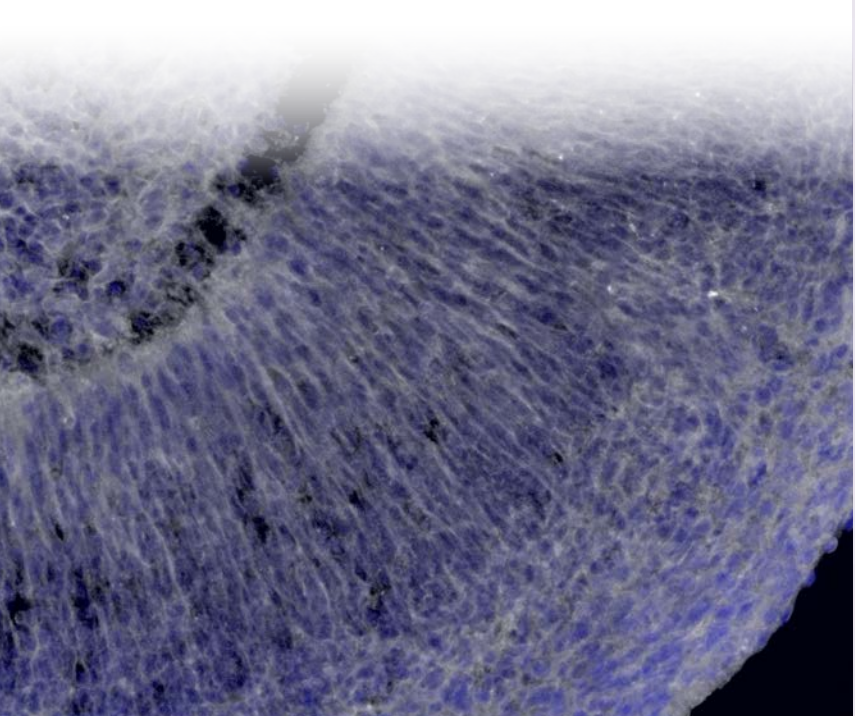
- Welcome Remarks
- Imagine More Award for Research
- Postdoctoral Award
- Neuro Hero Award
- Keynote Address: *Investing in Hope: Transforming the Future of Neurodegenerative Diseases* - Allison D. Ebert, PhD
- Paddle Raise

8:00 pm

CLOSING REMARKS

Hammes

proudly supports the Neuroscience
Research Center (NRC) and the Wisconsin
Institute of NeuroScience (WINS).





WINS launched in 2024 with a bold vision to uniquely combine the strengths and expertise of Children’s Wisconsin, the Froedtert & Medical College of Wisconsin health network, the Medical College of Wisconsin and the Clement J. Zablocki Veterans’ Administration Medical Center.

Milwaukee is now home to one of the nation’s first neuroscience institutes specifically designed to treat people from birth to old age – offering a unique model of “life-span” care. The Neuroscience Research Center (NRC) is part of the WINS Network.



Imagine the Possibilities

The passionate professionals at the Medical College of Wisconsin's Neuroscience Research Center are changing the lives of people with neurological disorders and opening doors to possibilities previously unimagined. Baird is proud to support their amazing work and the difference they make in our communities.

Discover the *Baird Difference*
rwbaird.com

Private Wealth Management
Asset Management
Investment Banking/Capital Markets
Private Equity

©Robert W. Baird & Co. Incorporated. Member SIPC. MC-1986200.

THE MEDICAL COLLEGE OF WISCONSIN

NEUROSCIENCE RESEARCH CENTER



About Us

Part of the WINS network, the **Neuroscience Research Center (NRC)** stands as a distinguished national leader in basic and translational neuroscience research. Through a collaborative programmatic plan and commitment to strengthening neuroscience research, the NRC greatly enhances and differentiates clinical care at Children's Wisconsin, Froedtert, and the Medical College of Wisconsin, offering hope to patients and families affected by diseases and injuries of the brain and spinal cord. The Center is comprised of over 150 faculty neuroscientists, and with

guidance from Director Allison D. Ebert, PhD, Professor and Eminent Scholar in Cell Biology, Neurobiology, and Anatomy, collectively strive to achieve new heights in neuroscience research. The NRC, with your generous support, is committed to advancing our understanding of psychology and neurological diseases and disorders, ranging from addiction disorders and Alzheimer's disease to epilepsy and stroke – all with the goal of advancing our understanding, shaping the future of patient care, and fostering a brighter tomorrow for everyone.



The Timarac Family

CONGRATULATES

John R. Raymond, Sr., MD
President and CEO,
Medical College of Wisconsin



**You are Our Hero.
Thank you for your vision.
Wishing you all the best!**

***We are proud of supporting
your past and future work!***

John R. Raymond, Sr., MD

President and CEO,
Medical College of Wisconsin

2026 Neuro Hero Award

The 2026 Neuro Hero Award honors John R. Raymond, Sr., MD, for his steadfast commitment to advancing neuroscience discovery and patient care. Through his leadership, Dr. Raymond has strengthened the foundation for research excellence at the Medical College of Wisconsin (MCW) Neuroscience Research Center (NRC) while championing the vital role of community support in advancing science that leads to innovative treatments and cures.

A clinician, scientist, and educator, Dr. Raymond has been an ardent advocate for basic science research at MCW and for his support of the NRC. His belief in the power of discovery – and in the people who make it possible – has provided a solid foundation for the growth of the NRC and the collaborations that define its success.

Throughout his more than 16-year tenure at MCW, Dr. Raymond has provided unwavering support for the NRC, its Board, and its mission, attending and promoting every Imagine More Dinner since the event's inception more than a decade ago. His strategic vision and trust in MCW's scientific leaders have been instrumental in establishing the Wisconsin Institute for Neuroscience (WINS) and expanding MCW's reputation as a national leader in academic medicine. His leadership has helped create an environment in which researchers, clinicians, and community partners can thrive, translating innovations in the lab into new hope for patients and families.

In honoring Dr. Raymond, the Imagine More Dinner celebrates a leader whose enthusiasm and belief in the mission of neuroscience continue to illuminate a path toward healing, innovation, and hope.



Michael McCrea, PhD

The Shekar N. Kurpad, MD, PhD Chair in Neurosurgery
Interim Executive Director, Wisconsin Institute of NeuroScience (WINS)
Director, Center for Neurotrauma Research (CNTR)
Director, Clinical Neuroscience Research Center (CNRC)
Professor and Vice Chair of Research, Department of Neurosurgery

Interim Executive Director of WINS



On June 1, 2026, Dr. Michael McCrea was appointed as the Interim Executive Director of WINS, following the transition of Dr. Shekar Kurpad to MCW President and CEO. Dr. McCrea will build upon WINS' integrated model to advance new discoveries, patient outcomes, and institutional reputation in equal measure.

Dr. McCrea is a renowned clinician-scientist and leader in neurotrauma, celebrated for his impact in Milwaukee and across the globe. He has published over 400 peer-reviewed scientific publications, presented hundreds of national and international lectures on traumatic brain injury (TBI), and led major global initiatives to advance research and clinical care in TBI. As the founding director of the WINS CNRC, Dr. McCrea has advanced WINS' leadership in clinical trials and is the principal investigator for the national VICTORY trial, which seeks to assess the efficacy of an intensive treatment model for veterans and first responders with TBI. He is also a neuropsychology consultant for the Green Bay Packers, Milwaukee Brewers, and Milwaukee Bucks. Dr. McCrea completed his doctoral degree at the University of Wisconsin-Milwaukee, internship training in neuropsychology at Vanderbilt University School of Medicine, and postdoctoral fellowship in clinical neuropsychology at Northwestern University Medical School.

Allison D. Ebert, PhD

Director, Neuroscience Research Center
Director, Neuroscience Doctoral Program
Professor and Eminent Scholar, Dept Cell Biology,
Neurobiology and Anatomy

Keynote Speaker — Director of NRC



Dr. Allison Ebert is a leading neuroscientist advancing stem cell models and neurodegeneration research. After training at Indiana University, Northwestern University, and UW–Madison—where she created the first stem cell model of spinal muscular atrophy (SMA)—she joined the Medical College of Wisconsin, rising to Professor, Eminent Scholar, and Director of both the Neuroscience Research Center and Neuroscience Doctoral Program.

Her research explores how support cells in the brain and spinal cord, along with infections, contribute to the damage and loss of nerve cells in diseases like Amyotrophic Lateral Sclerosis (ALS) and SMA. A trusted scientific advisor to CureSMA and the WI Chapter of the ALS Association and a federally funded investigator, she is also an award-winning mentor, uniquely honored in 2022 as both MCW's Teacher of the Year and Mentor of the Year.

The Cathy and Michael White Family

**proudly supports the 2026 Imagine
More Dinner and neuroscience
research at the Medical College of
Wisconsin and Froedtert Hospital.**



2026 Imagine More Award Co-Recipients



**Constanza
Garcia Keller, PhD**

*Assistant Professor,
Department of Pharmacology
and Toxicology, Medical College
of Wisconsin*



**Pablo Nakagawa,
PhD**

*Assistant Professor,
Department of Physiology,
Medical College of Wisconsin*

Proposal Title: Targeting Blood Pressure Neural Systems To Combat Alcohol Addiction

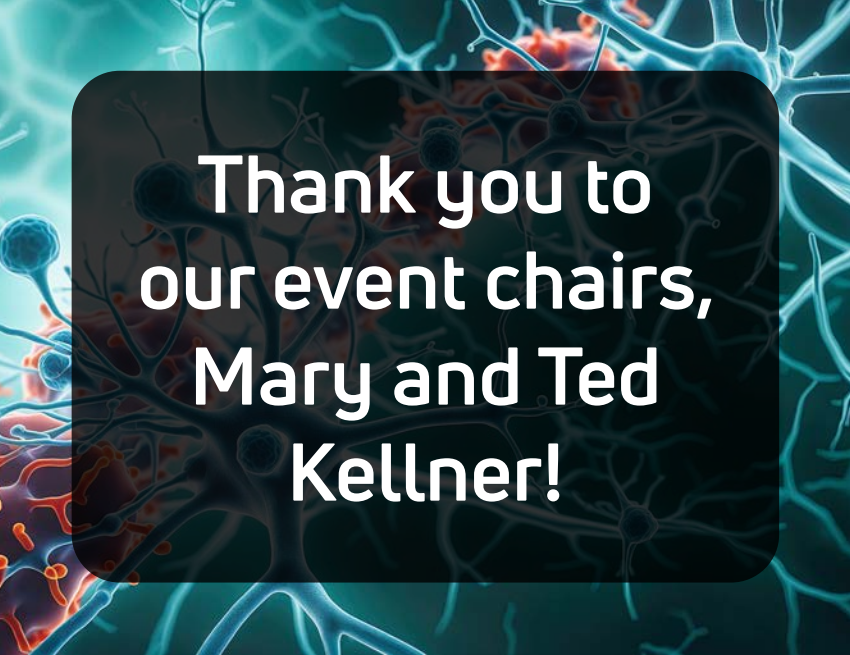
2026 Postdoctoral Award Recipient



Jia-Qing Tong, PhD

*Postdoctoral Fellow,
Medical College of Wisconsin*

Proposal Title: Turning Thought into Speech:
Decoding Imagined Language in Aphasia



Thank you to
our event chairs,
Mary and Ted
Kellner!



Uihlein Electric
Serving the Business Community for more than 100 years

The Gebhardt Family and Uihlein Electric Team proudly support the Medical College of Wisconsin and congratulate the 2026 Imagine More Award Recipients.

RESEARCH FOR A CAUSE AND A CURE.

Imagine a day when we need not fear for a family member losing their mind or memory before our very eyes. Imagine if we, ourselves, did not have to anxiously age for fear of losing our own minds due to early onset Alzheimer's.

Imagine if our families did not have to fear adolescent depression that can have terrible and sometimes fatal consequences.

Imagine a day when we do not have to deal with the demon called addiction, which has the power to ruin and ravage families and relationships. Imagine finding a cure for stroke, the leading cause of disability in the United States.

The researchers, scientists and doctors in the Neuroscience Research Center at the Medical College of Wisconsin are our instruments to change these imaginations into realities. Their time and talent are not enough.

**We need to
IMAGINE MORE**

It is important to not only provide resources for their research and work, but also to keep these innovators here in Milwaukee. We can help ensure the Medical College of Wisconsin continues to be recognized nationally and internationally for its work in neuroscience.

**Help us
IMAGINE MORE**

| Excerpt from Benjamin Wagner's remarks at the 2014 Neuroscience Park Dinner



HABUSH

PERSONAL INJURY ATTORNEYS

National reputation. Hometown service.

Habush Habush & Rottier S.C.
is honored to have supported the
Imagine More Dinner since its inception.
We proudly support the
Medical College of Wisconsin's dedicated
researchers and clinicians.

Congratulations to this year's award
recipients, and thank you to
Dr. John Raymond for your years of
dedicated service and extraordinary
leadership.

The Wigdale Family Foundation proudly supports the Neuroscience
Research Center and the Medical College of Wisconsin.

Our wish is to keep memories, both past and present, alive.

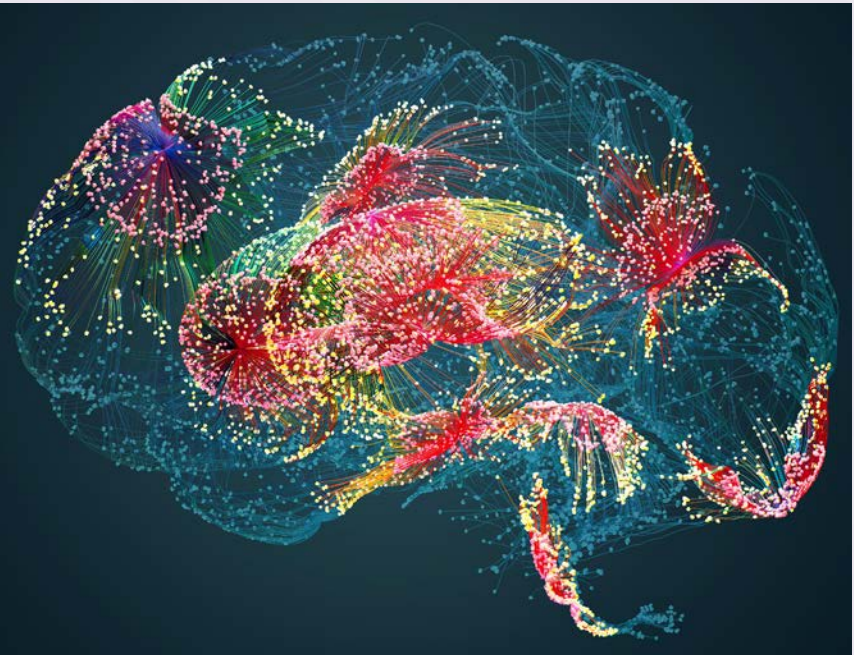


Thank you, **Dr. Raymond**, for your vision, dedication and
outstanding leadership of MCW.

We proudly support the
Neuroscience Research Center

And honor, our friend
John R. Raymond, Sr.

Madeleine & David Lubar
Marianne & Sheldon Lubar



THANK YOU

On behalf of the Neuroscience Research Center, the event chairs, the committee, and our NRC Board Members, we extend our heartfelt gratitude to all the donors, sponsors, and volunteers who have made this Imagine More Dinner possible. For over a decade, your unwavering generosity and dedication have inspired us to continue pushing the boundaries of neuroscience research, and together, we look forward to a future filled with groundbreaking discoveries and hope.

Imagine Presenting Sponsor

Hammes



Believe Sponsor



**Baird, Baird Funds, Ann & Warren
Pierson, Meg & Matt Dean,
Mary Ellen & Scott Stanek**

Discover Sponsors

**Bonnie and Ned Timarac
Cathy and Michael White Family**

Dream Sponsors

**Christopher Doerr The Wigdale Family Foundation
Gebhardt Family Stacy and Blair Williams**



Lubar & Co.

THANK YOU

Envision Sponsors

Dan and Mary Druml

Mrs. Fred Kasten

Jan Lennon and John Bosbous

**Milwaukee Regional
Research Forum**

Ryan and Kristin Schultz

Wagner and Strauss Families

Ed & Diane Zore and

Jim & Kathy Fuchs

GENERAL CAPITAL

Table Sponsors

Joseph and Jennifer Clements

The Davis Family

Allison D. Ebert, PhD

Brian Eckrose/Women in Science

Gray Matter Matters

Cecilia Hillard, PhD

Jason Kraiss

Ron Krizek

Shekar N. Kurpad, MD, PhD

**Michael McCrea &
Ann Marie Uselmann**

John R. Raymond, Sr., MD

John Selix and Nancy Bonniwell



THANK YOU

Partners

MCW Center for Neurotrauma Research

MCW Department of Neurosurgery

MCW Department of Psychiatry and Behavioral Medicine



DONORS

Doug and Sue Erlacher

Gene and Colleen Jacobus

Billie Kubly

Timothy O'Malley

Marlyn and Neal Spear

THE MEDICAL COLLEGE OF WISCONSIN
NEUROSCIENCE RESEARCH CENTER

**COMMUNITY
ADVISORY BOARD**

Neuroscience Research Center Director

Allison D. Ebert, PhD

Professor and Eminent Scholar, Dept Cell Biology, Neurobiology and Anatomy

Neuroscience Research Center Board Chair

Benjamin Wagner

Members

Sonny Bando
† T. Michael Bolger
John Bosbous
Mary Brennan-Druml
Steve Carlson
Al Costigan
Jeff Davis
Meghan Dean
Brian D. Eckrose
CeCe Hillard, PhD
Eugene T. Jacobus
Tracy Johnson

Sharon Kailas
Shekar Kurpad, MD, PhD
Jon Lehrmann, MD
Jan Lennon
Bryon Riesch
Ryan Schultz
John Selix
Bonnie Timarac
Ned Timarac
Shelly Timmons
Mary Triggiano
Stacy Williams

† Deceased/Founding Member



Brain Mapping Center Research & Development



Analyzing all data from the database...

- Processing
- Collection
- Analysis
- Storage

Menu

SALAD

CAESAR SALAD

Bartolotta's signature salad with romaine,
romano dressing, garlic croutons

MIXED GREENS SALAD *GF, VEGAN

Mesclun spring mix and crisp romaine with fresh herbs,
grape tomatoes, red onion, rice wine vinaigrette

MEAT ENTRÉE

FILET MIGNON *GF

Peppered-crust filet of beef, Yukon Gold potato purée,
French beans, au poivre sauce

SEAFOOD ENTRÉE

SAUTÉED SEA BASS *GF

Fingerling potatoes, roasted broccolini, olive tapenade

VEGETARIAN ENTRÉE

PARMESAN & RICOTTA RAVIOLI

Ravioli with sautéed wild mushrooms, spinach,
white truffle brown butter

PLATED DESSERT

MINI DESSERT TRIO

Chocolate fudge cake (Vegan), lemon tart,
honey cheesecake, Door County cherries



Thank You!

The Imagine More Dinner is the premiere annual fundraising event driven by the Neuroscience Research Center (NRC) in conjunction with the Wisconsin Institute of NeuroScience (WINS).

Your generosity and participation benefit the NRC whose mission is to reduce the impact of neurological and psychiatric disorders through innovative research, clinical care, and clinical trials.

mcw.edu/imaginemore

Make a Gift

