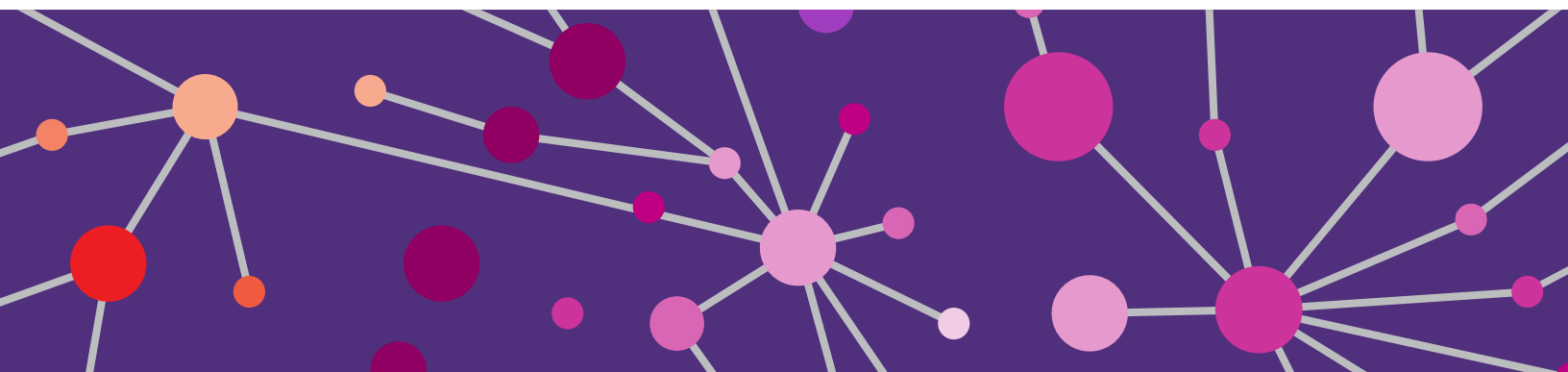


Imagine MORE



SPONSORSHIP OPPORTUNITIES





A NOTE FROM OUR CHAIRS

February 2025

Dear Friends,

We are writing with a personal invitation for you to join us on **Tuesday, June 24** at the **2025 Imagine More Dinner** and to consider supporting the event as a named sponsor.

Over the last 12 years, the Imagine More Dinner has evolved into the preeminent vehicle for raising awareness and funds for a broad range of diseases and injuries in the neurosciences. The event attracts hundreds of attendees from throughout southeastern Wisconsin and supports medical discovery focused on stroke, memory and movement disorders, neurological issues, behavioral health, and other conditions that impact patients and families.

Support from this event and other philanthropic investments gives us all an opportunity to imagine a world without the debilitating effects these diseases and conditions have on families throughout our communities.

The 2025 Imagine More Dinner features an address by Dr. Jennifer Knight, who will discuss the unique behavioral health challenges faced by patients with cancer. Dr. Knight is director of the MCW Psycho-Oncology Program and is a professor in the departments of Psychiatry and Behavioral Medicine and Microbiology and Immunology.

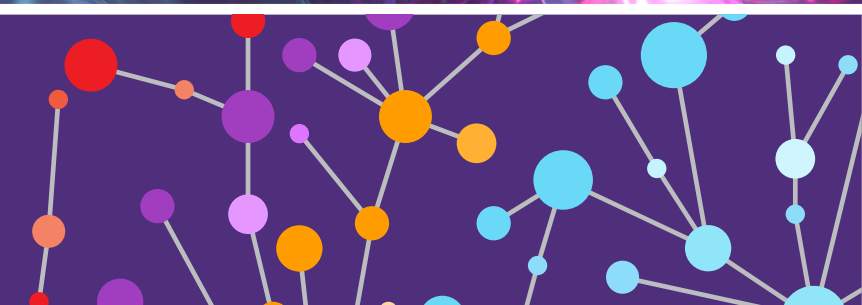
The 2025 Imagine More Dinner offers an outstanding platform for your business or organization to align with leaders in Milwaukee's healthcare community who are dedicated to fostering innovation and transformation throughout our region.

A list of philanthropic sponsorship opportunities for the evening is enclosed. We would be honored to have you join us as sponsors for the 2025 Imagine More Dinner.

Thank you for your thoughtful consideration and please accept our best regards.

Sincerely,

Cathy and Mike White
2025 Imagine More Dinner Chairs



SPONSORSHIP OPPORTUNITIES

"IMAGINE" SPONSOR: \$25,000

Charitable Deduction: \$20,464

- Three reserved tables of eight guests for dinner (twenty four total table guests)*
- VIP table placement
- Opportunity to host keynote speaker at your table (*in lieu of table guest; subject to availability*)
- Verbal sponsor recognition during event program
- One full-page advertisement on inside front cover of online event program
- Logo or name displayed on dedicated scrolling slide during dinner
- Prominent sponsor recognition on Imagine More Dinner event web page

"BELIEVE" SPONSOR: \$20,000

Charitable Deduction: \$16,976

- Two reserved tables of eight guests for dinner (sixteen total table guests)*
- Premier table placement
- Opportunity to host the Imagine More Award or Neuro Hero Recipient at your table (*in lieu of table guest; subject to availability*)
- Verbal sponsor recognition during event program
- One full-page advertisement in online event program
- Logo or name displayed on dedicated scrolling slide during dinner
- Prominent sponsor recognition on Imagine More Dinner event web page

"RESEARCH" SPONSOR: \$15,000

Charitable Deduction: \$13,088

- Two reserved tables of eight guests for dinner (sixteen total table guests)*
- Premier table placement
- Opportunity to host a physician or scientist at your table (*in lieu of table guest; subject to availability*)
- One full-page advertisement in online event program
- Logo or name displayed on dedicated scrolling slide during dinner
- Prominent sponsor recognition on Imagine More Dinner event web page

"DREAM" SPONSOR: \$7,500

Charitable Deduction: \$5,988

- One reserved table of eight guests for dinner (eight total table guests)*
- Preferred table placement
- One half-page advertisement in online event program
- Logo or name displayed on dedicated scrolling slide during dinner
- Sponsor recognition on Imagine More Dinner event web page

"ENVISION" SPONSOR: \$5,000

Charitable Deduction: \$3,488

- One reserved table of eight guests for dinner (eight total table guests)*
- Sponsor recognition in online event program
- Logo or name displayed on shared scrolling slide during dinner
- Sponsor recognition on Imagine More Dinner event web page

TABLE SPONSOR: \$3,200

Charitable Deduction: \$1,688

- One reserved table of eight guests for dinner (eight total table guests)*
- Sponsor recognition on Imagine More Dinner event web page

EVENT DONATIONS

- \$1,000+ will be recognized on the Imagine More Dinner event web page.

CUSTOM SPONSORSHIP OPPORTUNITIES AVAILABLE

To inquire for more details on pricing and customizable sponsorship opportunities, please contact:
Heidi Gempeler Olson | hgempeler@mcw.edu

Custom sponsorships include, but are not limited to: Valet, Cocktail Hour, Dessert

*Due to venue space limitations, we are unable to accommodate more than **eight** seats per table.





SPONSORSHIP REGISTRATION

PLEASE COMPLETE THE FORM BELOW TO CONFIRM YOUR CHOSEN SPONSORSHIP

CONTACT INFORMATION:

Company Name

Primary Contact

Contact Email Address

Contact Phone Number

Mailing Address

City/State/Zip Code

Imagine More Dinner SPONSORSHIP LEVELS:

_____ **\$25,000** Imagine Sponsor

_____ **\$20,000** Believe Sponsor

_____ **\$15,000** Research Sponsor

_____ **\$7,500** Dream Sponsor

_____ **\$5,000** Envision Sponsor

_____ **\$3,200** Table Sponsor

PAYMENT INFORMATION:

Donor Advised Funds cannot be used to pay for goods and services.

_____ Please send me an invoice

_____ I have enclosed a check made payable to the "Medical College of Wisconsin"

To pay by credit card, please do so online:

<https://onecau.se/imaginemoredinner2025>

If requesting an invoice, this form may be submitted via email to: **hgempeler@mcw.edu**.

Or, mail to: **Heidi Gempeler Olson**
Office of Institutional Advancement
Medical College of Wisconsin, PO Box 26509,
Milwaukee, WI 53226-0509

DONATION:

\$ _____ **to Neuroscience Research**

***DETAILS ABOUT THE IMAGINE MORE DINNER ARE SUBJECT TO CHANGE. PLEASE FOLLOW MCW.EDU/IMAGINEMORE FOR EVENT UPDATES.**