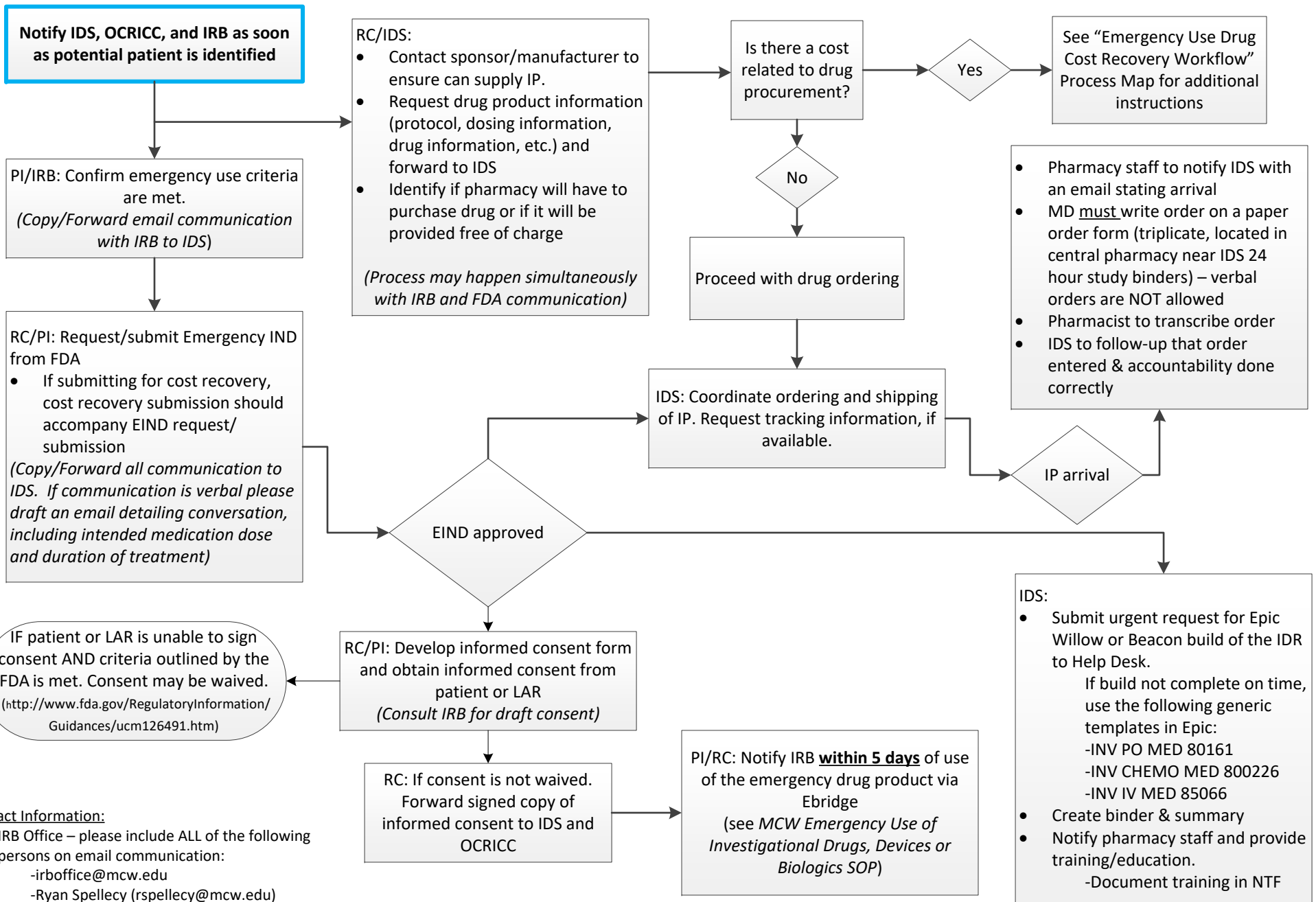


PROCESS MAP: INVESTIGATIONAL DRUG EMERGENCY USE WORKFLOW

V. 04/28/2023



Contact Information:

- IRB Office – please include ALL of the following persons on email communication:
 - irboffice@mcw.edu
 - Ryan Spellecy (rspellecy@mcw.edu)
 - AnnMarie Eve (aeve@mcw.edu)
 - Kate Gaudreau (kgaudrea@mcw.edu)
- IDS – IDS.Pharmacy@froedtert.com
- OCRICC – ocricc@froedterthealth.org

EIND = Emergency IND
 IRB = Institutional Review Board
 IP = investigational product
 IDS = Investigation Drug Service
 LAR = Legally authorized representative

OCRICC = Office of Clinical Research & Innovative Care Compliance
 PI = Primary Investigator
 RC = Research Coordinator
 SOP = Standard Operating Procedure