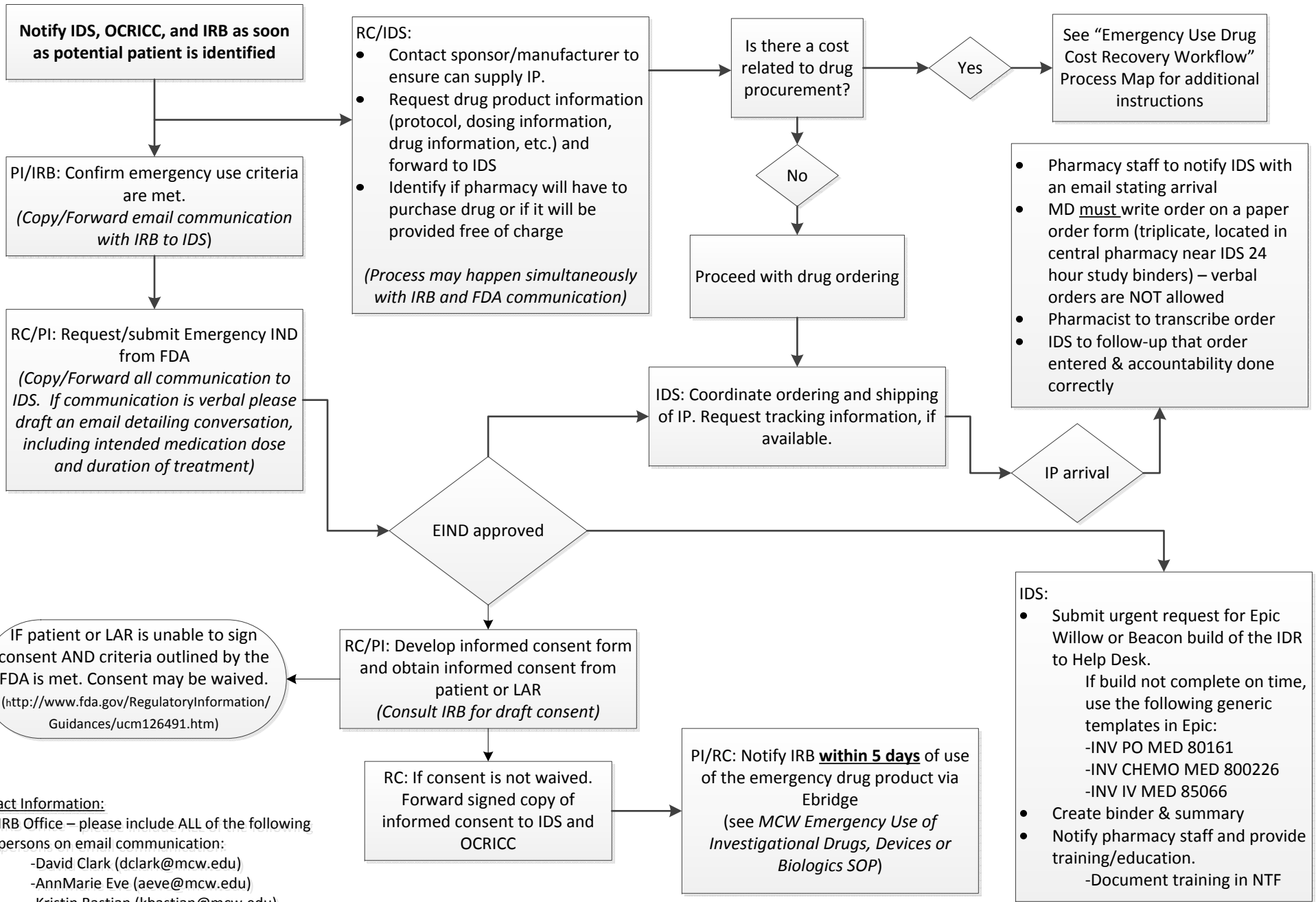


# PROCESS MAP: INVESTIGATIONAL DRUG EMERGENCY USE WORKFLOW



## Contact Information:

- IRB Office – please include ALL of the following persons on email communication:
  - David Clark (dclark@mcw.edu)
  - AnnMarie Eve (aeve@mcw.edu)
  - Kristin Bastian (kbastian@mcw.edu)
  - Jennifer Hollenstein (jhollenstein@mcw.edu)
  - Kate Gaudreau (kgaudrea@mcw.edu)
- IDS – IDS.Pharmacy@froedtert.com
- OCRICC – ocricc@froedterthealth.org

EIND = Emergency IND  
 IRB = Institutional Review Board  
 IP = investigational product  
 IDS = Investigation Drug Service  
 LAR = Legally authorized representative

OCRICC = Office of Clinical Research & Innovative Care Compliance  
 PI = Primary Investigator  
 RC = Research Coordinator  
 SOP = Standard Operating Procedure