

Strengthening health and safety, in Greater Milwaukee and abroad, by reducing disparities for the world's diverse population



Spanning greater Milwaukee nonprofit organizations, including hospitals and community health centers, philanthropic and civic organizations, city and county government agencies, higher education institutions, biohealth companies, and nonprofit research institutions.



ECONOMIC IMPACT



16,961
Total Jobs

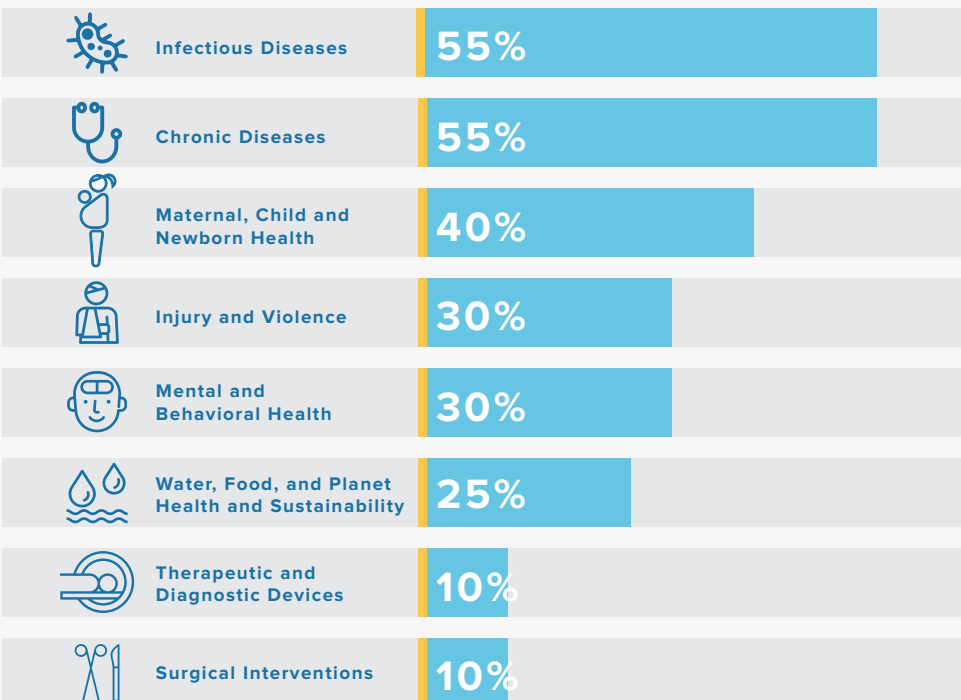


\$4.7B
in Economic Output



\$143.8M
in State and Local taxes

GLOBAL HEALTH DISCIPLINES IN WHICH WE ARE ENGAGED

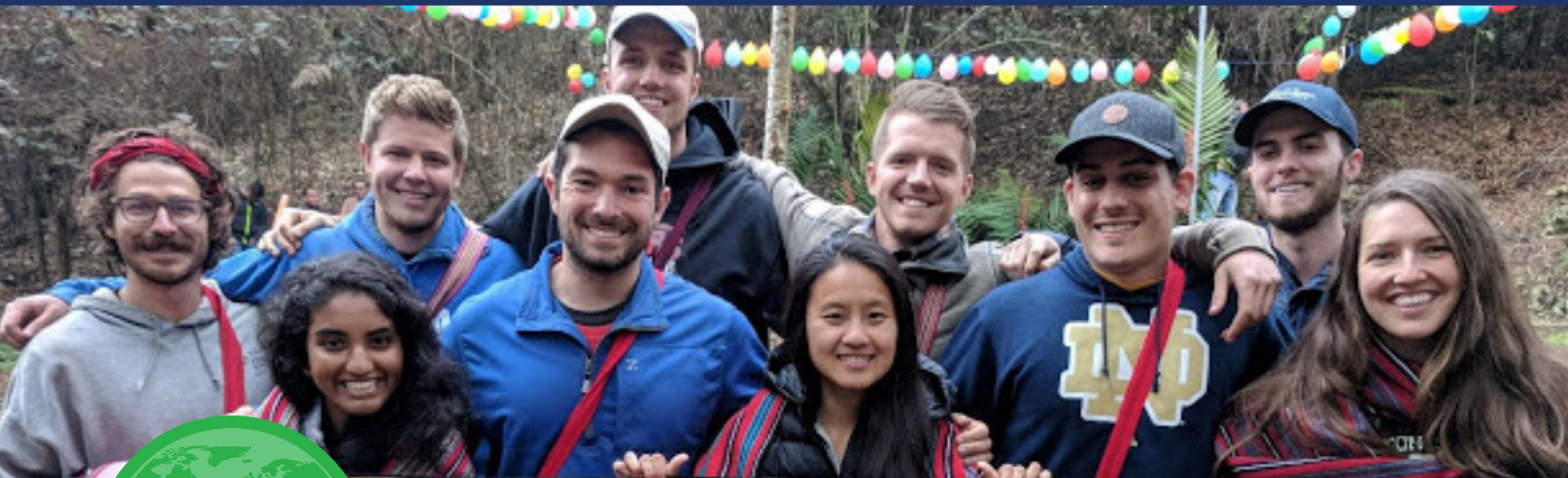


The greater Milwaukee metropolitan area is a hub for global health activity that strengthens the economy, advances research, and enriches the culture of Southeastern Wisconsin."

Thomas Panke, MS, PT, ATC, Dean, College of Health Sciences, Carroll University



Preparing future global health leaders, partnering to solve local and global problems, contributing to Wisconsin's health and economy.

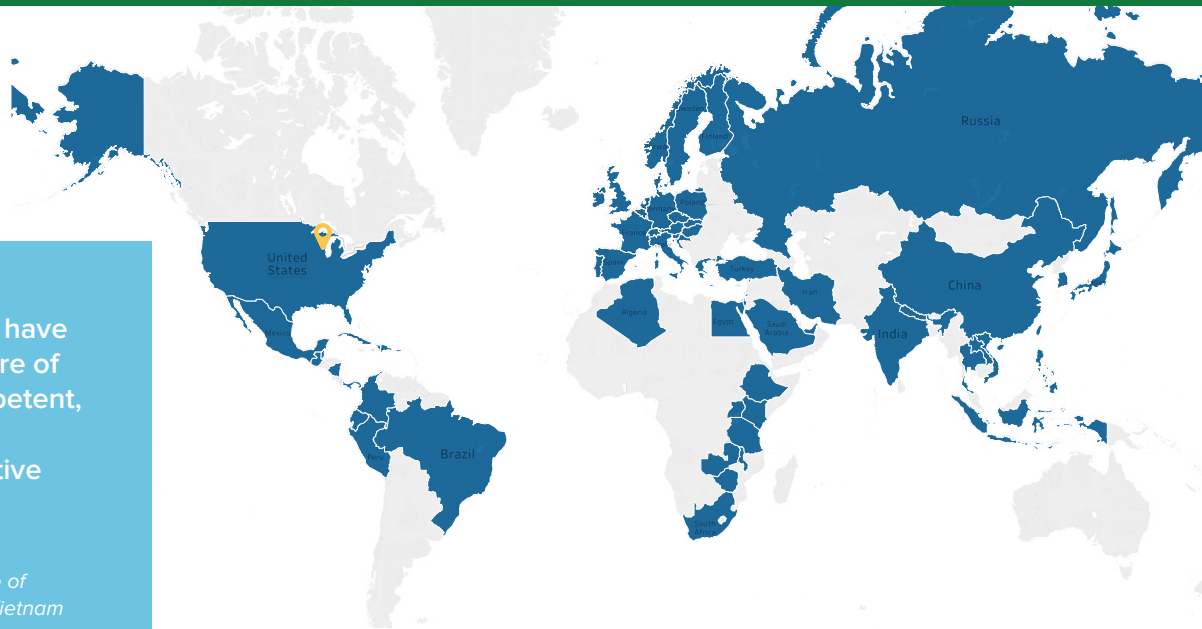


Number of countries where greater Milwaukee global health organizations worked and studied in 2019

“

My month in Vietnam will have a drastic impact on my care of patients. I feel more competent, more independent, more confident, and more creative when thinking about how to care for patients.”

Shola Vaughn, MD, Medical College of Wisconsin Dermatology Resident, Vietnam



“GE Healthcare’s global impact starts with local commitment. Since we moved to Wisconsin in 1947, the state has become a global hub for biohealth research, innovation, and commercial activity. Our partnership with local higher education institutions have contributed to medical technologies and healthcare solutions that benefit patients throughout the world.” – Jay Hill, MS, CTO and COO, GE Healthcare Imaging, and Board Chair, BioForward Wisconsin

Read the full study and learn more about the Milwaukee Global Health Consortium at: <http://www.mkeghc.org>

The study was performed by RTI International and published in April 2020. The base year for the analysis is 2019.

