



Medical College of Wisconsin Department of Pediatrics Impact Report - FY23



TABLE OF CONTENTS

Our Mission	p. 2
A Message from Dr. Margolis, Interim Chair.	p.3
A Message from Karen Turner, Chief Department Administrator	p.4
DOP Patient Care	p. 5
DOP Research	p. 6
DOP Education	p. 7
DOP Community Engagement	p. 8
DOP Advanced Practice Providers	p. 9
DOP by the Numbers	p. 10
DOP Projects & Initiatives	p. 11
DOP Recognition & Awards	p. 12
DOP Section Updates	
• Adolescent Medicine	p. 13
• Asthma, Allergy & Clinical Immunology	p. 13
• Cardiology	p. 14
• Child Advocacy & Protection	p. 14
• Complex Care	p. 15
• Critical Care	p. 15
• Developmental Biology	p. 16
• Emergency Medicine	p. 16
• Endocrinology	p. 17
• Gastroenterology	p. 17
• General & Community Pediatrics	p. 18
• Genetics	p. 18
• Genomic Pediatrics	p. 19
• Hematology, Oncology & Bone Marrow Transplant	p. 19
• Hospital Medicine	p. 20
• Infectious Diseases	p. 20
• Medical Education	p. 21
• Neonatology	p. 21
• Nephrology	p. 22
• Pediatric Psychology & Developmental Medicine	p. 22
• Pulmonary & Sleep Medicine	p. 23
• Quantitative Health Services	p. 23
• Rheumatology	p. 24



OUR MISSION

Through intentional investment and partnerships, the DOP will be a more diverse department that nurtures and mentors our DOP family, leading to impactful quality and growth across our missions of clinical care, research, education and community service.

- The DOP will intentionally partner with departments and institutions across the medical campus to fuel campus success in clinical care, research, education and community service.
- The DOP will integrate with CSG/CW/MCW to provide an infrastructure and culture that supports our shared vision of providing the best and safest care through knowledge that changes life.
- The DOP will leverage strategic investments to amplify the basic, translational, and clinical research portfolio.
- The DOP will continue to make investments to prioritize diversity, equity, and inclusion as a key fabric of our DOP culture.
- The DOP will continue to make investments in the development and mentorship of our faculty, APPs, learners at all stages, and staff.
- The DOP will pursue innovation to lead to premier outcomes for our patients and community.
- The DOP will partner with CSG/CW/MCW to prioritize retention and recruitment of faculty, APPs and staff who will further the shared missions of the pediatric enterprise.

EXECUTIVE SUMMARY – DR. MARGOLIS



Welcome to our second annual Medical College of Wisconsin (MCW) Department of Pediatrics (DOP) Impact Report for Fiscal Year 2023. Within these pages, you will learn about the many successes that our people have built over the past year through their passion, their commitment and their knowledge! We are so proud of our team for all the things we have accomplished on behalf of the kids in our community.

Being part of the MCW DOP and Children's Specialty Group (CSG) is an incredible privilege and honor. In each of our key missions –Patient Care, Research, Education and Community Engagement –members of the DOP are actively involved in communities throughout the state, focused on ensuring our children receive the care they need to be the healthiest in the nation. We so appreciate the investments made by Children's Wisconsin (CW), MCW and CSG into our DOP. We are confident that we will continue to provide a significant return on investment, as we partner and work together to improve the health for children and their families. Integrating with Children's Wisconsin, while being a pillar within MCW, is enabling us to continue to provide the best and safest care as we pursue knowledge changing life.

As we approach the future and the changes and challenges that inevitably arise, I am confident because of our greatest asset –our people! Our people-our staff, our Advanced Practice Providers, our learners and our faculty within the DOP and CSG provide hope to children and families every day across our state and beyond.

As you review these pages, please know that it was our people that made all these amazing things happen. I am so proud to be part of this team, and I cannot wait to see us continue to build on our solid legacy into our bright future.

David A. Margolis, MD
Professor and Interim Chair
Department of Pediatrics

EXECUTIVE SUMMARY – KAREN Q. TURNER, MBA

I am pleased to present the Medical College of Wisconsin (MCW) Department of Pediatrics (DOP) annual Impact Report. This document is a celebration of the work of the DOP team - the talented Faculty, Advanced Practice Providers, Staff, Residents, and Fellows.

As the Chief Administrator for the Department of Pediatrics, I would like to acknowledge the dedication of all of the administrative team throughout the department and divisions. Specifically, I would like to thank Angel Cannon, Charlie Ann Rykwalder, Jenny Patterson, Ann Breunig, Katherine Coffelt, Fozia Yusuf, Lisa Nielson, Melissa Barber, Lisa Meder, Lisa Kukec, Erica Stuckert, Kerry Solum, Stephanie Stroud, Andrew Webb, Cathy Brummer, and Wendy Brockman. These talented and hard working Administrators are ably supported by several dedicated and loyal staff too numerous to mention here. I am humbled to be a member of this administrative team and I am grateful to work alongside each and every one of them.

This report is our attempt to capture the breadth and scope of the amazing work that happens each day. But honestly, this Impact Report tells but a part of the story because it is impossible to capture the true impact of the work that our team does because much of what happens is not measurable. The real meaning of our work comes from knowing that what we do, either directly or indirectly, helps the children in our region, and those that come to us from other states, lead healthier lives. We are also very proud of our continued commitment to promote and provide opportunities to grow with our diversity, equity, and inclusion training modules.



Karen Q. Turner, MBA
Chief Department Administrator,
MCW Department of Pediatrics
Sr. Administrator,
Children's Specialty Group

DOP PATIENT CARE



The Department of Pediatrics remains committed to the career development of our Faculty and Staff. During the next academic year, we will continue to develop and offer variety of programs and resources for Faculty development.

The 2022-2023 academic year marked several notable events:

- Promotion of 21 faculty
- Training of two new Resilience Coaches: Kris Saudek, MD and Rich Tower, MD
- Re-establishment of Lunch & Learn sessions
- Continuation of the Scholarship in Progress series
- Development of a department-wide junior faculty mentorship program
- Travel award support for presentations at regional and national meetings
- Sponsorship for individuals selected to the Women's Leadership Learning Academy and MCW Leadership Academy

The purpose of these actions is to continue to provide high quality medical, mental and behavioral health care to children of all demographics. Across the enterprise, there is increased awareness of and screening for social determinants of health, accompanied by the provision of family resources and support. In response to community needs, many divisions with the DOP have collaborated and expanded services to address critical, unmet mental and behavioral health concerns.



Jeffery L. Segar, MD
Professor
Vice Chair of Faculty Development

DOP RESEARCH



The Child Health Research mission is best viewed as a CSG or system-wide enterprise. In this arrangement, revenue streams accrue from multiple stakeholders. Important process changes include the successful transition of the CW IRB to MCW and the establishment of a quasi-endowment to support the child health research mission. A component of the variable mission support that CSG provides to MCW will also return to support the Child Health Research agenda.

With support from Dr. Kerschner and the CTSI, we initiated a new Child Health KL2 program. This KL2 award is open to full-time early-stage investigators who hold primary appointment in the Children's Research Institute and have a faculty appointment from the Medical College of Wisconsin, University of Wisconsin-Milwaukee, Marquette University, or Milwaukee School of Engineering. The overall goal of this award is to provide training opportunities for investigators working in clinical/translational research to become competitive, independent investigators.

Other highlights include:

- A new Director for Mental and Behavioral Health research has joined our team.
- Searches are underway for leaders in Child Health Bioinformatics, Clinical Outcomes and Tissue Engineering.
- Metrics of our current success (using DOP data as a surrogate marker for the system-wide Child Health Research enterprise include:

- NIH FY 2021 funding \$11.9M
- Blue Ridge ranking for the DOP 2021 30th
- Grant submissions (CRI,CW,CWF) FY2022 287 (67)
- Grants funded (CRI,CW,CWF) FY2022 112 (38)
- Publications (top quartile) FY2022 536 (281)
- Open interventional clinical trials FY2022 221
- Total all active Federal grants (#) \$68.6 MM (37)



Calvin B. Williams, MD, PhD
Professor
Vice Chair of Research

DOP EDUCATION



As Vice Chair for Education, I am always excited to witness the growth within our trainees during the academic year and look forward to seeing their positive impact on our communities and the field of medicine as they graduate into the next phase of their careers. Likewise, I am excited to work with the new trainees, preceptors, mentors, and staff who have recently joined our team! As our Medical Education Impact Report shows, the Department of Pediatrics Training Programs experienced highly successful recruitment seasons and we could not have done it without the support of our amazing Medical Education Staff, Program Leaders and our Faculty, APP, and trainee interviewers! The most impactful way to recruit the next generation of Pediatric and Pediatric Subspecialty Providers is for our candidates to interact with the amazing people who already work and learn here at MCW and Children's!

Over the past year, teamwork has allowed us to be proactive as we modernize our training programs to best align with the evolving landscape in Pediatrics including planning for the new ACGME (Accreditation Council for Graduate Medical Education) Pediatric Residency Training Requirements. Additionally, we continue to build upon our administrative support and educational experience through the expansion of our Pediatric Fellowships Central Coordinator Team, the recruitment and addition of primary-care focused Associate Program Directors/Leaders within our Pediatric Residency and the integration of increased individualized curriculum offerings throughout our training programs.

2022-23 has also been a time of collaboration as we extend the reach of our educational programs across the Pediatric Enterprise. The Dairy Cares of Wisconsin Simulation Center trained over 3,000 individuals who work and learn at Children's Wisconsin through nearly 550 different events. The Pediatric Simulation Program also designed, piloted, and will soon offer an asynchronous facilitator training program which will allow faculty, trainees and staff interested in leading simulation-based education to have access to high quality training to build upon their teaching sessions and promote career development.

As we enter the 2023-24 academic year, I look forward to: welcoming our MCW Fusion Students as we increase our capacity to precept students during this time of medical school curriculum transition, building upon our DEI recruitment and retention efforts including welcoming our first DEI focused Pediatric Residency Associate Program Director, growing our pediatric physician scientist training programs, finalizing our Society for Simulation in Health Care National Accreditation application, and expanding upon our pediatric community and global health programs.



Tara Petersen, MD, MEd
Associate Professor
Vice Chair of Education

DOP COMMUNITY ENGAGEMENT



The DOP continues to be a leader on campus in Inclusion, Diversity, and Equity. Our dedication to internal department training in ID&E principles continues to serve as a beacon for the remainder of MCW as evidenced by our external trainings of other departments. Our focus of creating a culture of inclusivity for our employees and patients remains at the forefront of our work and serves as a guidepost for all business, clinical, and academic decisions.

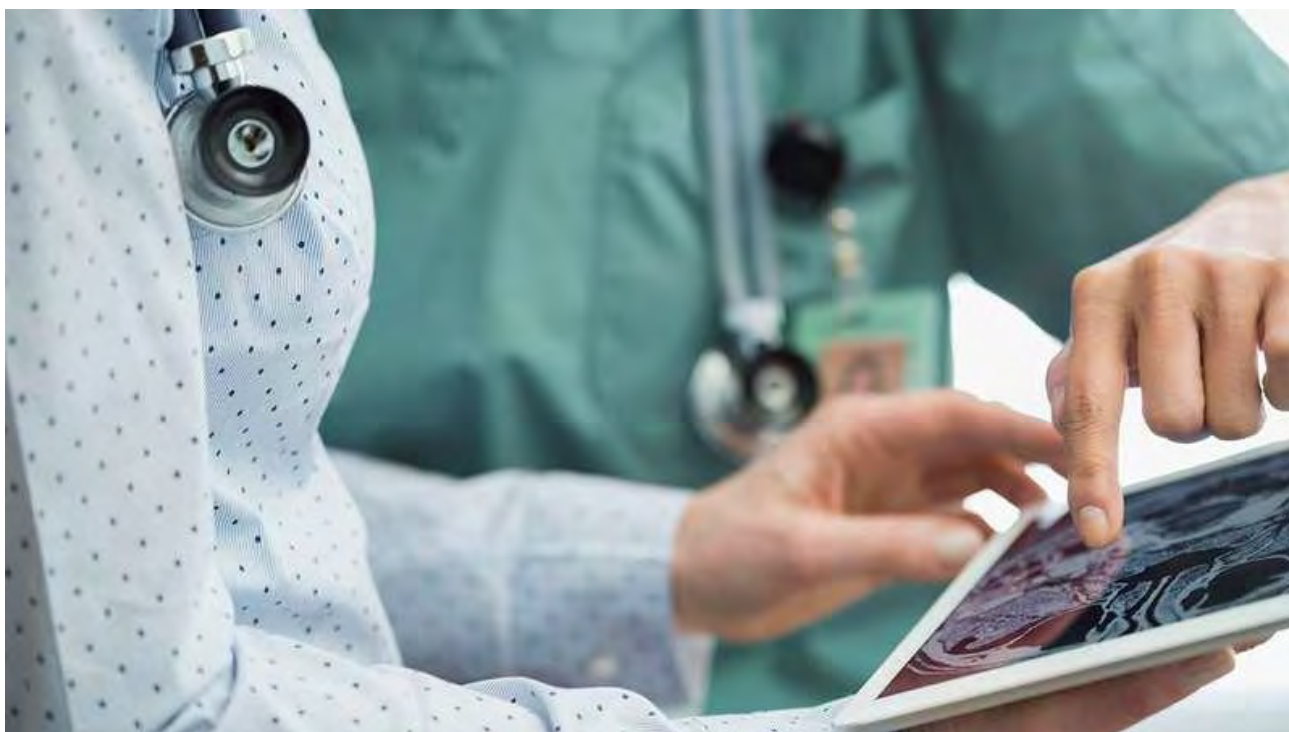
Further, our department has positively impacted the community through outreach, advocacy, and presence. Our efforts can be seen throughout the campus and community. The DOP has trained nearly 800 members of the department in Unconscious Bias since its inception and another 100 in on microaggressions as a continuation of our educational efforts. This past year, we sponsored over 20 members of our faculty, staff, and learners to attend trainings and conferences across the country focusing on best practices in ID&E to incorporate into DOP efforts.

In the coming year we look to further collaborate with CW ID&E efforts, develop our third training installation in allyship, and enhance our community engagement.



Mike Levas, MD, MS
Associate Professor
Vice Chair for Diversity, Equity and
Inclusion (DEI)

DOP ADVANCED PRACTICE PROVIDERS



We are excited to introduce Katy Tillman, MSN, CPNP, our new Vice Chair for the DOP Advanced Practice Providers (APPs). Katy is our first Vice Chair of APPs, and in this role she is responsible for developing and implementing strategic plans to support APPs in the DOP. She serves as an advocate, providing guidance and mentorship to APP cohorts and acting as an advisor for recruitment and infrastructure.

The Department of Pediatrics (DOP) is composed of many highly talented providers. We have the pleasure of employing over 140 Advanced Practice Providers (APPs) within the DOP across all our divisions. APP providers partner with our physician colleges to provide the very best care for patients. In addition to the excellent direct patient care, APP providers are instrumental to program growth, education, community engagement, innovative care including research quality improvement and assurance.

Over the last FY the APP practice in the DOP grew by 9%.

Over this next year, goals include continuing to foster a collaborative environment with knowledge sharing, problem solving to limit barriers, continued development of additive structure and support for professional development, and ongoing identification of best practices and opportunities for APPs within the DOP. With the strong talent pool of APPs, I look forward to continued elevation of the APP role within the enterprise.



Katy A. Tillman, MSN, CPNP
Nurse Practitioner
Vice Chair for Advanced Practice
Providers

DOP BY THE NUMBERS

The DOP was still an incredibly productive place in FY23 in each of MCW's four missions— patient care, research, education and community engagement. Below you will see some of our key metrics from last year!

In FY23, we welcomed **51** new faculty members



We offered **4** departmental trainings on a variety of topics for we trained **57** people



We saw **36** staff promoted in FY23 (+6 from last year!)

We received **23** federal grants amounting to **\$27.9M** (July 1, 2019-June 30, 2023)

Our team published **591 publications** (+29 from FY22) in FY23



We saw **28** primary faculty promoted (**+10** from FY22)!

4 DOP specialty areas included in Best Children's Hospital Rankings



- Cancer
- GI
- Nephrology
- Pulmonary

We welcomed **116** new staff members in FY23 (+12 from FY22)



Blue Ridge Ranking for the DOP is **#34** (of 87) pediatric clinical science departments with a total of **\$9,399,208** in funding

We hosted **2** Grant Writing Retreats with **60+** attendees in FY23



DOP PROJECTS & INITIATIVES

With a continued focus on ensuring the DOP is a great place to work, we launched or continued several important projects in FY23. Below, you can learn about several of these impactful projects and initiatives.

In FY23, the DOP
Blood Drives – 3
drives; 60 donors;
165 lives impacted



As of today, **624 people** have been trained through our Trauma Informed Workplace Training Modules

55 additional individuals were trained in Unconscious Bias in FY23, currently ~80% of the DOP has completed this training.



Professional Photos –
Over **30+** headshots
updated

29 (+4 from FY22) DOP volunteers participated in 4 community events making countless connections with community members

Our Microaggressions Training was completed by **85** individuals this year, in two years, ~**200** DOP members have completed this training.

We brought back Lunch & Learns (which had been postponed since the beginning of the pandemic) and hosted 4 which were attended by ~80 people

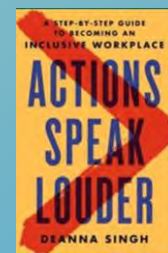
We had a successful Community Giving Campaign – raised ~\$**12,500**; with **10.8%** of the DOP giving (**77 total donors**)

Our Staff Engagement Development and Wellness Committee, inclusive of nearly **40** individuals across the DOP, focused on topics important to employees. This group also presented at MCW's Professionalism Week!

- **Engagement Team** – Launched Our Story newsletter feature introducing **8** staff members; in-person potluck; audited section communication channels
- **Development Team** – Provided **4** trainings on w/~**60** attendees
- **Wellness Team** – Launched P2P talks for individuals to connect on a variety of topics; built comprehensive, regional wellness calendar

74 (+49 from FY22) individuals utilized our anonymous Resilience Coaching program, and we added **2** new coaches

We launched a 10-week book club focused on *Actions Speak Louder: A Step-by-Step Guide to Becoming an Inclusive Workplace*. The club consisted of **10 members** including those from the DOP as well as individuals from Waukesha County Technical College.



DOP RECOGNITION & AWARDS

This year, the DOP saw many members of our faculty and staff receive recognition from MCW, our partners and organizations around the world. Congrats to everyone in the DOP who was recognized or awarded this year. This is just a snapshot, not a full list.

- **Dr. Amanda Brandow** received the Research Award at the Sickle Cell Disease Association of America Annual Meeting
- **Dr. Paul Harker-Murray** received the Best Poster Award for Discovery and Developmental Therapeutics at the MCW Scientific Retreat
- **Matt Tallar, MD**, was named an Ambulatory Specialty Champion of Purpose
- **Asriani Chiu, MD, Leslie Gimenez, MD**, and **Heidi Zafra, DM**, were named an Exceptional Woman in Medicine by MKE Lifestyle
- **Barry Pelz, MD**, was given the Outstanding Faculty Service Award by the MCW Faculty Council Library Committee
- **Dr. Zachary Graff** was recognized by the MCW Curriculum and Evaluation Committee for teaching in Foundations of Clinical Medicine
- **Dr. Matthew Kudek**, was editor of selected “Top Read” publication in the Journal of Immunology
- **Dr. Tara Petersen** was awarded with the “High Five” Faculty Teaching Award for the Pediatric Residency Program
- **Dr. Sara Sabbagh** was recognized as a top patient and family experience performer for her area and an outstanding role model for At Our Best culture and values
- **Becky Buelow, MD**, was named in the top 14 for patient experience for CSG
- **Sara Lowe, MSN, RN, APNP, CPNP, AE-C**, was named to the Leadership Academy
- **Jennifer Hauf, APNP**, was named a CSG Top Patient and Family Experience Performer
- **The DOP Staff Engagement, Development and Wellness Committee (SEDWC)** presented at MCW’s Professionalism Week
- **Dr. Cheryl Brosig** received the Newburger-Bellinger Cardiac Neurodevelopmental Award from the Cardiac Neurodevelopmental Outcome Collaborative
- **Dr. Peter Frommelt** received the Excellence in Teaching in Pediatrics Award from the American Society of Echocardiography
- **Alison Kriegel, PhD**, was named 2022 American Physiological Society Renal Section Young
- **Alexandra Connolly (CRC III)** named Outstanding Contribution to CureGN Mentorship Program
- **Dr. Stephen Molitor, PhD**, was accepted into Clinical Research Scholars Program 2023-2025 cohort
- **Dr. Jennifer Jetton** was accepted into Women’s Leadership Learning Collaborative (2022-2023)
- **Dr. Seema Menon** received the inaugural North American Society for Pediatric and Adolescent Gynecology Service Award

ADOLESCENT MEDICINE

Our highly educated and trained providers consist of Physicians, Fellows and Advanced Practice Providers who provide care to adolescents in inpatient, ambulatory and community-based care settings.

FY23 Pride Points

- Welcomed 2 new Advanced Practice Providers and 1 Faculty member to the Adolescent Medicine team
- Fellowship program continues to be a highly sought after fellowship program
- Ongoing team building work to further build upon the strengths of our team to meet the needs of the community

Section Chief: Seema Menon, MD (*interim*)

Admin Leader: Stephanie Stroud



Patient Care:

Strategically focus on expansion of Adolescent Medicine services across the CW system.

Research: Highly committed to research and publications with a collective 7 grants and publications

Education: The Adolescent Medicine Fellowship continues to grow and match year over year

Community: Expansion into community-based clinics to meet the needs of Adolescent where they live

ASTHMA, ALLERGY & CLINICAL IMMUNOLOGY

The division includes seven faculty and eight nurse practitioners and provides high quality, comprehensive asthma, allergy, and immunologic services to the whole family, children AND adults at the Milwaukee Campus, as well as four other Children's Care Closer to home locations in Southeast and Northeast Wisconsin. We also have CLIA certified diagnostic labs for immunologic and allergic conditions that are utilized across the US.



Monthly hybrid section meeting with our Appleton group.

FY23 Pride Points

- Despite being down 2 faculty, we have still provided excellent care, and covered all our clinical sites.
- Continue to develop enhanced food allergy program.
- Two faculty providers ranked in the top 14 for patient experience for all of CSG.

Section Chief: Asriani Chiu, MD (*interim*)

Admin Leader: Lisa Kukec

APP Leader: Sara Lowe, APNP

Patient Care: Patient experience scores for all providers continues to exceed goal at 88.6 (goal is 87.2) Increased total volume of in-person visits from 18,361 in 2021 to 18,879 in 2022.

Research: 12 active clinical trials focused on areas such as Asthma, Epicutaneous IT (EIT), Hypereosinophilic Syndrome (HES), Immune Mediated Inflammatory Skin Conditions, and Primary Immunodeficiency Diseases (PID).

Education: Providers deliver a robust education rotation in the clinical setting and research labs. We are excited that our Fellowship program is in the process of being restarted in FY25.

Community: Providers have educated about asthma and food allergies at the Environmental Justice Infrastructure Initiative, Watertown Regional Medical Center and Ascension Southeast Wisconsin.

CARDIOLOGY

In addition to providing innovative and compassionate care to kids with congenital heart disease, the section of Pediatric Cardiology is fast-growing in areas of quality outcomes and research to better answer the parent's question of "why my child."

FY23 Pride Points

- The Fox Valley pediatric cardiology team relocated to the new Appleton clinic, and the echo lab received their first accreditation.
- Operationalized cardiac precision medicine, including enrollment of over 40 families in FY23.
- Noninvasive Imaging Research Core Lab now serves as a national platform for research studies through various PHN contributions.



Present team members and alum of the Children's Wisconsin Cardiac Imaging Lab reunited at the 2023 American Society of Echocardiography Meeting in Maryland.

Section Chief: Peter Bartz, MD

Associate Chief: Joy Lincoln, MD

Admin Leader: Jenny Patterson, MHA

Patient Care: Servicing families closer to home through 11 outpatient clinic sites throughout Wisconsin and Michigan.

Research: \$33M requested in grant applications for FY23

Education: The Pediatric Cardiology Fellowship Program celebrates its 20th Anniversary. Graduated 48 from our general pediatric cardiology fellowship.

Community: Project Adam designates 15 new school through the Heart Safe School Program in 2023. Since inception in 2016, 405 schools in Wisconsin are designated as Heart Safe Schools.

CHILD ADVOCACY AND PROTECTIVE SERVICES

Child Advocacy and Protection Services (CAPS) is a prevention-focused, comprehensive, academic, child abuse program serving eastern Wisconsin's communities. CAPS' resilient professionals provide evidence-based clinical services to support child and family safety, and excel in innovative research, education, community programming, and patient care.



CAPS team members from across the state gather for their annual retreat at American Family Field.

FY23 Pride Points

- Advanced practice provider (APP) and fellowship curricula with APP-Now program to support immediate, expert medical consultations
- Multi-tiered advocacy for child maltreatment prevention and intervention
- CAPS' medical team's superb national reputation

Section Chief: Sandeep K Narang, MD, JD FAAP

Medical Director: Angela Rabbitt, DO, FAAP

Admin Leader: Melissa Barber, MBA

Patient Care: 6,900 children seen throughout our locations

Research: 33 formal external presentations

Education: 39 learners rotated through CAPS

Community: 20+ Community programs that members of the CAPS team are integrated among.

COMPLEX CARE/SPECIAL NEEDS

The Complex Care Program (CCP), one of the nation's first, serves children with medical complexity and their families by coordinating care to improve health outcomes and family function.

FY23 Pride Points

- Active collaboration with multiple academic, clinical, and state organizations to improve care for Wisconsin's medically complex children
- Multidisciplinary work on trauma informed care, sibling wellbeing, transition to adult care
- Advocacy work on improving access to home care and respite care, anti-ableism

Section Chief: K. Jane Lee, MD, MA (*interim*)

Medical Director: Jessica Schnell, MD, MPH

APP Leader: Maura Brophay, MSN, CPNP-PC

Admin Leader: Rose Ackmann, MSN, RN, CCM, CPN



Jessica Schnell (l to r), Brenda Ahles, Karen Rytlewski and Amy Morgan-Tautges at the 2022 Complex Care family picnic.

Patient Care: 99% of families, 92% of primary care partners very satisfied or satisfied with the program

Research: Collaboration on >15 active research projects

Education: Have served as a consultant to over 20 programs nationally and internationally, with visitors from as far away as Australia

Community: Hosted our annual Family Picnic at the Milwaukee County Zoo, engaging more than 700 participants

CRITICAL CARE

The Critical Care Division of Pediatrics at the Medical College of Wisconsin/Children's Wisconsin provides the highest quality of intensive care services for children in the Midwest. Our highly educated and trained providers consist of Physicians, Fellows, and Advanced Practice Providers. In addition, the division has a robust research program that consists of faculty and a staff research team.



Fellow Bootcamp

FY23 Pride Points

- Provides the intensive care infrastructure that supports offering many specialized services at CW, including responding to all CW codes
- Excels in interprofessional education and scholarly publication including advance practice providers, faculty, fellows, residents, nursing, medical students, respiratory therapists etc.
- High performing institution in PediResq national QI collaborative

Section Chief: Michael T. Meyer, MD, MS, FCCM

Admin Leader: Ann Breunig, MEd

Patient Care: 3,038 patients screened for critical care research protocols

Research: 33 publications by faculty, fellows, and APPs

Education: Host up to 15 learners per day as part of critical care clinical teams

Community: 15 active QI projects

DEVELOPMENTAL BIOLOGY

The mission of the Division of Developmental Biology is to perform cutting edge research and high-quality training at the graduate and postdoctoral level. Research interests focus on the genetic causes of developmental syndromes through human variant analyses, phenotype characterization, and use of zebrafish as a model organism.

FY23 Pride Points

- Developmental Biology is proud to provide training to the next generation of translational scientists, supported by an NIH T32 training grant.
- Continuous success in identifying novel factors in human disease, leading to improved patient care.

Section Chief: Elena Semina, PhD

Admin Leader: Wendy S. Brockman, MBA



The Developmental Biology Team

Patient Care: Novel findings in numerous human genes and clarified phenotypes on several human syndromes

Research: Developmental Biology has received continuous NIH support for various research projects.

Education: We provided lectures for MCW graduate programs including the new Master of Science in Genetic Counseling program, continued with postdoctoral training and NIH T32 training grant efforts.

Community: Members of the Division supported non-profit organizations during the holidays and participated in MCW's lunch program

EMERGENCY MEDICINE

We serve over 75,000 patients annually from Wisconsin and northern Illinois. Providers include 31 board certified faculty physicians, 19 advanced practice providers, and eight fellows. A team of research and administrative staff provide support to advance the section's goals in patient care, research, education, and community engagement.



Our new Emergency Department

FY23 Pride Points

- Innovative programs including suicide screening, influenza vaccination, point of care ultrasound and social determinants of health screening.
- Research infrastructure consists of membership in the Pediatric Emergency Care Applied Research Network (PECARN) for the last 20+ years, about \$2 million in research funding in FY23, and a health economist faculty member.
- Social Medicine and Advocacy Committee (SMAC) engaged in the community through book drives, meal handouts at neighborhood primary care clinics, providing clothing for patients in the ED, and building relationships with law enforcement.

Section Chief: Amy Drendel, DO, MS (*interim*)

Former Admin Leaders: Fouza Yusuf and Joan Nowak

APP Leader: Sandra Huitink, PAC

Patient Care: >76,000 ED visits



Research: 28 research projects currently underway



Education: 33 publications in the last FY



Community: 150 meals handed out/month



ENDOCRINOLOGY

The Endocrinology and Diabetes section has been growing to establish and expand interdisciplinary clinical programs including thyroid nodule/ thyroid cancer, Turner syndrome, polycystic ovarian syndrome, differences in sexual differentiation, amongst other ongoing programs.

FY23 Pride Points

- Along with endocrine programs, the section continues to improve upon care delivery models and education for children with diabetes including the REACH program.
- Leadership positions and presentations at multiple national endocrine societies by our faculty, nurse practitioners, and fellows

Section Chief: Pallavi Iyer, MD

Admin Leader: Erica Stuckert



Our Team

Patient Care: Successfully administered the first novel infusion therapy (Teplizumab) to delay onset of Type 1 diabetes

Research: 13 publications in the fiscal year

Education: Expansion of clinical endocrine fellowship and post-doctoral fellowship in the McGee Center

Community: Follow us @MCWPedsEndo on Instagram and X (Twitter)

GASTROENTEROLOGY, HEPATOLOGY & NUTRITION

Our team is comprised of 24 faculty, 5 APNP's, 6 fellows and multiple administrative, clinical and research team members, providing services at 8 CW locations. Our mission is to integrate high quality patient care and advocacy, state-of-the art technologies, innovative research, and fellowship training within a nationally recognized division that encompasses a diverse and inclusive group.

FY23 Pride Points

- First in the nation to use technology with disposable scopes in Transnasal Endoscopy
- 2023 Cystic Fibrosis Foundation fellowship training awards (2 fellow awardees)
- Established partnerships with local and regional societies such as Crohn's and Colitis Foundation to provide Physician, APNP and RN support for their annual summer camp, "Oasis"

Section Chief: Cara Mack, MD

Associate Division Chief: Ankur Chugh, MD

Admin Leader: Lisa Nielson



GI Faculty, Fellows and Staff coming together at the Annual NASPGHAN Meeting in 2022.

Patient Care: Over 20,000 outpatients visits per year, Top 25 ranking in USNWR.

Research: First in the nation to use technology with disposable scopes in Transnasal Endoscopy

Education: 2023 Cystic Fibrosis Foundation fellowship training awards (2 fellow awardees)

Community: Established partnerships with local and regional societies such as Crohn's and Colitis Foundation to provide Physician, APNP and RN support for their annual summer camp "Oasis."

GENERAL & COMMUNITY PEDIATRICS

We care for every aspect of a child's health and we provide resources that impact their health at home and at school.

FY23 Pride Points

- Established relationships with 4 Milwaukee Public Schools
- Partnered with CMG to launch First Community Health Fair to link families to community resources
- Converted Midtown Clinic to an all-academic faculty teaching environment to expand the primary care teaching mission for residents and medical students at MCW

Section Chief: Constance Gundacker, MD (*interim*)

Admin Leader: Stephanie Stroud



Midtown Clinic

Patient Care: CMG partnership to create research and education core team to enhance research and education in primary care

Research: Collaboration MCW Trauma Surgery team and Froedtert to begin a pediatric trauma and Quality of life clinic for children and adolescents in Milwaukee

Education: Welcomed 3 new faculty to the Division, all of whom have taken on leadership roles within the first year in resident and medical student education

Community: The team participated in 4 community events to support the educations of Milwaukee kids and families

GENETICS

The Genetics Program continues to expand its reach as a regional leader in diagnostics, treatment and research for children and adults with genetic disorders.



The Genetics Team on Rare Disease Day 2023.

FY23 Pride Points

- MCW's Master of Science in Genetic Counseling Program graduated the program's first class in May 2023.
- Established genetic counselor on-call service increasing timely access to genetics services that do not require a provider evaluation.
- Held philanthropic event raising \$280K for the Center for Undiagnosed and Rare Diseases.

Section Chief: Donald Basel, MD, FACMG

Admin Leader: Katie Coffelt, MHA

APP Leader: Stephanie Offord, MSN, APNP

Patient Care: Implemented core concepts of "Language of caring", have seen positive feedback on NRC surveys

Research: Several ongoing initiatives from Rare Disease to Clinical Trials

Education: The clinical team and patient experience is key for educating many learners, we are proud to be a fundamental part of the MSGC program and the inaugural graduating class

Community: Supported the Newborn Screen subcommittees, lobbied state legislators to increase budget to support the NBS work. Successfully advocated for new treatable diseases to be included in WI NBS.

GENOMIC PEDIATRICS

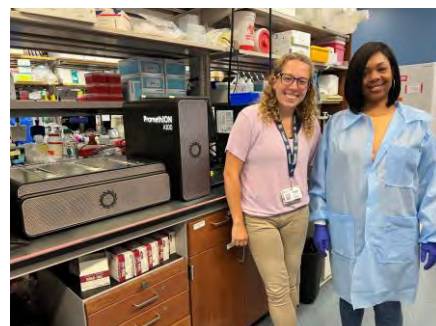
The Section of Genomics Pediatrics' mission is to capitalize, deliver and expand on the promise of genomics in pediatrics. Our section maintains two clinical laboratories serving Children's Wisconsin with testing for cytogenetics. Our NIH-funded laboratory focuses on the genetics underlying polygenic cardiovascular disease and drug toxicity. We pursue workflows that lead to the implementation of genomics in medicine.

FY23 Pride Points

- Bringing next-generation cytogenetics testing to Children's Wisconsin Genetics Clinic
- Continuous NIH funding since the Section's inception in 2007
- Evaluation and implementation of novel genome analysis methods for functional follow-up using human induced pluripotent stem cells

Section Chief: Ulrich Broeckel, MD

Admin Leader: Andrea Matter, MS



Recruitment and wetlab team for next generation cytogenetic test development using long range sequencing.

Patient Care:

Participation in multiple IRB studies focused on bringing next-generation cytogenetic technologies to clinic

Research: Over 100+ TB of sequencing data generated for NIH & clinical research

Education: Expanding our Team to support CSG-funded Structural Variation Initiative

Community: 7 Publications

HEMATOLOGY, ONCOLOGY & BONE MARROW TRANSPLANT

The Division of Hematology / Oncology / Bone Marrow Transplant provides treatment for infants, children, teens and young adults with blood disorders including cancer, non-malignant blood diseases, immunodeficiency states and bleeding disorders. We also are committed to expanding research and teaching efforts to enhance the national recognition and prominence of the program.



Our Teams

FY23 Pride Points

- World class research in sickle cell, hemophilia, and von Willebrand disease
- Robust clinical trial portfolio including innovative cell therapy, and investigator-initiated bone marrow transplant and oncology trials
- Groundbreaking new pediatric oncology clinics in cancer predisposition and targeted therapies Hosts many interdisciplinary comprehensive clinics involving many other specialties to serve our patient population

Section Chief: Veronica H. Flood, MD (*interim*)

Admin Leader: Ann Breunig, MEd

APP Leader: Lynnette Anderson, RN, MS, CPNP-PC

Patient Care: 224 IRB protocols, 122 active clinical trials

Research: 96 Publications, of which 14 had an impact factor greater than 25

Education: Over 80 learners hosted through Hematology/Oncology/BMT rotation

Community: The Sickle Cell team is planning to participate in a large community event next summer at the Fiserv Forum

HOSPITAL MEDICINE

Our Section consists of 50 faculty, 4 fellows, 11 APPs, and 6 administrative staff that practice across both campuses. Our mission and vision is to work in partnership with other specialties to provide the best and safest care for children while leading the nation in excellence and innovative care for the hospitalized pediatric patient.

FY23 Pride Points

- Six faculty promoted to Associate Professor of Pediatrics
- Multiple oral presentations at national conferences (PAS, APPD, and PHM)
- Two CRI grants and completion of multi-center implementation science funded by NIH

Section Chief: Jennifer Hadjiev, MD

Vice Section Chief: Heather Toth, MD

Associate Section Chief: Vanessa McFadden, MD, PhD

Admin Leader: Melissa Barber, MBA

APP Leader: Nicole Emlen, APNP



Our Pediatric Hospital Medicine family and the future docs of CSGI.

Patient Care: >6,000 admissions, >20,000 patient encounters, and cared for 92% of general pediatric admissions

Research: 34 publications in FY23 by our faculty, APPs, and fellows

Education: 5 faculty awarded teaching awards, 13 faculty with formal MCW teaching/leadership roles

Community: Created a Pediatric Anti-Racism Curriculum for our team

INFECTIOUS DISEASES

The ID team is dedicated to assist all Pediatric Services with infectious diseases expertise. Faculty also continue to grow the Infectious Diseases Outpatient Clinic, providing follow-up care after discharge from the hospital and evaluating new referrals from the community.



Peds ID welcomed the newest member to our family in 2023.

FY23 Pride Points

- Successfully recruited our first APP, Alicia Morales, NP. Alicia has been instrumental in supporting our new Transplant ID Program, the inpatient and outpatient clinical service.
- Anna Huppler, MD initiated the Transplant ID Program at Children's Wisconsin, which is expected to grow in the coming years
- Kelly Graff, MD was awarded a Global Health Research Seed Project Funding from MCW's Office of Global Health for her project Infection Prevention Intervention in a low-resource NICU in Guatemala to reduce transmission of antimicrobial resistant bloodstream infections.

Section Chief: Ravit Boger, MD

Former Admin Leader: Portlynne Joseph

Patient Care: 704 new patient consults; 1,715 follow-up consults; 433 outpatient clinic visits

Research: 21 scholarly publications across 9 faculty members

Education: Inaugural fellow Britt Player, MD, Graduated and has joined the ID Faculty; we are currently training a 2nd year fellow and a 1st year fellow will join in early fall 2023.

Community: ID Faculty have been key advisors during the COVID-19 pandemic, contributing to Children's Wisconsin social media efforts, as well as television, radio, and print interviews.

MEDICAL EDUCATION

In the ever-advancing medical field, it is our mission to remain at the forefront of innovation while respecting the importance of securing a strong foundation. We work hard to foster the growth and development of our trainees by providing them with an exceptional, well-rounded educational experience while constantly re-examining not only what we teach, but how we teach it.

FY23 Pride Points

- Hosted 1st annual Pediatric Medical Education Staff Retreat that promoted staff professional development, team engagement, connection and wellness.
- 100% of positions for all residency programs and 86% of all fellowship positions were filled during the Match (NRMP).
- The DOP Joint Fellowship DEI Committee continues to strengthen recruitment efforts by communicating opportunities within our training programs to prospective candidates.

Section Chief: Tara Petersen, MD, MSED

Admin Leader: Cathy Brummer, MSM, C-TAGME



Patient Care: Identifying opportunities for housestaff to participate in moonlighting activities throughout the year to help address patient volume and complement medical training.

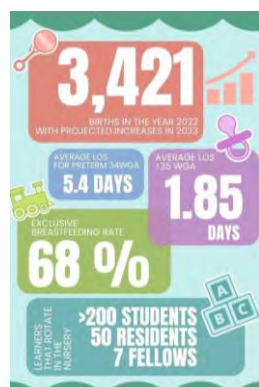
Research: Provided over 50 Scholarly Activity and Academic Enrichment (SAE) awards to learners in support of presenting their scholarly projects on the national/international stage.

Education: The Pediatric Simulation Program hosted 547 events, consisting of 1,395 event hours, and reaching 3,246 participants from 13 states during the 2022-23 academic year.

Community: The Community Pediatrics Training Initiative continues to expand and engage new parent participants and organizations who teach pediatric residents and rotating medical students directly in the community.

NEONATOLOGY

Our Neonatology section in DOP and CSG has 33 faculty members, including 25 Neonatologists, 5 pediatricians and 3 basic science faculty members. Our Neonatology section oversees the clinical program on Children's Wisconsin and MCW campus in Milwaukee, as well as community hospital based NICUs at Froedtert Menomonee Falls and West bend and at CW-Fox Valley in Neenah, WI.



FY23 Pride Points

- At Children's Wisconsin in Milwaukee, our section covers a 72-bed, all private room, level-IV NICU adjacent to the perinatal center of Froedtert Memorial Hospital with 3,600 deliveries annually specializing in high-risk deliveries.
- The NICU is the largest and provides the highest level of care in the state of Wisconsin and receives referrals from other level 1-3 nurseries in WI and regionally from northern IL and upper peninsula of MI.
- The NICU is also staffed by >40 neonatal advance practice providers on 24/7 basis.

Section Chief: Ganesh Konduri, MD

Admin Leader: Kerry Solum, MBA

Patient Care: Developed two clinics to provide high-risk infant follow up care: HOPE (Healthy Outcomes Post-ICU Engagement) and DREAM (Developmentally Ready: Engagement and Achievement of Milestones)

Research: Our research program is multidisciplinary and consists of bench research and clinical research with external funding of over \$1.5 million annually.

Education: The fellowship program has 9 fellows with 3 each year and matched all positions competitively from a national pool of candidates every year since NRMP has been established for Neonatology fellowship programs.

Community: The fetal concerns Center, jointly staffed by MFM and CSG specialists at CW, including Neonatology faculty provides over 1,000 consultations annually.

NEPHROLOGY

Provides comprehensive pediatric kidney care including management of general kidney disease, hypertension, kidney transplantation, and acute & chronic dialysis. Our expert interdisciplinary team provides wholistic, compassionate care to children & families. We engage in research to advance care through scientific discovery and medical education for all learners.

FY23 Pride Points

- US News and World Report 2023 top 50 ranking
- Successful recruitment of 4 new faculty

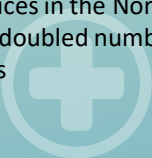
Section Chief: Jennifer Jetton, MD

Admin Leader: Erica Stuckert



Our Team

Patient Care: Expanded services in the Northeast and doubled number of visits

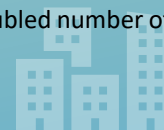


Research: 15 new publications



Education: “Conversations with Claire” – video series providing insight into organ transplantation from a child’s perspective. Project led by Shelley Chapman, APNP

Community: Expanded services in the Northeast and doubled number of visits



PEDIATRIC PSYCHOLOGY & DEVELOPMENTAL MEDICINE

Pediatric Psychology & Developmental Medicine provides supportive and evaluative psychological and developmental care. Providers practice at the Brookfield Child Development Center and are imbedded in specialty clinics and inpatient units.



New Pediatric Psychology Residents and Faculty Supervisors in new Health Psychology Clinic.

FY23 Pride Points

- Our Pediatric Psychology Training Program received \$1.5 million in State funding to develop a new Pediatric Psychology Residency and new fellowships.
- Our new Heath Psychology clinic, including state-of-the-art residency training space, opened on July 1, 2023.
- Michael J. Gaffrey, PhD joined our Division on July 1, 2023 as the first Yabuki Chair of Mental & Behavioral Health Research

Section Chief & Medical Director: Cheryl L. Brosig, PhD

Associate Section Chief: Elizabeth Fischer, PhD

Autism Program Director: Daniel Schulteis, MD,

Admin Leader: Ann Breunig, MEd

Patient Care: Added 10 new faculty and completed 13,813 patient visits in 2022



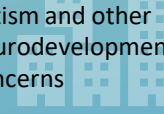
Research: Added two new research faculty



Education: Educating 10 psychology practicum students, 4 residents, and 3 fellows



Community: Developed an inclusive summer camp experience for kids with autism and other neurodevelopmental concerns



PULMONARY & SLEEP MEDICINE

Division provides pulmonary and sleep services throughout Southeast Wisconsin/Fox Valley. Consistently ranks in US News and World Reports Best Children's Hospitals annual report.

FY23 Pride Points

- Selected as CF Therapeutics Development Network (TDN) Regional Cooperative Lead Site for Midwest-Chicago/Wisconsin region. (Nick Antos, MD)
- Kristin Kruschel, APN accepted into Leadership and Education APP fellowship through CF Foundation.
- Louella Amos, MD served as Task Force Chair for American Academy of Sleep Medicine position statement regarding age/weight considerations for pediatric CPAP.



Our annual Bowling Party with providers, staff, and families resumed in 2023.

Section Chief: Lynn A. D'Andrea, MD

Admin Leader: Andrew Webb

Former Admin Leaders: Theresa Kump/Joan Nowak

Patient Care: 7,430
Ambulatory visits; 1,419
Sleep Studies; 213
bronchoscopies

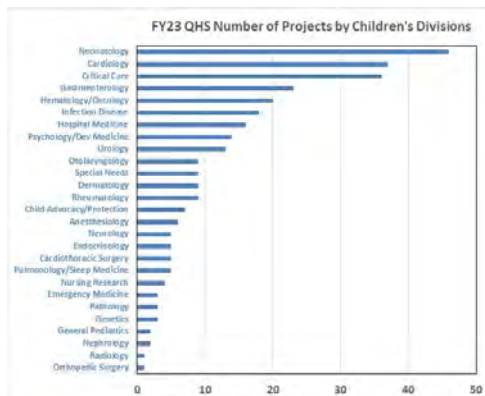
Research: Member CF
Foundation TDN since
2009; >\$4.7M research
funding to-date

Education: Pediatric
Pulmonary fellowship;
participate in MCW Sleep
fellowship

Community:
Tracheostomy/Home ventilator
program addressing scarcity of
community resources:
enhancing home discharge
education; developing digital
educational resources; and
advocating at state level

QUANTITATIVE HEALTH SCIENCES

We are a group of expert statisticians with a mission to provide scientifically valid, efficient, and dependable statistical collaboration to children's health research.



FY23 Pride Points

- Collaborated on over 300 projects, with about 25% of projects being either grant funded or for a grant submission. Coauthored 45 publications.
- Provided data management services including REDCap development, maintenance, and training.
- Collaborate with researchers throughout the whole project cycle, from study design to results publication.

Section Chief: Ke Yan, PhD (*interim*)

Admin Leader: Wendy S. Brockman, MBA

Patient Care: We have collaborated on many QI studies which have improved patient care.

Research: We provide support to a range of research studies, including basic science, clinical, epidemiological, and community studies.

Education: Our faculty mentor and educate students, residents and fellows by attending thesis committees, journal clubs and SOCs.

Community: We have engaged in community studies, including projects addressing health disparities.

RHEUMATOLOGY

The Division of Rheumatology in the Department of Pediatrics cares for children and adolescents with various rheumatic diseases, including arthritis, lupus, inflammatory myopathies, vasculitis, and scleroderma. Our clinical consultation service helps diagnose children with musculoskeletal manifestations of other diseases, as well. Along with patient care activities, we also have a solid research program and thriving educational programs.

FY23 Pride Points

- Active translational and clinical research programs supported by the NIH, the Cure JM Foundation, the Children's Research Institute, the AHW endowment, and several private sector entities.
- Consistently receive high scores on patient satisfaction surveys and were recognized as one of five teams with most improved NPS scores.
- In academic year 2023, we had a combined total of 1,726 patient visits at our three clinic locations.



Our Team

Section Chief: Calvin B. Williams, MD, PhD

Admin Leader: Wendy S. Brockman, MBA

Patient Care: Our faculty and staff provide clinical services at three sites in Wisconsin: CW Main campus in Milwaukee, the Fox Valley, and Kenosha.

Research: All of our faculty have active research projects, ranging from bench research, clinical trials, quality improvement, and education.

Education: Our division works with learners at all levels and our educational activities/experiences are very highly rated by the learners who participate in them.

Community: Our faculty and staff play active roles in an annual summer camp specifically geared for kids with arthritis: Camp MASH (Make Arthritis Stop Hurting).