

Precision Irradiation Core

Location: TBRC suite E and MFRB 1003 (targeted small animal radiotherapy)

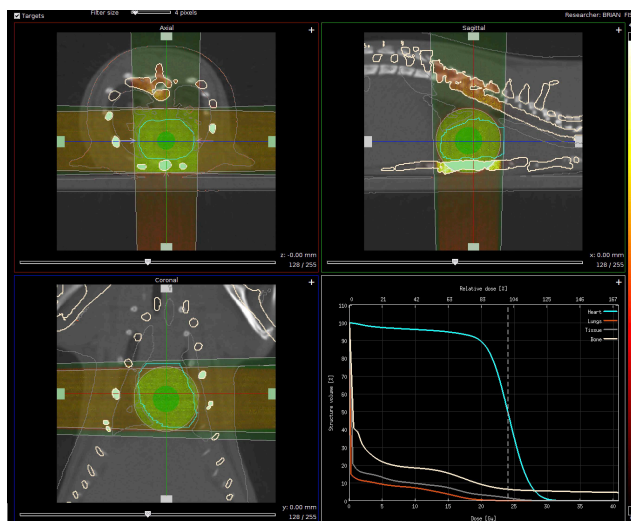
P.I. Dr. Heather Himburg

Primary Contact:

- Brian Fish, Director
(414) 955-4673
bfish@mcw.edu

Other Contact:

- Tracy Gasperetti
(414) 955-4686
tgasperetti@mcw.edu



Multibeam targeted heart irradiation with dose volume histogram

Overview

The Irradiation Core houses three X-Ray instruments capable of irradiating both small and large animals. The core can perform whole body irradiations as well as targeted irradiation of small volumes, tumors, and cells at various dose rates. The Irradiation Core is available on a fee-for-service basis.

The core also breeds, houses and sells the only WAG/Rij rats strain in the United States.

| Equipment/Software | Accessibility |
|---|--|
| Small animal radiotherapy unit (SmART x-ray machine, PXI) small field targeted radiotherapy with CT imaging and full treatment planning | Core technicians use on behalf of investigator |
| X-RAD 320 kVp X-ray unit large field irradiations | Core technicians use on behalf of investigator |
| Pantak 320 kVp X-ray unit | Core technicians use on behalf of investigator |

Hours: Monday - Friday 7:30 am-3:30 pm

Common users of the facility: Biophysics; Medicine; Microbiology & Molecular Genetics; Pediatrics; Physiology; Pharmacology & Toxicology; Radiation Oncology; Surgery; Biomedical Engineering

Rate: please contact us