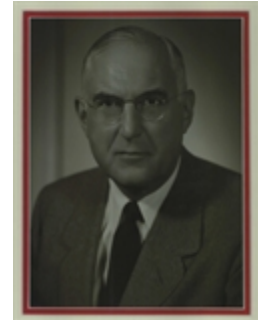


The Carl W. Eberbach Memorial Lectureship

Dr. Carl Eberbach arrived in Milwaukee in 1928, having moved here from his ancestral home in Ann Arbor, Michigan. At the University of Michigan Medical School he had been an Associate Professor of Surgery and was Acting Dean of the Medical School under Dr. Hugh Cabot, one of the pioneers in Urology in this country.



Dr. Eberbach's early beginnings were in the field of Urology, in which he was a substantial contributor to the medical literature in the 1920's. He wrote on many aspects of genitourinary surgery, especially in the field of congenital anomalies. His monograph on renal tuberculosis was considered an outstanding work. His later years in Ann Arbor, however, were in the field of General Surgery, and it was in this capacity that he took up his new work in Milwaukee at the age of 37.

His leaning toward academic medicine was strong, and he maintained a vital interest in our medical school throughout his professional life in Milwaukee. He was Chair of the Department of Surgery for eight years before the arrival of Dr. Edwin Ellison in 1958, and was instrumental in bringing Dr. Ellison here from Ohio State University.

Dr. Eberbach regarded himself as a clinical surgeon, and his self-appraisal is reflected in his writings, principally in the fields of biliary tract surgery and in the management of breast cancer.

Date	Visiting Professor	Institution/Title
2017	Wayne A. I. Frederick, MD, MBA (video)	Howard University President Professor of Surgery
2016	David B. Hoyt, MD (video)	Executive Director American College of Surgeons Chicago, IL Emeritus Professor of Surgery University of California, Irvine
2015	Michael Sarr, MD (video)	Emeritus Professor of Surgery Department of Surgery Mayo Clinic
2014	John L. Cameron, MD	The Alfred Blalock Distinguished Service Professor The Johns Hopkins University School of Medicine
2013	E. Christopher Ellison, MD (video)	Robert M. Zollinger Endowed Chair Associate Vice President for Health Sciences Vice Dean of Clinical Affairs, College of Medicine CEO, Faculty Group Practice The Ohio State University
2012	Sean J. Mulvihill, MD	Associate Vice President for Clinical Affairs Chief Executive Officer University of Utah Medical Group
2011	Kurt D. Newman, MD	Senior Vice President The Joseph E. Robert, Jr. Center for Surgical Care

		Surgeon-in-Chief, Children's National Medical Center Vice President, The Sheikh Zayed Institute for Pediatric Surgical Innovation Children's National Medical Center Professor of Surgery and Pediatrics George Washington University School of Medicine
2010	Samuel A. Wells, Jr., MD	National Cancer Institute Executive Director International Thyroid Oncology Program
2009	Jeffrey L. Ponsky, MD	Case Western Reserve University School of Medicine Oliver H. Payne Professor and Chair Department of Surgery
2008	Richard H. Bell, Jr., MD	American Board of Surgery Assistant Executive Director
2007	Scott A. Gruber, MD, PhD	Wayne State University School of Medicine Professor and Chief, Department of Surgery Harper University Hospital Director, Organ Transplant Program
2006	Christopher R. McHenry, MD	MetroHealth Medical Center Case Western Reserve University School of Medicine Vice-Chair, Department of Surgery Director, Division of General Surgery
2005	Nancy L. Ascher, MD, PhD	University of California - San Francisco Professor and Chair of Surgery
2004	Layton F. Rikkers, MD	University of Wisconsin - Madison A.R. Curreri Professor and Chair Department of Surgery
2003	Julie A. Freischlag, MD	The Johns Hopkins University School of Medicine The William Stewart Halsted Professor and Chair Department of Surgery
2002	Michael J. Zinner, MD	Brigham and Women's Hospital Moseley Professor and Chair Department of Surgery
2001	Lazar J. Greenfield, MD	University of Michigan Frederick A. Coller Distinguished Professor and Chair, Department of Surgery
2000	J. Michael Henderson, MD	The Cleveland Clinic Foundation Professor and Chair Department of General Surgery
1999	Tom R. DeMeester, MD	University of Southern California Professor and Chair Department of Surgery
1998	Larry C. Carey, MD	University of South Florida Richard G. Connar Professor Chair, Department of Surgery
1997	David Nahrwold, MD	

1996	Jack Pickleman, MD	
1995	Don Fry, MD	
1994	Basil Pruitt, MD	
1993	George Sheldon, MD	
1992	J. Bradley Aust, MD, PhD	
1991	Sam Wells, MD	
1990	John Mannick, MD	
1989	Jay Grosfeld, MD	
1988	Norman Rich, MD	
1987	Josef Fischer, MD	
1986	John Sawyers, MD	
1985	George Jordan, MD	
1984	Bernard Jaffe, MD	
1983	Ben Eiseman, MD	
1982	Gilbert Campbell, MD	
1981	Hiram Polk, MD	
1980	Oliver Beahrs, MD	
1979	John Jesseph, MD	
1978	Ronald Malt, MD	