

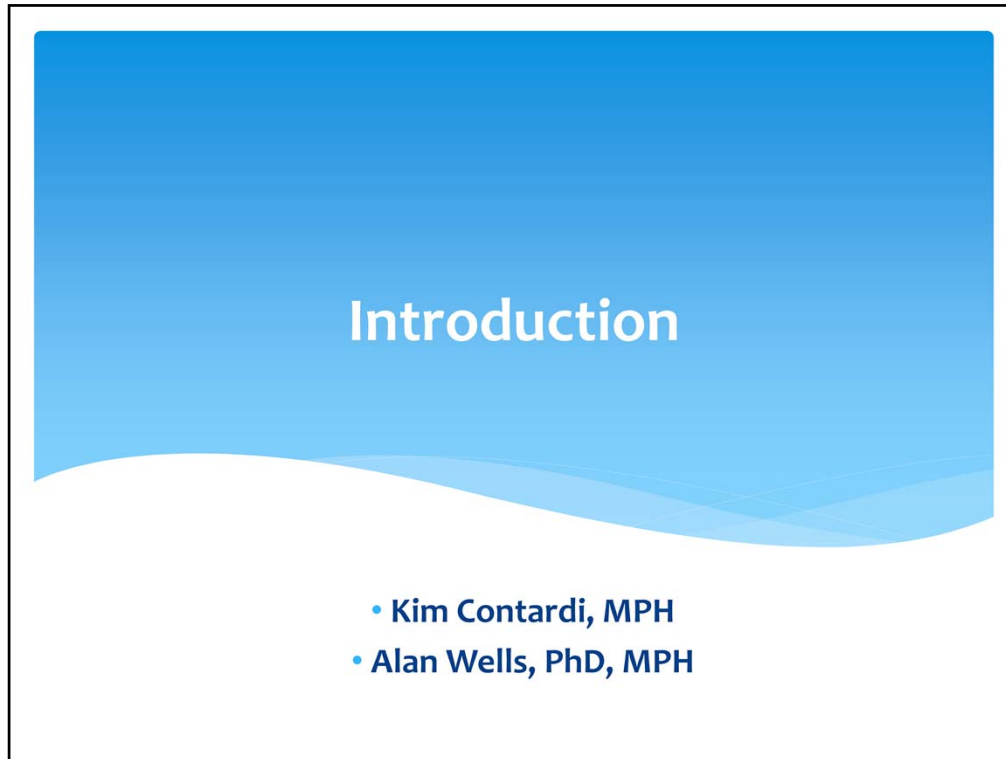
Welcome to 18279 MPH Field Placement Preparation. This presentation is the first of the series, and it will provide you with an introduction to the course.

Overview of Presentation

- * Introductions
- * Field Placement
 - ☐ Guest Lecturer
 - ☐ General Information
- * Overview of FP Preparation course
 - ☐ Purpose & objectives
 - ☐ Course schedule
 - ☐ Expectations of course



In this presentation, I will introduce you to Alan Wells, guest lecturer, and provide you with his contact information. I will also inform you about the field placement course, in general. Finally, I will provide an overview of the Field Placement Preparation course and discuss the purpose and objectives of the course as well as the course schedule and expectations.



Before I discuss the course, let me first introduce you to the individuals with whom you will work for the first half of the course.

Guest Lecturer – Alan Wells, PhD, MPH

- * Adjunct Professor at MCW
- * Assistant Prof at Florida International Univ
- * Earned MPH and PhD at the University of Texas School of Public Health
- * Content Expert
 - * Community-academic partnerships
 - * Human subject research
 - * Ethical issues in public health
 - * Project development



Alan ↴



Alan Wells will act as the guest lecturer for this course. He is an adjunct professor at the Medical College, but his full-time academic appointment is actually at Florida International University. He is an Assistant Professor in the Department of Humanities, Health, and Society at the Herbert Wertheim College of Medicine. Alan earned both his MPH and PhD at the University of Texas School of Public Health. For his master's thesis, he developed a protocol for qualitative needs assessment of heterosexual couples with HIV in Mumbai, India.

In the Preparation course, Alan will provide content expertise in various areas, including reciprocal community-academic partnerships, human subject research, ethical issues related to public health projects and research, and field placement project development.

Contact Information

- * Kim Contardi, MPH
 - * Email: kcontardi@mcw.edu
 - * Phone: 414-955-4806
 - * Location: H2550
Health Research Center
- * Alan Wells, PhD, MPH
 - * Email: alwells@fiu.edu

Alan and I are available for questions or concerns anytime. Please feel free to send us an email or give me a call. If you would like to meet, I am available for scheduled appointments. Additionally, I am often available for unplanned meetings during normal business hours, so feel free to stop by. My workspace is located in Suite H2400, Room H2550 of the Health Research Center at the Medical College of Wisconsin.

Please keep in mind, coordinating field placements is a huge part of my role with the MPH program, so feel free to contact me at any time. While I am not here to set up your field placement for you, I am here to facilitate the process. Please keep me in the loop, and let me know what I can do to help you.



Before I discuss the Field Placement Preparation course, I will provide some general information about the field placement.

What is the Field Placement?

- * Opportunity
 - * Apply knowledge & skills
 - * Gain professional work experience
- * Work with organization that supports public health
- * Complete project organization identifies as a need
- * Requirement of MPH program
 - * Requirement of CEPH



The field placement is an opportunity for you to apply the knowledge and skills you have gained during the MPH program and gain professional experience in a public health work environment. You will work with an organization that supports public health on a project that they have identified as a need. That last part is very important. The organization needs to say that the project is needed. You should not develop a project idea and then try to find an organization that will allow you to implement it. Instead, you should communicate with the organization about their needs and cooperatively develop a project that will benefit the organization and is of interest to you.

The field placement is also a requirement of the MPH program. Our accrediting agency, the Council on Education for Public Health or CEPH, states, “all professional degree students must develop skills in basic public health concepts and demonstrate the application of these concepts through a practice experience that is relevant to the students’ areas of specialization.”

Field Placement Team Members

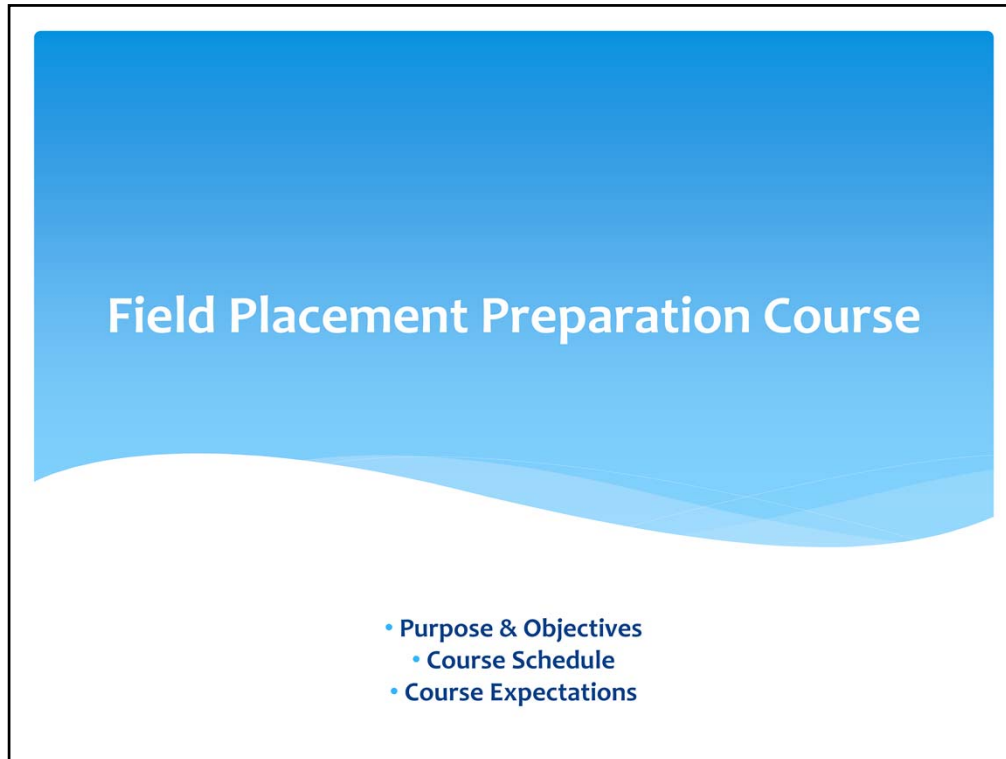
□ 4 people involved in each Field Placement

- Student – you
- Site Preceptor
 - Mentor at the site
 - You will recruit; I will advise
- Faculty Advisor
 - Faculty member at MCW
 - Recruited by me/Terry B.
- Program Manager – Kim Contardi



Each field placement is accomplished by a team, and there are four members on that team. (You do not need to worry about these roles too much now, but you will hear me refer to these individuals, so I want to explain who each person is.)

1. You, clearly, will fulfill the role of the student.
2. The Site Preceptor is a person at the organization who will act as your mentor. When you meet with a person or people at the organization to discuss potential projects, you will mention that you need an onsite mentor or supervisor. The organization will identify someone, and I will work with that person to make sure he or she understands and accepts the responsibilities of this role. (Just so you know, I will provide more information about this process when we discuss how to identify and contact potential field placement sites.)
3. The Faculty Advisor is a faculty member at the Medical College of Wisconsin, and I will work with our program director, Terry Brandenburg, to recruit someone specific to your project. Once I receive the paragraph description of your proposed project, we will work to find someone that has expertise in the area of your project.
4. The last member of the team is me, the Program Manager and Field Placement Coordinator. As I have mentioned before, I will work very closely with you, your Site Preceptor, and your Faculty Advisor throughout your field placement.



Now that we know how important the field placement is, I will discuss how the Field Placement Preparation course fits in.

Purpose of FP Preparation Course

- * Purpose
 - * Provide foundation for FP
- * Objectives
 - * Identify interests & goals
 - * Apply principles of human subject research
 - * Assess ethical implications of project
 - * Describe aspects of community-academic partnerships
 - * Develop field placement project and proposal

The purpose of this course is to provide the foundation and preparation for your field placement project. Previously, students had to complete all of these planning steps, but they did not get credit for them and it was not as facilitated as a course. We have designed this guided course to provide a better experience for you, the students, and your site preceptors. To do that, this course will accomplish a number of objectives. They are listed in detail in the syllabus, but I have not written them out in their entirety on this slide.

To summarize, this course will give you the opportunity to identify your interests and determine your goals. You need to carefully consider, what do you want to get out of your field placement? Once you figure that out, gear your field placement towards those goals. This course will also provide background information and concepts regarding why you have to do what you have to do. Better understanding of the principles of human subject research, the ethical implications of public health projects, and the importance of reciprocity in community-academic partnerships will help you develop a better field placement project. Finally, this course will help you develop a worthwhile and feasible project with a community organization.

FP Preparation Course Schedule

- * Background Information & Skill Building
 - * Public health careers
 - * Submit preliminary documents
 - * Human subject research, ethics, IRB
 - * Submit CITI completion report
- * Project Development
 - * Identify & contact potential sites
 - * Submit contact info
 - * Develop proposed project
 - * Submit paragraph description



The Field Placement Preparation course is basically made up of four sections: background information and skill building, project development, proposal development, and preparation for implementation.

For the first few weeks, Alan and I will provide you with background information to build your skills to prepare you for field placement. We will provide you with information on public health careers, human subjects research, ethical issues in public health, and IRB review processes for MPH students. During this time, you will be expected to complete preliminary planning documents, including a student interest form, resume or CV, competency self assessment, and CITI training in the protection of human research subjects.

After the first few weeks of preparation, you will identify organizations with which you would like to work, and you will start contacting them. During your discussions, you will brainstorm and begin to develop your potential field placement project. During this section of the course, you will first submit contact information for potential sites. Then you will submit contact information for the site you have chosen as well as the person who has agreed to act as your site preceptor, and you will submit a proposed project description.

Course Schedule (continued)

- * Proposal Development
 - * Develop proposal with preceptor, advisor & me
 - * Submit multiple drafts of proposal form
- * Implementing & Completing FP
 - * Next steps (after FP Prep is over)
- * Syllabus in D2L

The third section consists of the iterative process of developing your proposal. In conjunction with your site preceptor, faculty advisor, and me, you will develop and revise your proposal until it is approved by each team member. For this part of the course, you will submit drafts of your proposal several times.

Once your proposal is complete, your major responsibilities are over because there are no assignments during the final portion of the course. At that time, I will provide you with important information about the implementation and successful completion of your field placement.


I know I have gone through this course schedule very quickly. I will provide more detail as we move through the weeks, and information is provided in the Course Syllabus, which is available in D2L.

Expectations of FP Prep Course

- * Satisfactory / Unsatisfactory scale
 - * Satisfactory = complete assignments on time
 - * Unsatisfactory = do not complete assignments
- * Assignments
 - * 25% Planning Documents
 - * Student Interest Form, Resume, Competency Self Assessment
 - * CITI Certification Completion Report
 - * Project Description & Preceptor Contact Info
 - * 75% Proposal
 - * Iterative process → multiple drafts

This course is graded on a satisfactory / unsatisfactory scale. If you successfully complete assignments on time, you will earn a grade of satisfactory. If you do not complete assignments in a timely fashion, then you will earn a grade of unsatisfactory and be required to repeat this course. During this course, it is essential that you stay on time and on task. Developing a field placement project is a group effort, and the other members of your team – your site preceptor, faculty advisor, and me - are counting on you to do your part.

There are several assignments you must complete for this course. 25% of your grade will be based off of the planning documents you submit. The first submission will consist of your student interest form, resume or CV, and competency self assessment. The second submission will incorporate your CITI certification in the protection of human research subjects completion form, and the third submission will consist of a paragraph description of your proposed project as well as contact information for your potential site preceptor. The major portion of your grade, 75%, will be based off of your proposal. Developing a worthwhile and meaningful proposal is an iterative process. You will work on this document over several weeks, and – as we have discussed – you will submit multiple drafts to your site preceptor, faculty advisor, and me.



Questions?

Contact: Kim Contardi
Phone: 414-955-4806
Email: kcontardi@mcw.edu

Once again, welcome to 18279 MPH Field Placement Preparation. If you have any questions or concerns, do not hesitate to contact me.