

# AMX Panel

## MCW Milwaukee

### Board Room



This Logo Page is the initial display when the AMX panel is not active. To start the system, touch the panel. During activation, the audio system is powered up and the touch panel display changes to the Main Page. When the system is off, it reverts back to the Logo Page.

## Main Page

The **Main Page** of the AMX panel is where every aspect of the system is controlled.



	Icon	Name	Function
1		Help	Touch to see the <b>Help</b> screen.
2		Volume - Low	Touch to lower the podium/room volume levels.
3		Volume - Mute	Touch and the button will flash <b>red</b> indicating the volume is muted. When touched again, it will unmute the volume.
4		Volume - High	Touch to raise the podium/room volume levels.
5		Projector	Once a source--like <b>PC Tower</b> --is selected, touch the <b>Send to Projector</b> button to send that source to the projector.
6		Shutdown System	Touch to turn off the system and revert to the Logo Page.

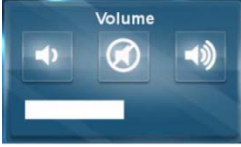
## Help



The **Help** button on the Main page will take you to the Help screen.

## Volume

The **Volume** of the audio system is controlled in the upper left of the screen.



The **Volume Down** button lowers volume (shortens the white indicator bar).

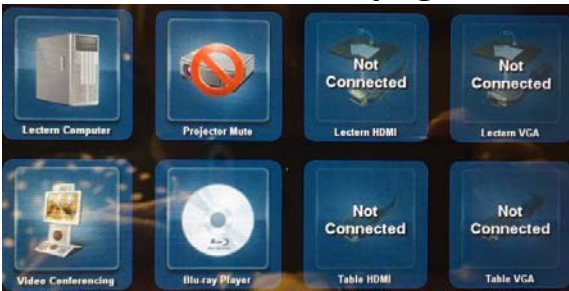


The **Volume Mute** button mutes volume; changes to **red** to indicate the volume is muted. When pressed again, it will unmute volume.



The **Volume Up** button raises volume (lengthens the white indicator bar).

## Source Selection Subpage



The Source Selection subpage is in the middle of the panel. Touch a source to send it to the projector. Touching a specific source will highlight it and bring it to the front anchor position.

### SOURCE NOTES

- If a source is not powered on, it will display **Check Power** (Document Camera).
- If a source is not connected, it will display **Not Connected** (Portable Device VGA).

### Display Button

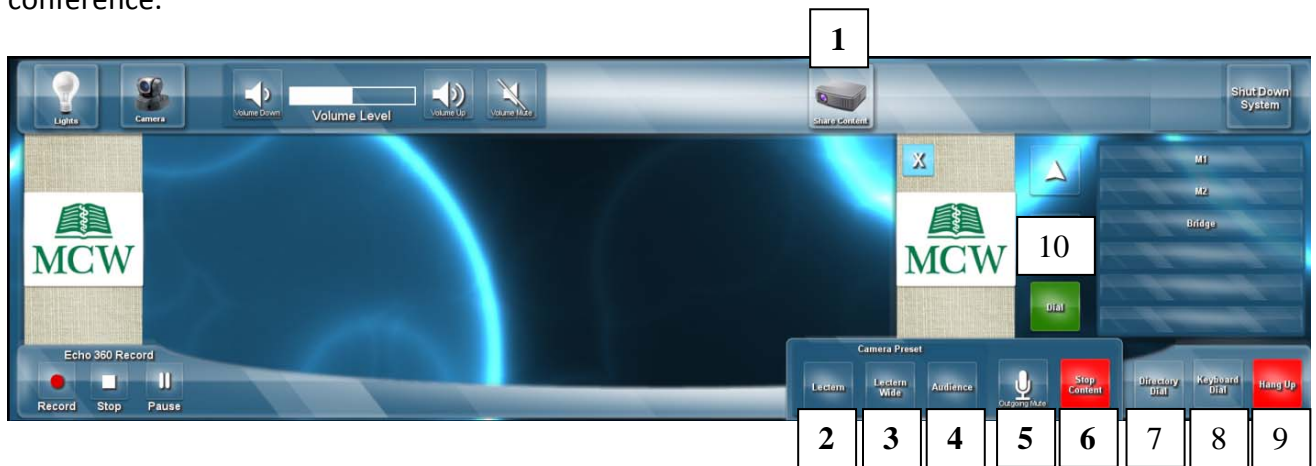


Once a source is selected, press **Send to Projector** icon to send it to the corresponding projectors.  
**Echo Record** – used to start, stop or pause the automatic ECHO360 recording.

 Record - starts recording	 Stop - stops recording	 Pause - pauses recording
<b>Record</b>	<b>Stop</b>	<b>Pause</b>

# Multidirectional Digital Page

The **Multidirectional Digital Page** of the AMX panel is displayed after successfully connecting to a video conference.



	Icon	Name	Function
1		Share Content	Touch to share content with the far location. Note: Only appears after successful video conference connection.
2		Lectern	Touch to change camera zone to a view of the lectern area.
3		Lectern Wide	Touch to change camera zone to a wider view of the lectern area.
4		Audience	Touch to view the far location audience on the screen.
5		Outgoing Mute	Touch to mute all microphones in the near location. Note: Audio from the far location will still be heard.
6		Stop Content	Touch to stop content delivery to the far location.
7		Directory Dial	Touch to activate an online directory prior to dialing into a video conference.
8		Keyboard Dial	Touch to activate an online keyboard prior to dialing into a video conference.
9		Hang Up	Touch to hang up or disconnect from a video conference.
10		Dial	Touch to dial and connect to a video conference. Note: Appears after pressing the <b>Directory Dial</b> button.

## Share Content



The **Share Content** button will share content from the near location selected source to the far location.

Touch a source (i.e., Lectern Computer, etc.) from the middle of the AMX panel and touch the **Share Content** button.



## Stop Content



The **Stop Content** button will stop the delivery of content from the near location to the far location.

## Camera Preset

The **Camera Preset** buttons (Lectern, Wide Lectern and Audience) control the camera zones in the far location.

Button	Name	Zone	Image
	<b>Lectern</b>	Lectern area.	
	<b>Lectern Wide</b>	Wider view of the lectern area (i.e., patient interview speaker panel, etc.).	
	<b>Audience</b>	Audience at the local location.	

## Dial and Hang Up



The Dial and Hang up functions are located in the lower right of the screen and are used to initiate (Directory Dial and Keyboard Dial) and end (Hang Up) a video conference call.

### Directory Dial



The **Directory Dial** button will activate a subpage on the right side of the screen.

To initiate a call:

1. Touch **Directory Dial**.
2. Select the **desired location** (M1 Class, M2 Class, etc.)
3. Touch the green **Dial**.



### Keyboard Dial



The **Keyboard Dial** button is an advanced video conference dialing feature via the keyboard. If you need further assistance with this feature, contact **Media Services** at [mediaservices@mcw.edu](mailto:mediaservices@mcw.edu) or (414) 955-4357, option 2 or consult the instruction sheet in the room.

### Hang Up



The **Hang Up** button will disconnect the video conference. Note: After hanging up, the Camera Preset buttons will disappear from the AMX Panel.



## Source Selection Subpage



The Source Selection subpage is in the middle of the panel. Touch a source to send it to the projector. Touching a specific source will highlight it and bring it to the front anchor position.

### SOURCE NOTES

- If a source is not powered on, it will display **Check Power** (Document Camera).
- If a source is not connected, it will display **Not Connected** (Portable Device VGA).

### Display Button









Once a source is selected, press the **Send to Projector** button to send it to the corresponding projector.

**Echo Record** – used to start, stop or pause the automatic ECHO360 recording.

 Record - starts recording	 Stop - stops recording	 Pause - pauses recording
<b>Record</b>	<b>Stop</b>	<b>Pause</b>

## Sources

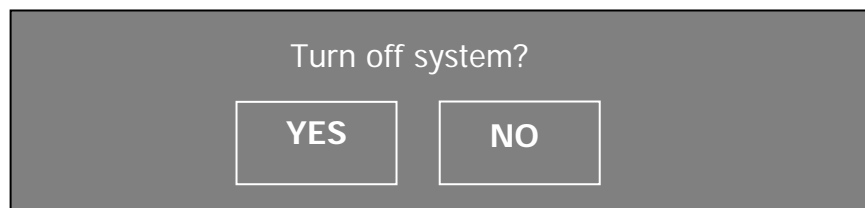
The following are sources that appear on the AMX panel:

Icon	Source
	Appears for both the Lectern <b>VGA</b> connection and the <b>Lectern HDMI</b> connections. Both would be used for a laptop or iPad. Note: The HDMI connector carries the audio along with the video.
	Lectern Computer The lectern computer is located in the bottom of the lectern cabinet.
	Portable Device (VGA or HDMI) Indicates a laptop is connected and ready to display.
	Blu-Ray Player Indicates that the Blu-Ray player is connected and ready to display.
	Video Conference Conferences one location (i.e., MCW Milwaukee Discovery Classroom) to another (i.e., MCW-Green Bay - St. Norbert College, MCW-Central WI).
	Display Logo Use to display between presentation changes.

## Shutdown System



The **Shutdown System** button on the Main page will turn off the AMX panel and any of sources currently activated.



After pressing the option **YES**, the system will countdown 90 seconds and shut down.

